

DBC1 (Phospho Thr454) Rabbit pAb

CatalogNo: YP1312 Orthogonal Validated 

Key Features

Host Species

- Rabbit

Reactivity

- Human, Mouse, Rat

Applications

- WB

MW

- 105kD (Observed)

Isotype

- IgG

Storage

Storage* -15°C to -25°C/1 year (Do not lower than -25°C)

Formulation Liquid in PBS containing 50% glycerol, 0.5% BSA and 0.02% sodium azide.

Recommended Dilution Ratios

WB 1:1000-2000

Basic Information

Clonality Polyclonal

Immunogen Information

Immunogen Synthesized phospho peptide around human DBC1 (Thr454)

Specificity This antibody detects endogenous levels of Human DBC1 (phospho-Thr454)

Target Information

Gene name KIAA1967 DBC1

Protein Name DBC1 (Thr454)

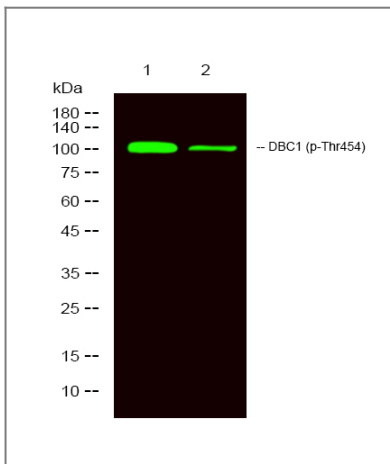
Organism	Gene ID	UniProt ID
Human	57805;	Q8N163;
Mouse	219158;	Q8VDP4;

Cellular Localization Nucleus . Cytoplasm . Cytoplasm, cytoskeleton, spindle . Recruited to chromatin, post-UV irradiation. Sequestered to the cytoplasm in the presence of MCC. Translocated to the cytoplasm during UV-induced apoptosis. .

Tissue specificity Expressed in gastric carcinoma tissue and the expression gradually increases with the progression of the carcinoma (at protein level). Expressed ubiquitously in normal tissues. Expressed in 84 to 100% of neoplastic breast, lung, and colon tissues.

Function tissue specificity:Expressed ubiquitously in normal tissues. Expressed in 84 to 100% of neoplastic breast, lung, and colon tissues.,

Validation Data



Western Blot analysis of 1 MCF-7 treated with LPS, 2 MCF7, using primary antibody at 1:1000 dilution. Secondary antibody(catalog#:RS23920) was diluted at 1:10000

Contact information

Orders: order@immunoway.com
Support: tech@immunoway.com
Telephone: 877-594-3616 (Toll Free), 408-747-0185
Website: <http://www.immunoway.com>
Address: 2200 Ringwood Ave San Jose, CA 95131 USA



Please scan the QR code to access additional product information:
DBC1 (Phospho Thr454) Rabbit pAb