

Bim (Phospho Ser69) Rabbit pAb

CatalogNo: YP1276

Key Features

Host Species

- Rabbit

Reactivity

- Human, Mouse

Applications

- WB

MW

- 22kD (Observed)

Isotype

- IgG

Storage

Storage* -15°C to -25°C/1 year (Do not lower than -25°C)

Formulation Liquid in PBS containing 50% glycerol, 0.5% BSA and 0.02% sodium azide.

Recommended Dilution Ratios

WB 1:1000-2000

Basic Information

Clonality Polyclonal

Immunogen Information

Immunogen Synthesized phospho peptide around human Bim (Ser69)

Specificity This antibody detects endogenous levels of Human Mouse Bim (phospho-Ser69)

Target Information

Gene name BCL2L11 BIM

Protein Name

Bim (Ser69)

Organism	Gene ID	UniProt ID
Human	10018 ;	O43521 ;
Mouse	12125 ;	O54918 ;
Rat	64547 ;	O88498 ;

Cellular Localization

Endomembrane system ; Peripheral membrane protein . Associated with intracytoplasmic membranes. .; [Isoform BimEL]: Mitochondrion. Translocates from microtubules to mitochondria on loss of cell adherence.; [Isoform BimL]: Mitochondrion.; [Isoform BimS]: Mitochondrion.; [Isoform Bim-alpha1]: Mitochondrion.

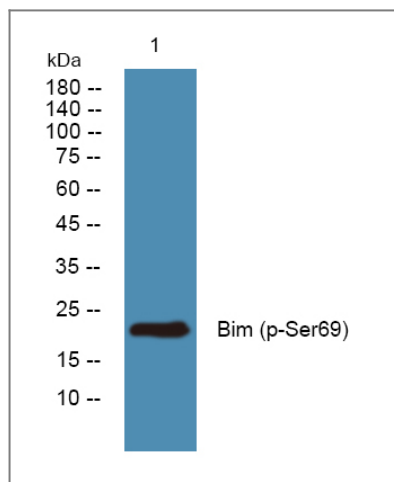
Tissue specificity

Isoform BimEL, isoform BimL and isoform BimS are the predominant isoforms and are widely expressed with tissue-specific variation. Isoform Bim-gamma is most abundantly expressed in small intestine and colon, and in lower levels in spleen, prostate, testis, heart, liver and kidney.

Function

Domain:The BH3 motif is required for Bcl-2 binding and cytotoxicity.,Function:Induces apoptosis. Isoform BimL is more potent than isoform BimEL. Isoform Bim-alpha1, isoform Bim-alpha2 and isoform Bim-alpha3 induce apoptosis, although less potent than the isoforms BimEL, BimL and BimS. Isoform Bim-gamma induces apoptosis.,similarity:Belongs to the Bcl-2 family.,subcellular location:Associated with intracytoplasmic membranes.,subunit:Forms heterodimers with a number of antiapoptotic Bcl-2 proteins including MCL1, BCL2, BCL2L1 isoform Bcl-X(L), BCL2A1/BFL-1, and BHRF1. Does not heterodimerize with proapoptotic proteins such as BAD, BOK, BAX or BAK.,tissue specificity:Isoform BimEL, isoform BimL and isoform BimS are the predominant isoforms and are ubiquitously expressed with a tissue-specific variation. Isoform Bim-gamma is most abundantly expressed in small intestine and colon, and in lower levels in spleen, prostate, testis, heart, liver and kidney.,

Validation Data



Western blot analysis of lysates from U2OS cells, primary antibody was diluted at 1:1000, 4° over night

Contact information

Orders: order@immunoway.com
Support: tech@immunoway.com
Telephone: 877-594-3616 (Toll Free), 408-747-0185
Website: http://www.immunoway.com
Address: 2200 Ringwood Ave San Jose, CA 95131 USA



Please scan the QR code
to access additional
product information:
**Bim (Phospho
Ser69) Rabbit pAb**

For Research Use Only. Not for Use in Diagnostic Procedures.

[Antibody](#) | [ELISA Kits](#) | [Protein](#) | [Reagents](#)