

AP2M1 (Phospho Thr156) Rabbit pAb

CatalogNo: YP1260

Key Features

Host Species

- Rabbit

Reactivity

- Human, Mouse, Rat

Applications

- WB

MW

- 47kD (Observed)

Isotype

- IgG

Storage

Storage* -15°C to -25°C/1 year (Do not lower than -25°C)

Formulation Liquid in PBS containing 50% glycerol, 0.5% BSA and 0.02% sodium azide.

Recommended Dilution Ratios

WB 1:1000-2000

Basic Information

Clonality Polyclonal

Immunogen Information

Immunogen Synthesized phospho peptide around human AP2M1 (Thr156)

Specificity This antibody detects endogenous levels of Human AP2M1 (phospho-Thr156). The name of modified sites may be influenced by many factors, such as species (the modified site was not originally found in human samples) and the change of protein sequence (the previous protein sequence is incomplete, and the protein sequence may be prolonged with the development of protein sequencing technology). When naming, we will use the "numbers" in historical reference to keep the sites consistent with the reports. The antibody binds to the following modification sequence (lowercase letters are modification sites): QVtGQ

Target Information

Gene name AP2M1 CLAPM1 KIAA0109

Protein Name AP-2 complex subunit mu

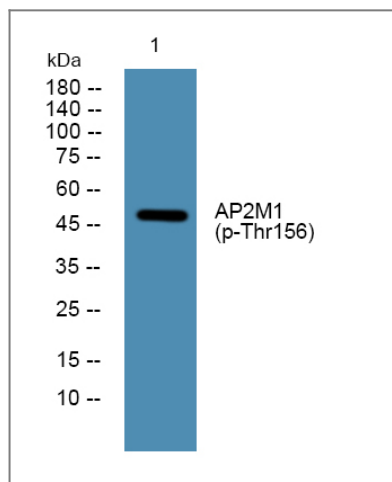
Organism	Gene ID	UniProt ID
Human	1173 ;	Q96CW1 ;
Mouse	11773 ;	P84091 ;
Rat	116563 ;	P84092 ;

Cellular Localization Cell membrane . Membrane, coated pit ; Peripheral membrane protein; Cytoplasmic side. AP-2 appears to be excluded from internalizing CCVs and to disengage from sites of endocytosis seconds before internalization of the nascent CCV. .

Tissue specificity Expressed in the brain (at protein level).

Function Function:Component of the adaptor complexes which link clathrin to receptors in coated vesicles. Clathrin-associated protein complexes are believed to interact with the cytoplasmic tails of membrane proteins, leading to their selection and concentration. AP50 is a subunit of the plasma membrane adaptor. The complex binds polyphosphoinositide-containing lipids.,PTM:Phosphorylated.,similarity:Belongs to the adaptor complexes medium subunit family.,similarity:Contains 1 MHD (mu homology) domain.,subcellular location:Component of the coat surrounding the cytoplasmic face of coated vesicles in the plasma membrane.,subunit:Adaptor protein complex 2 (AP-2) is a heterotetramer composed of two large adaptins (alpha-type subunit AP2A1 or AP2A2 and beta-type subunit AP2B1), a medium adaptin (mu-type subunit AP2M1) and a small adaptin (sigma-type subunit AP2S1). Interacts with ATP6V1H and MEGF10.,

Validation Data



Western blot analysis of lysates from K562 cells, primary antibody was diluted at 1:1000, 4°over night

| Contact information

Orders: order@immunoway.com
Support: tech@immunoway.com
Telephone: 877-594-3616 (Toll Free), 408-747-0185
Website: <http://www.immunoway.com>
Address: 2200 Ringwood Ave San Jose, CA 95131 USA



Please scan the QR code to access additional product information:
AP2M1 (Phospho Thr156) Rabbit pAb

For Research Use Only. Not for Use in Diagnostic Procedures.

[Antibody](#) | [ELISA Kits](#) | [Protein](#) | [Reagents](#)