

Nuclear Receptor NR4A1 (Phospho Ser351) Rabbit pAb

CatalogNo: YP1248

Key Features

Host Species

- Rabbit

Reactivity

- Human, Mouse, Rat

Applications

- WB, ELISA

MW

- 77kD (Observed)

Isotype

- IgG

Storage

Storage* -15°C to -25°C/1 year (Do not lower than -25°C)

Formulation Liquid in PBS containing 50% glycerol, 0.5% BSA and 0.02% sodium azide.

Recommended Dilution Ratios

WB 1:500-2000

ELISA(peptide) 1:5000-20000

Basic Information

Clonality Polyclonal

Immunogen Information

Immunogen Synthesized phospho peptide derived from human Nuclear Receptor NR4A1 (Phospho-Ser351)

Specificity This antibody detects endogenous phospho levels of human Nuclear Receptor NR4A1 (Phospho-Ser351). The name of modified sites may be influenced by many factors, such as species (the modified site was not originally found in human samples) and the change of protein sequence (the previous protein sequence is incomplete, and the protein sequence may be prolonged with the development of protein sequencing technology). When naming, we will use the "numbers" in historical reference to keep the sites consistent with the reports. The antibody binds to the following modification sequence (lowercase letters are modification sites): LPsKP

Target Information

Gene name NR4A1 GFRP1 HMR NAK1

Protein Name Nuclear Receptor NR4A1 (Phospho-Ser351)

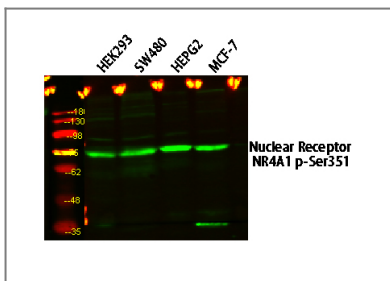
Organism	Gene ID	UniProt ID
Human	3164 ;	P22736 ;

Cellular Localization Nucleus . Cytoplasm . Mitochondrion . Nuclear export to the cytoplasm is XPO1-mediated and positively regulated by IFI27 (PubMed:22427340). Translocation to the mitochondrion upon interaction with RXRA and upon the presence of 9-cis retinoic acid (PubMed:17761950). .

Tissue specificity Fetal muscle and adult liver, brain and thyroid.

Function Function:Orphan nuclear receptor.,induction:By growth-stimulating agents.,similarity:Belongs to the nuclear hormone receptor family.,similarity:Belongs to the nuclear hormone receptor family. NR4 subfamily.,similarity:Contains 1 nuclear receptor DNA-binding domain.,subunit:Interacts with GADD45GIP1.,tissue specificity:Fetal muscle and adult liver, brain and thyroid.,

Validation Data



Western blot analysis of various lysates, primary antibody was diluted at 1:1000, 4° over night, secondary antibody(cat: RS23920)was diluted at 1:10000, 37° 1hour.

Contact information

Orders: order@immunoway.com
Support: tech@immunoway.com
Telephone: 877-594-3616 (Toll Free), 408-747-0185
Website: <http://www.immunoway.com>
Address: 2200 Ringwood Ave San Jose, CA 95131 USA



Please scan the QR code to access additional product information:
Nuclear Receptor NR4A1 (Phospho Ser351) Rabbit pAb