

RAGE (Phospho Tyr161) Rabbit pAb

CatalogNo: YP1236 Orthogonal Validated 

Key Features

Host Species

- Rabbit

Reactivity

- Human, Mouse, Rat

Applications

- IHC, IF, WB

MW

- 48kD (Observed)

Isotype

- IgG

Storage

Storage* -15°C to -25°C/1 year (Do not lower than -25°C)

Formulation Liquid in PBS containing 50% glycerol, 0.5% BSA and 0.02% sodium azide.

Recommended Dilution Ratios

IHC 1:50-200

WB 1:500-2000

IF 1:50-200

Basic Information

Clonality Polyclonal

Immunogen Information

Immunogen Synthesized peptide derived from human MOK (Phospho-Tyr161)

Specificity This antibody detects endogenous phospho levels of MOK (Phospho-Tyr161) at Human:Y161, Mouse:Y161, Rat:Y161. The name of modified sites may be influenced by many factors, such as species (the modified site was not originally found in human samples) and the change of protein sequence (the previous protein sequence is incomplete, and the protein sequence may be prolonged with the development of protein sequencing technology). When naming, we will use the "numbers" in historical reference to keep the sites consistent with the reports. The antibody binds to the following modification sequence (lowercase letters are modification sites): TEyIS

| Target Information

Gene name MOK RAGE RAGE1

Protein Name MAPK/MAK/MRK overlapping kinase

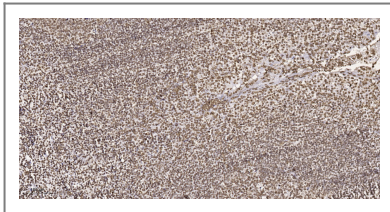
| Organism | Gene ID | UniProt ID |
|----------|-----------------------|-------------------------|
| Human | 5891; | Q9UQ07; |
| Mouse | | Q9WVS4; |

Cellular Localization Cytoplasm . Cell projection, cilium . Nucleus .

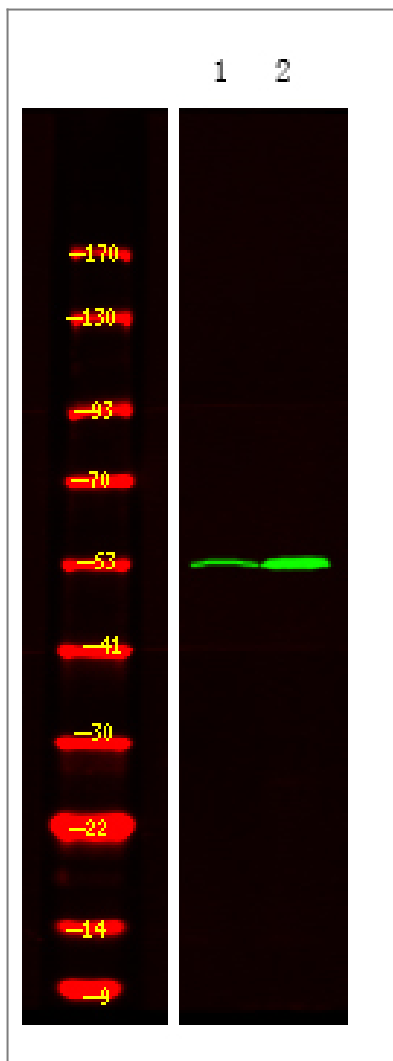
Tissue specificity Expressed in heart, brain, lung, kidney, and pancreas, and at very low levels in placenta, liver and skeletal muscle. Detected in retina.

Function Catalytic activity:ATP + a protein = ADP + a phosphoprotein.,enzyme regulation:Phosphorylation appears to increase the enzymatic activity.,Function:Able to phosphorylate several exogenous substrates and to undergo autophosphorylation.,PTM:Autophosphorylated.,similarity:Belongs to the protein kinase superfamily. CMGC Ser/Thr protein kinase family. CDC2/CDKX subfamily.,similarity:Contains 1 protein kinase domain.,tissue specificity:Expressed in heart, brain, lung, kidney, and pancreas, and at very low levels in placenta, liver and skeletal muscle. Detected in retina.,

| Validation Data



Immunohistochemical analysis of paraffin-embedded human tonsil. 1, Tris-EDTA,pH9.0 was used for antigen retrieval. 2 Antibody was diluted at 1:200(4° overnight.3,Secondary antibody was diluted at 1:200(room temperature, 45min).



Western Blot analysis of 1 HeLa cell, 2 LPS 100ng/mL 30min treated ,using primary antibody at 1:1000 dilution. Secondary antibody(catalog#:RS23920) was diluted at 1:10000

Contact information

Orders: order@immunoway.com
Support: tech@immunoway.com
Telephone: 877-594-3616 (Toll Free), 408-747-0185
Website: <http://www.immunoway.com>
Address: 2200 Ringwood Ave San Jose, CA 95131 USA



Please scan the QR code to access additional product information:
RAGE (Phospho Tyr161) Rabbit pAb

For Research Use Only. Not for Use in Diagnostic Procedures.

[Antibody](#) | [ELISA Kits](#) | [Protein](#) | [Reagents](#)