

EPHA1 (Phospho Tyr605) Rabbit pAb

CatalogNo: YP1229 Orthogonal Validated 

Key Features

Host Species

- Rabbit

Reactivity

- Human, Mouse

Applications

- IHC, IF, WB

MW

- 108kD (Observed)

Isotype

- IgG

Storage

Storage* -15°C to -25°C/1 year (Do not lower than -25°C)

Formulation Liquid in PBS containing 50% glycerol, 0.5% BSA and 0.02% sodium azide.

Recommended Dilution Ratios

IHC 1:50-200

WB 1:500-2000

IF 1:50-200

Basic Information

Clonality Polyclonal

Immunogen Information

Immunogen Synthesized peptide derived from human EPHA1 (Phospho-Tyr605)

Specificity This antibody detects endogenous phospho levels of EPHA1 (Phospho-Tyr605) at Human:Y605, Mouse:Y606. The name of modified sites may be influenced by many factors, such as species (the modified site was not originally found in human samples) and the change of protein sequence (the previous protein sequence is incomplete, and the protein sequence may be prolonged with the development of protein sequencing technology). When naming, we will use the "numbers" in historical reference to keep the sites consistent with the reports. The antibody binds to the following modification sequence (lowercase letters are modification sites): QAYED

Target Information

Gene name EPHA1 EPH EPHT EPHT1

Protein Name EPHA1 (Phospho-Tyr605)

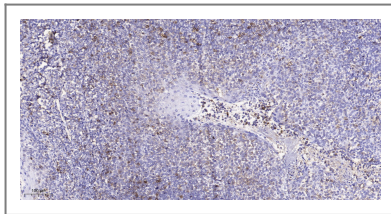
Organism	Gene ID	UniProt ID
Human	2041 ;	P21709 ;

Cellular Localization Cell membrane ; Single-pass type I membrane protein .

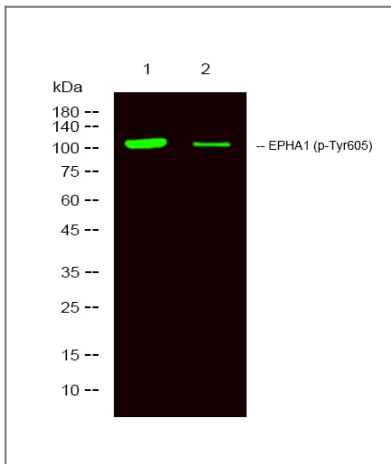
Tissue specificity Overexpressed in several carcinomas.

Function Catalytic activity:ATP + a [protein]-L-tyrosine = ADP + a [protein]-L-tyrosine phosphate.,Function:Receptor for members of the ephrin-A family. Binds with a low affinity to ephrin-A1.,similarity:Belongs to the protein kinase superfamily. Tyr protein kinase family.,similarity:Belongs to the protein kinase superfamily. Tyr protein kinase family. Ephrin receptor subfamily.,similarity:Contains 1 protein kinase domain.,similarity:Contains 1 SAM (sterile alpha motif) domain.,similarity:Contains 2 fibronectin type-III domains.,tissue specificity:Overexpressed in several carcinomas.,

Validation Data



Immunohistochemical analysis of paraffin-embedded human tonsil. 1, Antibody was diluted at 1:200(4° overnight). 2, Tris-EDTA,pH9.0 was used for antigen retrieval. 3,Secondary antibody was diluted at 1:200(room temperature, 45min).



Western Blot analysis of 1 HeLa treated with LPS, 2 HeLa,using primary antibody at 1:1000 dilution. Secondary antibody(catalog#:RS23920) was diluted at 1:10000

Contact information

Orders: order@immunoway.com
Support: tech@immunoway.com
Telephone: 877-594-3616 (Toll Free), 408-747-0185
Website: http://www.immunoway.com
Address: 2200 Ringwood Ave San Jose, CA 95131 USA



Please scan the QR code to access additional product information:
EPHA1 (Phospho Tyr605) Rabbit pAb

For Research Use Only. Not for Use in Diagnostic Procedures.

[Antibody](#) | [ELISA Kits](#) | [Protein](#) | [Reagents](#)