

Tensin-1 (Phospho Tyr1326) Rabbit pAb

CatalogNo: YP1198

Key Features

Host Species

- Rabbit

Reactivity

- Human, Mouse

Applications

- WB, ELISA

MW

- 185kD (Observed)

Isotype

- IgG

Storage

Storage* -15°C to -25°C/1 year (Do not lower than -25°C)

Formulation Liquid in PBS containing 50% glycerol, 0.5% BSA and 0.02% sodium azide.

Recommended Dilution Ratios

WB 1:500-1:2000

ELISA 1:20000

Not yet tested in other applications.

Basic Information

Clonality Polyclonal

Immunogen Information

Immunogen Synthesized phospho-peptide around the phosphorylation site of human Tensin-1 (phospho Tyr1326)

Specificity Phospho-Tensin-1 (Y1326) Polyclonal Antibody detects endogenous levels of Tensin-1 protein only when phosphorylated at Y1326. The name of modified sites may be influenced by many factors, such as species (the modified site was not originally found in human samples) and the change of protein sequence (the previous protein sequence is incomplete, and the protein sequence may be prolonged with the development of protein sequencing technology). When naming, we will use the "numbers" in historical reference to keep the sites consistent with the reports. The antibody binds to the following modification sequence (lowercase letters are modification sites): GGyST

Target Information

Gene name TNS1

Protein Name Tensin-1

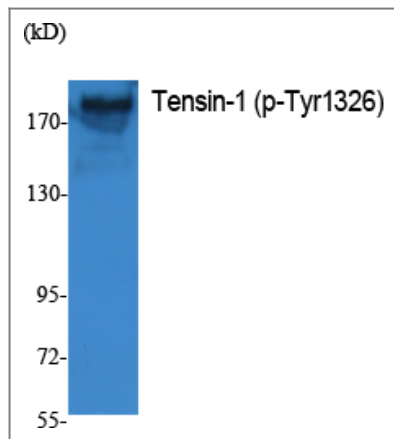
Organism	Gene ID	UniProt ID
Human	7145;	Q9HBL0;

Cellular Localization Cell surface . Cell junction, focal adhesion . Cytoplasm, cytoskeleton . Localized at cell periphery preferentially to fibrillar adhesions than focal adhesions. Translocates from the cell edge to cell center in an ITGB1BP1-dependent manner.

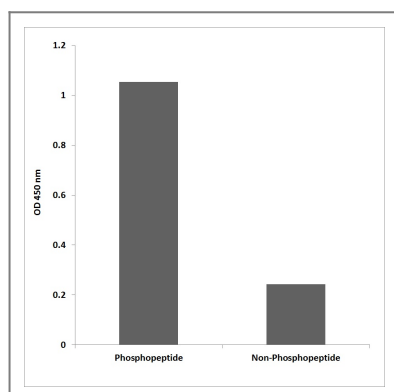
Tissue specificity Ubiquitous.

Function Function:May be involved in cell migration, cartilage development and in linking signal transduction pathways to the cytoskeleton.,PTM:Rapidly cleaved by calpain II.,PTM:Tyrosine phosphorylated.,similarity:Contains 1 C2 tensin-type domain.,similarity:Contains 1 phosphatase tensin-type domain.,similarity:Contains 1 SH2 domain.,subunit:Binds to actin filaments and interacts with phosphotyrosine-containing proteins. Interacts with STARD8.,tissue specificity:Ubiquitous.,

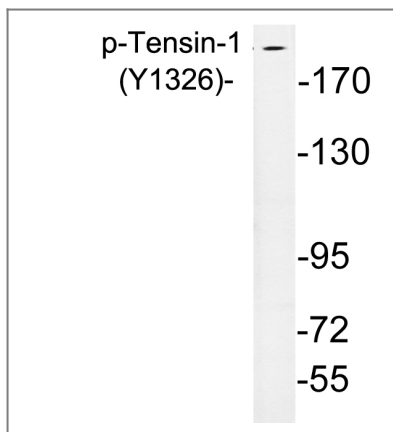
Validation Data



Western Blot analysis of extracts from K562 cells, using Phospho-Tensin-1 (Y1326) Polyclonal Antibody.



Enzyme-Linked Immunosorbent Assay (Phospho-ELISA) for Immunogen Phosphopeptide (Phospho-left) and Non-Phosphopeptide (Phospho-right), using Tensin-1 (Phospho-Tyr1326) Antibody



Western blot analysis of lysates from A10 cells, using phospho-Thrensin-1 (Phospho-Tyr1326) antibody.

Contact information

Orders: order@immunoway.com
Support: tech@immunoway.com
Telephone: 877-594-3616 (Toll Free), 408-747-0185
Website: <http://www.immunoway.com>
Address: 2200 Ringwood Ave San Jose, CA 95131 USA



Please scan the QR code to access additional product information:
Tensin-1 (Phospho-Tyr1326) Rabbit pAb

For Research Use Only. Not for Use in Diagnostic Procedures.

[Antibody](#) | [ELISA Kits](#) | [Protein](#) | [Reagents](#)