

# NFAT5 (Phospho Ser1197) Rabbit pAb

CatalogNo: YP1195

## Key Features

### Host Species

- Rabbit

### Reactivity

- Human, Mouse

### Applications

- WB, IHC, IF, ELISA

### MW

- 166kD (Calculated)

### Isotype

- IgG

## Storage

**Storage\*** -15°C to -25°C/1 year (Do not lower than -25°C)

**Formulation** Liquid in PBS containing 50% glycerol, 0.5% BSA and 0.02% sodium azide.

## Recommended Dilution Ratios

**WB 1:500-2000**

**IHC 1:50-300**

**IF 1:200-1:1000**

**ELISA 5000-1:20000**

## Basic Information

**Clonality** Polyclonal

## Immunogen Information

**Immunogen** The antiserum was produced against synthesized peptide derived from human NFAT5 around the phosphorylation site of Ser1197. AA range: 1171-1220

## Specificity

Phospho-NFAT5 (S1197) Polyclonal Antibody detects endogenous levels of NFAT5 protein only when phosphorylated at S1197. The name of modified sites may be influenced by many factors, such as species (the modified site was not originally found in human samples) and the change of protein sequence (the previous protein sequence is incomplete, and the protein sequence may be prolonged with the development of protein sequencing technology). When naming, we will use the "numbers" in historical reference to keep the sites consistent with the reports. The antibody binds to the following modification sequence (lowercase letters are modification sites):MLsQE

## Target Information

**Gene name** NFAT5

**Protein Name** Nuclear factor of activated T-cells 5

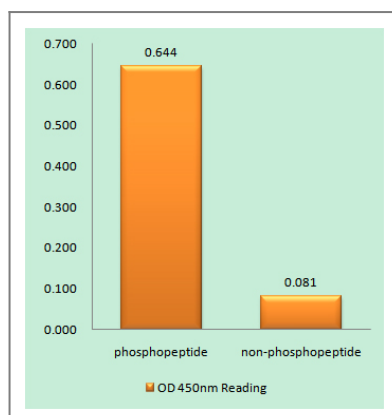
Organism	Gene ID	UniProt ID
Human	<a href="#">10725;</a>	<a href="#">O94916;</a>
Mouse		<a href="#">Q9WV30;</a>

**Cellular Localization** Nucleus . Cytoplasm . Nuclear distribution increases under hypertonic conditions. .

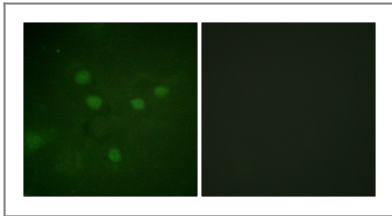
**Tissue specificity** Widely expressed, with highest levels in skeletal muscle, brain, heart and peripheral blood leukocytes.

**Function** Alternative products:Experimental confirmation may be lacking for some isoforms,Function:Plays a role in the inducible expression of genes. Regulates hypertonicity-induced cellular accumulation of osmolytes.,similarity:Contains 1 RHD (Rel-like) domain.,subunit:Does not bind with Fos and Jun transcription factors. But might be capable of forming stable dimers with DNA elements.,tissue specificity:Highest levels in skeletal muscle, brain, heart and peripheral blood leukocytes. Also expressed in placenta, lung, liver, kidney, pancreas, spleen, thymus, prostate, testis, ovary, small intestine and colon.,

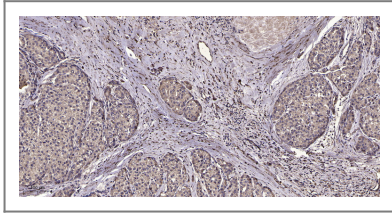
## Validation Data



Enzyme-Linked Immunosorbent Assay (Phospho-ELISA) for Immunogen Phosphopeptide (Phospho-left) and Non-Phosphopeptide (Phospho-right), using NFAT5 (Phospho-Ser1197) Antibody



Immunofluorescence analysis of COS7 cells, using NFAT5 (Phospho-Ser1197) Antibody. The picture on the right is blocked with the phospho peptide.



Immunohistochemical analysis of paraffin-embedded human liver cancer. 1, Antibody was diluted at 1:200(4° overnight). 2, Tris-EDTA,pH9.0 was used for antigen retrieval. 3,Secondary antibody was diluted at 1:200(room temperature, 45min).

## Contact information

Orders: [order@immunoway.com](mailto:order@immunoway.com)  
Support: [tech@immunoway.com](mailto:tech@immunoway.com)  
Telephone: 877-594-3616 (Toll Free), 408-747-0185  
Website: <http://www.immunoway.com>  
Address: 2200 Ringwood Ave San Jose, CA 95131 USA



Please scan the QR code to access additional product information:  
**NFAT5 (Phospho Ser1197) Rabbit pAb**

For Research Use Only. Not for Use in Diagnostic Procedures.

[Antibody](#) | [ELISA Kits](#) | [Protein](#) | [Reagents](#)