

## Mcl-1 (Phospho Ser159) Rabbit pAb

CatalogNo: YP1190

### Key Features

#### Host Species

- Rabbit

#### Reactivity

- Human, Mouse

#### Applications

- WB, IF, ELISA, IHC

#### MW

- 40kD in human, 39kD in mouse and rat (Observed)

#### Isotype

- IgG

### Storage

**Storage\*** -15°C to -25°C/1 year (Do not lower than -25°C)

**Formulation** Liquid in PBS containing 50% glycerol, 0.5% BSA and 0.02% sodium azide.

### Recommended Dilution Ratios

**WB 1:500-2000**

**IHC 1:50-300**

**IF 1:200-1:1000**

**ELISA 1:2000-20000**

### Basic Information

**Clonality** Polyclonal

### Immunogen Information

**Immunogen** The antiserum was produced against synthesized peptide derived from human MCL1 around the phosphorylation site of Ser159. AA range:125-174

**Specificity**

Phospho-Mcl-1 (S159) Polyclonal Antibody detects endogenous levels of Mcl-1 protein only when phosphorylated at S159. The name of modified sites may be influenced by many factors, such as species (the modified site was not originally found in human samples) and the change of protein sequence (the previous protein sequence is incomplete, and the protein sequence may be prolonged with the development of protein sequencing technology). When naming, we will use the "numbers" in historical reference to keep the sites consistent with the reports. The antibody binds to the following modification sequence (lowercase letters are modification sites):DGsLP

**| Target Information**

**Gene name** MCL1

**Protein Name** Induced myeloid leukemia cell differentiation protein Mcl-1

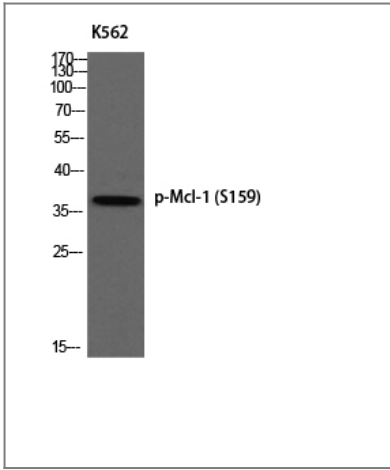
Organism	Gene ID	UniProt ID
Human	<a href="#">4170;</a>	<a href="#">Q07820;</a>
Mouse	<a href="#">17210;</a>	<a href="#">P97287;</a>

**Cellular Localization** Membrane ; Single-pass membrane protein . Cytoplasm. Mitochondrion. Nucleus, nucleoplasm. Cytoplasmic, associated with mitochondria.

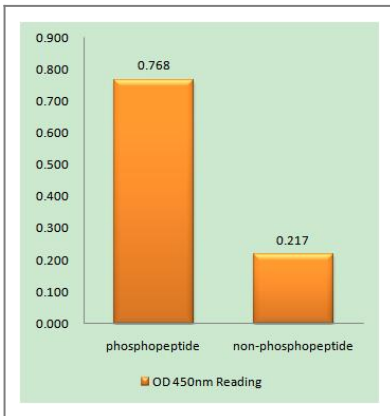
**Tissue specificity** Ewing sarcoma, Mammary gland, Myeloid leukemia cell, Neuroblastoma, Placenta, Th

**Function** Function: Involved in the regulation of apoptosis versus cell survival, and in the maintenance of viability but not of proliferation. Mediates its effects by interactions with a number of other regulators of apoptosis. Isoform 1 inhibits apoptosis while isoform 2 promotes it., induction: Expression increases early during phorbol-ester induced differentiation along the monocyte/macrophage pathway in myeloid leukemia cell lines ML-1. Rapidly up-regulated by CSF2 in ML-1 cells. Up-regulated by heat-shock induced differentiation. Expression increases early during retinoic acid-induced differentiation., PTM: Cleaved by CASP3 during apoptosis. In intact cells cleavage occurs preferentially after Asp-127, yielding a pro-apoptotic 28 kDa C-terminal fragment., PTM: Phosphorylated on Thr-163. Treatment with taxol or okadaic acid induces phosphorylation on additional sites., PTM: Rapidly degraded in the absence of phosphorylation on Thr-163 in the PEST region., similarity: Belongs to the Bcl-2 family., subcellular location: Cytoplasmic, associated with mitochondria., subunit: Interacts with BAD, BOK, BIK and BFM (By similarity). Interacts with PMAIP1. Isoform 1 interacts with BAX, BAK1, TPT1 and BCL2L11. Heterodimer of isoform 1 and isoform 2. Homodimers of isoform 1 or isoform 2 are not detected. Isoform 2 does not interact with pro-apoptotic BCL2-related proteins.,

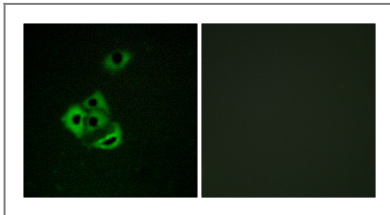
**| Validation Data**



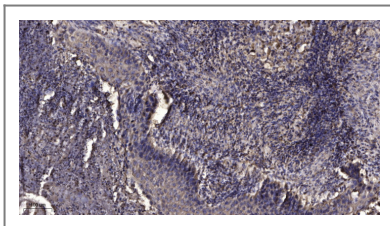
Western blot analysis of K562 using p-Mcl-1 (S159) antibody.



Enzyme-Linked Immunosorbent Assay (Phospho-ELISA) for Immunogen Phosphopeptide (Phospho-left) and Non-Phosphopeptide (Phospho-right), using MCL1 (Phospho-Ser159) Antibody



Immunofluorescence analysis of A549 cells, using MCL1 (Phospho-Ser159) Antibody. The picture on the right is blocked with the phospho peptide.



Immunohistochemical analysis of paraffin-embedded human Squamous cell carcinoma of lung. 1, Antibody was diluted at 1:200(4° overnight). 2, Tris-EDTA,pH9.0 was used for antigen retrieval. 3,Secondary antibody was diluted at 1:200(room temperature, 45min).

## Contact information

Orders: [order@immunoway.com](mailto:order@immunoway.com)  
 Support: [tech@immunoway.com](mailto:tech@immunoway.com)  
 Telephone: 877-594-3616 (Toll Free), 408-747-0185  
 Website: <http://www.immunoway.com>  
 Address: 2200 Ringwood Ave San Jose, CA 95131 USA



Please scan the QR code to access additional product information:  
**Mcl-1 (Phospho Ser159) Rabbit pAb**

