

GATA-3 (Phospho Ser308) Rabbit pAb

CatalogNo: YP1179

Key Features

Host Species

- Rabbit

Reactivity

- Human, Mouse

Applications

- WB, IF, ELISA

MW

- 48kD (Calculated)

Isotype

- IgG

Storage

Storage* -15°C to -25°C/1 year (Do not lower than -25°C)**Formulation** Liquid in PBS containing 50% glycerol, 0.5% BSA and 0.02% sodium azide.

Recommended Dilution Ratios

WB 1:500-2000**IF 1:200-1:1000****ELISA 1:10000****Not yet tested in other applications.**

Basic Information

Clonality Polyclonal

Immunogen Information

Immunogen The antiserum was produced against synthesized peptide derived from human GATA3 around the phosphorylation site of Ser308. AA range:274-323**Specificity** Phospho-GATA-3 (S308) Polyclonal Antibody detects endogenous levels of GATA-3 protein only when phosphorylated at S308. The name of modified sites may be influenced by many factors, such as species (the modified site was not originally found in human samples) and the change of protein sequence (the previous protein sequence is incomplete, and the protein sequence may be prolonged with the development of protein sequencing technology). When naming, we will use the "numbers" in historical reference to keep the sites consistent with the reports. The antibody binds to the following modification sequence (lowercase letters are modification sites):RLsAA

Target Information

Gene name GATA3

Protein Name Trans-acting T-cell-specific transcription factor GATA-3

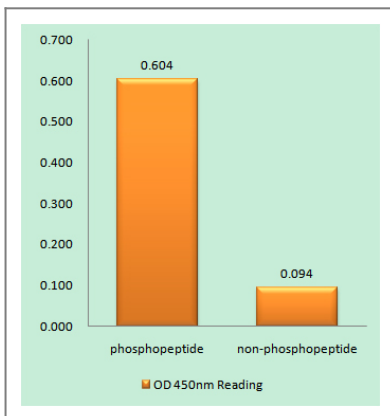
Organism	Gene ID	UniProt ID
Human	2625;	P23771;
Mouse	14462;	P23772;

Cellular Localization Nucleus.

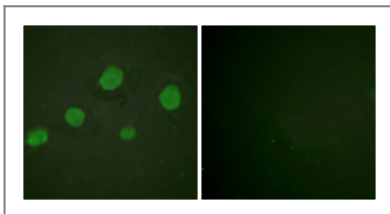
Tissue specificity T-cells and endothelial cells.

Function Disease:Defects in GATA3 are the cause of hypoparathyroidism with sensorineural deafness and renal dysplasia (HDR) [MIM:146255]; also known as Barakat syndrome.,Function:Transcriptional activator which binds to the enhancer of the T-cell receptor alpha and delta genes. Binds to the consensus sequence 5'-AGATAG-3'. ,similarity:Contains 2 GATA-type zinc fingers.,tissue specificity:T-cells and endothelial cells.,

Validation Data



Enzyme-Linked Immunosorbent Assay (Phospho-ELISA) for Immunogen Phosphopeptide (Phospho-left) and Non-Phosphopeptide (Phospho-right), using GATA3 (Phospho-Ser308) Antibody



Immunofluorescence analysis of HUVEC cells, using GATA3 (Phospho-Ser308) Antibody. The picture on the right is blocked with the phospho peptide.

Contact information

Orders: order@immunoway.com
Support: tech@immunoway.com
Telephone: 877-594-3616 (Toll Free), 408-747-0185
Website: http://www.immunoway.com
Address: 2200 Ringwood Ave San Jose, CA 95131 USA



Please scan the QR code
to access additional
product information:
**GATA-3 (Phospho
Ser308) Rabbit pAb**

For Research Use Only. Not for Use in Diagnostic Procedures.

[Antibody](#) | [ELISA Kits](#) | [Protein](#) | [Reagents](#)