

## Fos B (Phospho Ser27) Rabbit pAb

CatalogNo: YP1178

Orthogonal Validated 

### Key Features

#### Host Species

- Rabbit

#### Reactivity

- Human, Mouse

#### Applications

- WB, IHC, IF, ELISA

#### MW

- 35kD (Observed)

#### Isotype

- IgG

### Recommended Dilution Ratios

**WB 1:500-1:2000****IHC 1:100-1:300****IF 1:200-1:1000****ELISA 1:5000****Not yet tested in other applications.**

### Storage

#### Storage\*

-15°C to -25°C/1 year (Do not lower than -25°C)

#### Formulation

Liquid in PBS containing 50% glycerol, 0.5% BSA and 0.02% sodium azide.

### Basic Information

#### Clonality

Polyclonal

### Immunogen Information

#### Immunogen

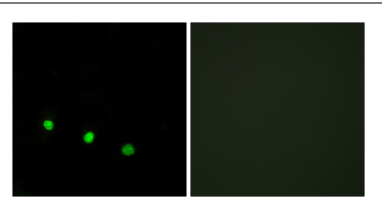
The antiserum was produced against synthesized peptide derived from human FosB around the phosphorylation site of Ser27. AA range:12-61

**Specificity** Phospho-Fos B (S27) Polyclonal Antibody detects endogenous levels of Fos B protein only when phosphorylated at S27. The name of modified sites may be influenced by many factors, such as species (the modified site was not originally found in human samples) and the change of protein sequence (the previous protein sequence is incomplete, and the protein sequence may be prolonged with the development of protein sequencing technology). When naming, we will use the "numbers" in historical reference to keep the sites consistent with the reports. The antibody binds to the following modification sequence (lowercase letters are modification sites): YLsSV

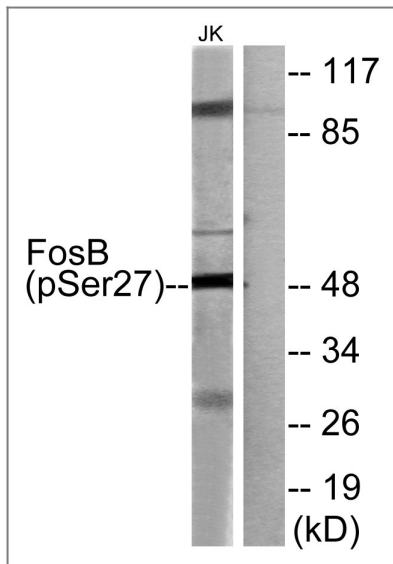
## Target Information

Gene name	FOSB		
Protein Name	Protein fosB		
	Organism	Gene ID	UniProt ID
	Human	<a href="#">2354</a> ;	<a href="#">P53539</a> ;
	Mouse	<a href="#">14282</a> ;	<a href="#">P13346</a> ;
Cellular Localization	Nucleus .		
Tissue specificity	[Isoform 11]: Expressed in the nucleus accumbens of the striatum (at protein level).		
Function	Function:FosB interacts with Jun proteins enhancing their DNA binding activity.,similarity:Belongs to the bZIP family.,similarity:Belongs to the bZIP family. Fos subfamily.,similarity:Contains 1 bZIP domain.,subunit:Heterodimer.,		

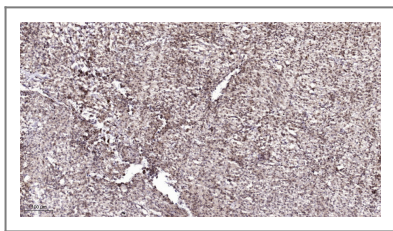
## Validation Data



Immunofluorescence analysis of HUVEC cells treated with EGF 200nM 5', using FosB (Phospho-Ser27) Antibody. The picture on the right is blocked with the phospho peptide.



Western blot analysis of FosB (Phospho-Ser27) Antibody. The lane on the right is blocked with the FosB (Phospho-Ser27) peptide.



Immunohistochemical analysis of paraffin-embedded human Colon cancer. 1, Antibody was diluted at 1:200(4° overnight). 2, Tris-EDTA,pH9.0 was used for antigen retrieval. 3,Secondary antibody was diluted at 1:200(room temperature, 45min).

## Contact information

Orders: [order@immunoway.com](mailto:order@immunoway.com)  
 Support: [tech@immunoway.com](mailto:tech@immunoway.com)  
 Telephone: 877-594-3616 (Toll Free), 408-747-0185  
 Website: <http://www.immunoway.com>  
 Address: 2200 Ringwood Ave San Jose, CA 95131 USA



Please scan the QR code to access additional product information:

**Fos B (Phospho Ser27) Rabbit pAb**

For Research Use Only. Not for Use in Diagnostic Procedures.

[Antibody](#) | [ELISA Kits](#) | [Protein](#) | [Reagents](#)