

Fas (Phospho Tyr291) Rabbit pAb

CatalogNo: YP1177

| Key Features

Host Species

- Rabbit

Reactivity

- Human,Rat,Mouse,

Applications

- IF,ELISA

MW

- 38kD (Calculated)

Isotype

- IgG

| Recommended Dilution Ratios

IF 1:200-1:1000

ELISA 1:5000

Not yet tested in other applications

| Storage

Storage*

-15°C to -25°C/1 year(Do not lower than -25°C)

Formulation

Liquid in PBS containing 50% glycerol, 0.5% BSA and 0.02% sodium azide.

| Basic Information

Clonality

Polyclonal

| Immunogen Information

Immunogen

The antiserum was produced against synthesized peptide derived from human Fas around the phosphorylation site of Tyr291. AA range:257-306

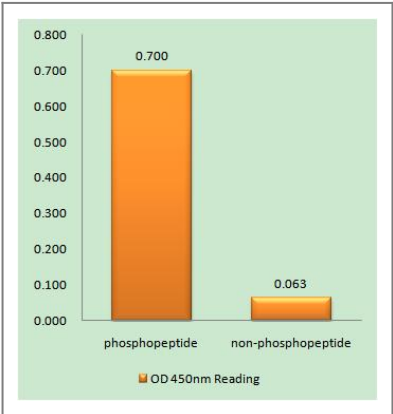
Specificity

Phospho-Fas (Y291) Polyclonal Antibody detects endogenous levels of Fas protein only when phosphorylated at Y291.The name of modified sites may be influenced by many factors, such as species (the modified site was not originally found in human samples) and the change of protein sequence (the previous protein sequence is incomplete, and the protein sequence may be prolonged with the development of protein sequencing technology). When naming, we will use the "numbers" in historical reference to keep the sites consistent with the reports. The antibody binds to the following modification sequence (lowercase letters are modification sites):EAYDT

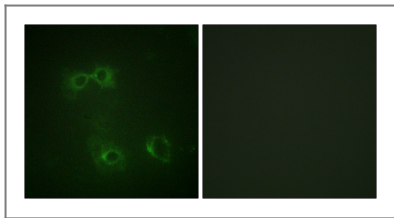
Target Information

Gene name	FAS									
Protein Name	Tumor necrosis factor receptor superfamily member 6									
	<table><tr><th>Organism</th><th>Gene ID</th><th>UniProt ID</th></tr><tr><td>Human</td><td>355;</td><td>P25445;</td></tr><tr><td>Mouse</td><td></td><td>P25446;</td></tr></table>	Organism	Gene ID	UniProt ID	Human	355 ;	P25445 ;	Mouse		P25446 ;
Organism	Gene ID	UniProt ID								
Human	355 ;	P25445 ;								
Mouse		P25446 ;								
Cellular Localization	[Isoform 1]: Cell membrane ; Single-pass type I membrane protein . Membrane raft .; [Isoform 2]: Secreted.; [Isoform 3]: Secreted.; [Isoform 4]: Secreted.; [Isoform 5]: Secreted.; [Isoform 6]: Secreted.									
Tissue specificity	Isoform 1 and isoform 6 are expressed at equal levels in resting peripheral blood mononuclear cells. After activation there is an increase in isoform 1 and decrease in the levels of isoform 6.									
Function	Disease:Defects in FAS are the cause of autoimmune lymphoproliferative syndrome type 1A (ALPS1A) [MIM:601859]; also known as Canale-Smith syndrome (CSS). ALPS is a childhood syndrome involving hemolytic anemia and thrombocytopenia with massive lymphadenopathy and splenomegaly.,Domain:Contains a death domain involved in the binding of FADD, and maybe to other cytosolic adapter proteins.,Function:Receptor for TNFSF6/FASLG. The adapter molecule FADD recruits caspase-8 to the activated receptor. The resulting death-inducing signaling complex (DISC) performs caspase-8 proteolytic activation which initiates the subsequent cascade of caspases (aspartate-specific cysteine proteases) mediating apoptosis. FAS-mediated apoptosis may have a role in the induction of peripheral tolerance, in the antigen-stimulated suicide of mature T-cells, or both. The secreted isoforms 2 to 6 block apoptosis (in vitro).,online information:Mutations in TNFRSF6 causing ALPS type Ia,similarity:Contains 1 death domain.,similarity:Contains 3 TNFR-Cys repeats.,subunit:Binds DAXX. Interacts with HIPK3. Part of a complex containing HIPK3 and FADD (By similarity). Binds RIPK1 and FAIM2. Interacts with BRE and FEM1B.,tissue specificity:Isoform 1 and isoform 6 are expressed at equal levels in resting peripheral blood mononuclear cells. After activation there is an increase in isoform 1 and decrease in the levels of isoform 6.,									

Validation Data



Enzyme-Linked Immunosorbent Assay (Phospho-ELISA) for Immunogen Phosphopeptide (Phospho-left) and Non-Phosphopeptide (Phospho-right), using FAS (Phospho-Tyr291) Antibody



Immunofluorescence analysis of COS7 cells, using FAS (Phospho-Tyr291) Antibody. The picture on the right is blocked with the phospho peptide.

| Contact information

Orders: order@immunoway.com
Support: tech@immunoway.com
Telephone: 877-594-3616 (Toll Free), 408-747-0185
Website: <http://www.immunoway.com>
Address: 2200 Ringwood Ave San Jose, CA 95131 USA



Please scan the QR code to access additional product information:

Fas (Phospho Tyr291) Rabbit pAb

For Research Use Only. Not for Use in Diagnostic Procedures.

[Antibody](#) | [ELISA Kits](#) | [Protein](#) | [Reagents](#)