

# Cyclin E2 (Phospho Thr392) Rabbit pAb

CatalogNo: YP1173

## Key Features

### Host Species

- Rabbit

### Reactivity

- Human, Mouse

### Applications

- WB, IF, ELISA

### MW

- 47kD (Calculated)

### Isotype

- IgG

## Storage

**Storage\*** -15°C to -25°C/1 year (Do not lower than -25°C)

**Formulation** Liquid in PBS containing 50% glycerol, 0.5% BSA and 0.02% sodium azide.

## Recommended Dilution Ratios

**IF 1:200-1:1000**

**WB 1:1000-1:5000**

**ELISA 1:10000**

**Not yet tested in other applications**

## Basic Information

**Clonality** Polyclonal

## Immunogen Information

**Immunogen** The antiserum was produced against synthesized peptide derived from human Cyclin E2 around the phosphorylation site of Thr392. AA range: 355-404

## Specificity

Phospho-Cyclin E2 (T392) Polyclonal Antibody detects endogenous levels of Cyclin E2 protein only when phosphorylated at T392. The name of modified sites may be influenced by many factors, such as species (the modified site was not originally found in human samples) and the change of protein sequence (the previous protein sequence is incomplete, and the protein sequence may be prolonged with the development of protein sequencing technology). When naming, we will use the "numbers" in historical reference to keep the sites consistent with the reports. The antibody binds to the following modification sequence (lowercase letters are modification sites):IMtPP

---

## | Target Information

**Gene name** CCNE2

**Protein Name** G1/S-specific cyclin-E2

Organism	Gene ID	UniProt ID
Human	<a href="#">9134;</a>	<a href="#">O96020;</a>
Mouse	<a href="#">12448;</a>	<a href="#">Q9Z238;</a>

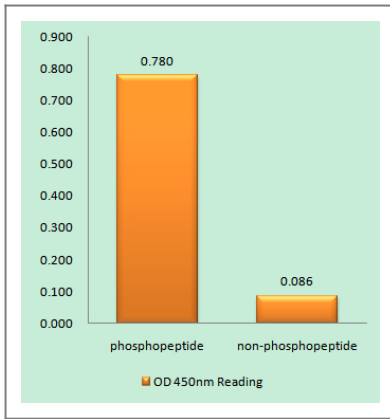
**Cellular Localization** Nucleus .

**Tissue specificity** According to PubMed:9858585, highest levels of expression in adult testis, thymus and brain. Lower levels in placenta, spleen and colon. Consistently elevated levels in tumor-derived cells compared to non-transformed proliferating cells. According to PubMed:9840927: low levels in thymus, prostate, brain, skeletal muscle, and kidney. Elevated levels in lung. According to PubMed:9840943 highly expressed in testis, placenta, thymus and brain. In a lesser extent in small intestine and colon.

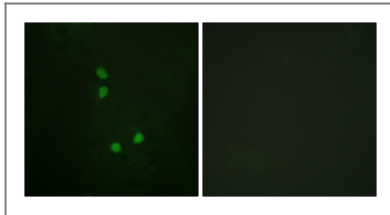
**Function** Function:Essential for the control of the cell cycle at the late G1 and early S phase.,induction:Activated by papilloma viral oncoproteins E6 and E7 which bind to and inactivate p53 and Rb, respectively.,PTM:Phosphorylation by CDK2 triggers its release from CDK2 and degradation via the ubiquitin proteasome pathway.,similarity:Belongs to the cyclin family.,similarity:Belongs to the cyclin family. Cyclin E subfamily.,subunit:Interacts with the CDK2 (in vivo) and CDK3 (in vitro) protein kinases to form a serine/threonine kinase holoenzyme complex. The cyclin subunit imparts substrate specificity to the complex.,tissue specificity:According to PubMed:9858585: highest levels in adult testis, thymus and brain. Lower levels in placenta, spleen and colon. Consistently elevated levels in tumor-derived cells compared to non-transformed proliferating cells. According to PubMed:9840927: low levels in thymus, prostate, brain, skeletal muscle, and kidney. Elevated levels in lung. According to PubMed:9840943: highly expressed in testis, placenta, thymus and brain. In a lesser extent in small intestine and colon.,

---

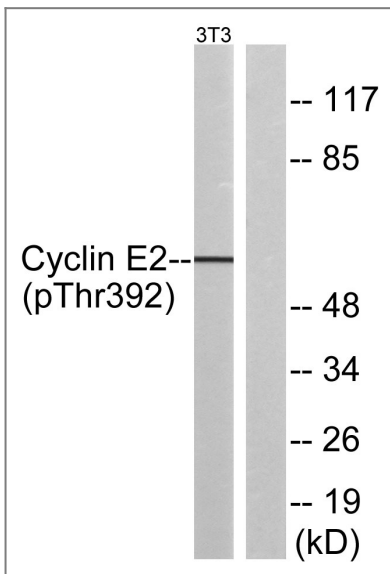
## | Validation Data



Enzyme-Linked Immunosorbent Assay (Phospho-ELISA) for Immunogen Phosphopeptide (Phospho-left) and Non-Phosphopeptide (Phospho-right), using Cyclin E2 (Phospho-Thr392) Antibody



Immunofluorescence analysis of NIH/3T3 cells, using Cyclin E2 (Phospho-Thr392) Antibody. The picture on the right is blocked with the phospho peptide.



Western blot analysis of Cyclin E2 (Phospho-Thr392) Antibody. The lane on the right is blocked with the Cyclin E2 (Phospho-Thr392) peptide.

## Contact information

Orders: [order@immunoway.com](mailto:order@immunoway.com)  
 Support: [tech@immunoway.com](mailto:tech@immunoway.com)  
 Telephone: 877-594-3616 (Toll Free), 408-747-0185  
 Website: <http://www.immunoway.com>  
 Address: 2200 Ringwood Ave San Jose, CA 95131 USA



Please scan the QR code to access additional product information:  
**Cyclin E2 (Phospho Thr392) Rabbit pAb**