

PLB (Phospho Ser16/Thr17) Rabbit pAb

CatalogNo: YP1164

Key Features

Host Species

- Rabbit

Reactivity

- Human, Mouse, Rat

Applications

- WB, IHC, IF, ELISA

MW

- 6kD (Calculated)

Isotype

- IgG

Storage

Storage* -15°C to -25°C/1 year (Do not lower than -25°C)

Formulation Liquid in PBS containing 50% glycerol, 0.5% BSA and 0.02% sodium azide.

Recommended Dilution Ratios

WB 1:500-2000

IHC 1:50-300

IF 1:200-1:1000

ELISA 5000-1:20000

Basic Information

Clonality Polyclonal

Immunogen Information

Immunogen The antiserum was produced against synthesized peptide derived from human PLB around the phosphorylation site of Ser16 and Thr17. AA range:1-50

Specificity

This antibody detects endogenous levels of PLB only when phosphorylated at Ser16 or Thr17, and dually phosphorylated at two sites. The name of modified sites may be influenced by many factors, such as species (the modified site was not originally found in human samples) and the change of protein sequence (the previous protein sequence is incomplete, and the protein sequence may be prolonged with the development of protein sequencing technology). When naming, we will use the "numbers" in historical reference to keep the sites consistent with the reports. The antibody binds to the following modification sequence (lowercase letters are modification sites): RAS₁₆LE

Target Information

Gene name PLN

Protein Name Cardiac phospholamban

Organism	Gene ID	UniProt ID
Human	5350 ;	P26678 ;
Mouse	18821 ;	P61014 ;
Rat	64672 ;	P61016 ;

Cellular Localization

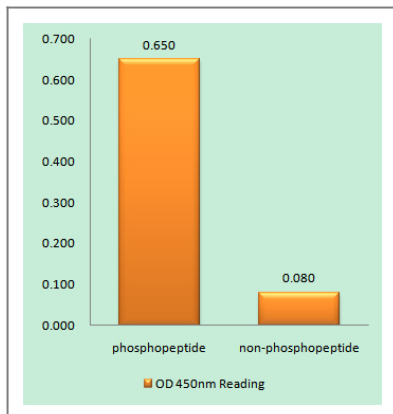
Endoplasmic reticulum membrane ; Single-pass membrane protein . Sarcoplasmic reticulum membrane ; Single-pass membrane protein . Mitochondrion membrane ; Single-pass membrane protein . Membrane ; Single-pass membrane protein . Colocalizes with HAX1 at the endoplasmic reticulum (PubMed:17241641). Colocalizes with DMPK at the sarcoplasmic reticulum (PubMed:15598648). .

Tissue specificity Heart muscle (at protein level).

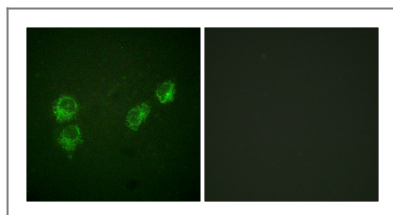
Function

Disease: Defects in PLN are the cause of cardiomyopathy dilated type 1P (CMD1P) [MIM:609909]. Dilated cardiomyopathy is a disorder characterized by ventricular dilation and impaired systolic function, resulting in congestive heart failure and arrhythmia. Patients are at risk of premature death. Function: Phospholamban has been postulated to regulate the activity of the calcium pump of cardiac sarcoplasmic reticulum. PTM: Phosphorylated in response to beta-adrenergic stimulation. Similarity: Belongs to the phospholamban family. Subunit: Homopentamer. Tissue specificity: Heart.

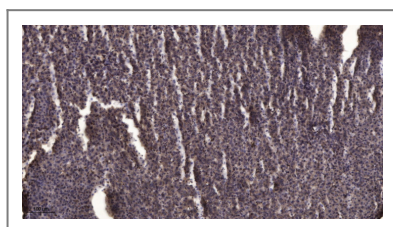
Validation Data



Enzyme-Linked Immunosorbent Assay (Phospho-ELISA) for Immunogen Phosphopeptide (Phospho-left) and Non-Phosphopeptide (Phospho-right), using PLB (Phospho-Ser16+Thr17) Antibody



Immunofluorescence analysis of HUVEC cells, using PLB (Phospho-Ser16+Thr17) Antibody. The picture on the right is blocked with the phosphopeptide.



Immunohistochemical analysis of paraffin-embedded human liver cancer. 1, Antibody was diluted at 1:200(4° overnight). 2, Tris-EDTA,pH9.0 was used for antigen retrieval. 3,Secondary antibody was diluted at 1:200(room temperature, 45min).

Contact information

Orders: order@immunoway.com
 Support: tech@immunoway.com
 Telephone: 877-594-3616 (Toll Free), 408-747-0185
 Website: <http://www.immunoway.com>
 Address: 2200 Ringwood Ave San Jose, CA 95131 USA



Please scan the QR code to access additional product information:
PLB (Phospho Ser16/Thr17) Rabbit pAb

For Research Use Only. Not for Use in Diagnostic Procedures.

[Antibody](#) | [ELISA Kits](#) | [Protein](#) | [Reagents](#)