

MAP-4 (Phospho Ser696) Rabbit pAb

CatalogNo: YP1158

Key Features

Host Species

- Rabbit

Reactivity

- Human, Mouse, Rat

Applications

- IHC, IF, ELISA

MW

- 121kD (Calculated)
121kD (Observed)

Isotype

- IgG

Storage

Storage* -15°C to -25°C/1 year (Do not lower than -25°C)

Formulation Liquid in PBS containing 50% glycerol, 0.5% BSA and 0.02% sodium azide.

Recommended Dilution Ratios

IHC 1:100-1:300

IF 1:200-1:1000

ELISA 1:5000

Not yet tested in other applications.

Basic Information

Clonality Polyclonal

Immunogen Information

Immunogen The antiserum was produced against synthesized peptide derived from human MAP4 around the phosphorylation site of Ser696. AA range:662-711

Specificity

Phospho-MAP-4 (S696) Polyclonal Antibody detects endogenous levels of MAP-4 protein only when phosphorylated at S696. The name of modified sites may be influenced by many factors, such as species (the modified site was not originally found in human samples) and the change of protein sequence (the previous protein sequence is incomplete, and the protein sequence may be prolonged with the development of protein sequencing technology). When naming, we will use the "numbers" in historical reference to keep the sites consistent with the reports. The antibody binds to the following modification sequence (lowercase letters are modification sites):PPsPE

Target Information

Gene name MAP4

Protein Name Microtubule-associated protein 4

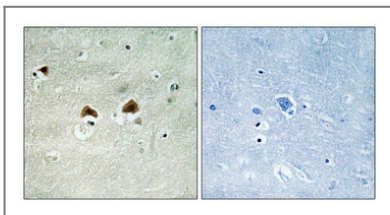
Organism	Gene ID	UniProt ID
Human	4134;	P27816;
Mouse	17758;	P27546;
Rat	367171;	Q5M7W5;

Cellular Localization Cytoplasm, cytoskeleton . Cytoplasm, cytoskeleton, microtubule organizing center . Recruitment to microtubule is inhibited by microtubules polyglutamylation. .

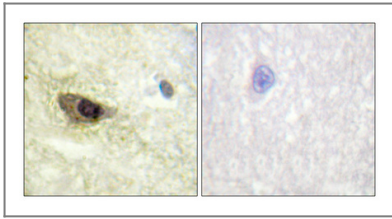
Tissue specificity Bone marrow,Brain,Cerebellum,Colon carcinoma,Epithelium,Eye,Heart,Liver,Lym

Function Alternative products:Additional isoforms seem to exist,Caution:The sequence shown here is derived from an Ensembl automatic analysis pipeline and should be considered as preliminary data.,Function:Non-neuronal microtubule-associated protein. Promotes microtubule assembly.,PTM:Phosphorylated upon DNA damage, probably by ATM or ATR (By similarity). Phosphorylation on Ser-787 negatively regulates MAP4 activity to promote microtubule assembly. Isoform 3 is phosphorylated on Ser-337 and Ser-338.,similarity:Contains 3 Tau/MAP repeats.,similarity:Contains 4 Tau/MAP repeats.,

Validation Data



Immunohistochemical analysis of paraffin-embedded Human brain. Antibody was diluted at 1:100(4° overnight). High-pressure and temperature Tris-EDTA,pH8.0 was used for antigen retrieval. Negative contrl (right) obtained from antibody was pre-absorbed by immunogen peptide.



Immunohistochemical analysis of paraffin-embedded Human brain. Antibody was diluted at 1:100(4° overnight). High-pressure and temperature Tris-EDTA,pH8.0 was used for antigen retrieval. Negative contrl (right) obtained from antibody was pre-absorbed by immunogen peptide.

| Contact information

Orders: order@immunoway.com
Support: tech@immunoway.com
Telephone: 877-594-3616 (Toll Free), 408-747-0185
Website: <http://www.immunoway.com>
Address: 2200 Ringwood Ave San Jose, CA 95131 USA



Please scan the QR code to access additional product information:
MAP-4 (Phospho Ser696) Rabbit pAb

For Research Use Only. Not for Use in Diagnostic Procedures.

[Antibody](#) | [ELISA Kits](#) | [Protein](#) | [Reagents](#)