

# Integrin $\alpha$ 4 (Phospho Ser1027) Rabbit pAb

CatalogNo: YP1155

## Key Features

### Host Species

- Rabbit

### Reactivity

- Human, Mouse

### Applications

- IHC, IF, ELISA

### MW

- 115kD (Calculated)

### Isotype

- IgG

## Storage

**Storage\*** -15°C to -25°C/1 year (Do not lower than -25°C)

**Formulation** Liquid in PBS containing 50% glycerol, 0.5% BSA and 0.02% sodium azide.

## Recommended Dilution Ratios

**IHC 1:100-1:300**

**IF 1:200-1:1000**

**ELISA 1:5000**

**Not yet tested in other applications.**

## Basic Information

**Clonality** Polyclonal

## Immunogen Information

**Immunogen** The antiserum was produced against synthesized peptide derived from human Integrin  $\alpha$ 4 around the phosphorylation site of Ser1027. AA range:983-1032

**Specificity** Phospho-Integrin  $\alpha$ 4 (S1027) Polyclonal Antibody detects endogenous levels of Integrin  $\alpha$ 4 protein only when phosphorylated at S1027. The name of modified sites may be influenced by many factors, such as species (the modified site was not originally found in human samples) and the change of protein sequence (the previous protein sequence is incomplete, and the protein sequence may be prolonged with the development of protein sequencing technology). When naming, we will use the "numbers" in historical reference to keep the sites consistent with the reports. The antibody binds to the following modification sequence (lowercase letters are modification sites):RDsWS

---

## | Target Information

**Gene name** ITGA4

**Protein Name** Integrin alpha-4

Organism	Gene ID	UniProt ID
Human	<a href="#">3676</a> ;	<a href="#">P13612</a> ;
Mouse	<a href="#">16401</a> ;	<a href="#">Q00651</a> ;

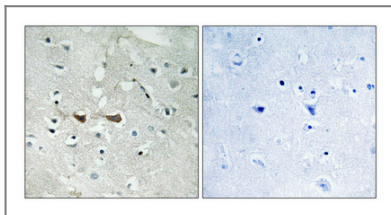
**Cellular Localization** Membrane; Single-pass type I membrane protein.

**Tissue specificity** Lymph,Peripheral blood,Prostate,Spleen,Testis,

**Function** Domain:The SG1 motif is involved in binding to chondroitin sulfate glycosaminoglycan and cell adhesion.,Function:Integrins alpha-4/beta-1 (VLA-4) and alpha-4/beta-7 are receptors for fibronectin. They recognize one or more domains within the alternatively spliced CS-1 and CS-5 regions of fibronectin. They are also receptors for VCAM1. Integrin alpha-4/beta-1 recognizes the sequence Q-I-D-S in VCAM1. Integrin alpha-4/beta-7 is also a receptor for MADCAM1. It recognizes the sequence L-D-T in MADCAM1. On activated endothelial cells integrin VLA-4 triggers homotypic aggregation for most VLA-4-positive leukocyte cell lines. It may also participate in cytolytic T-cell interactions with target cells.,PTM:Phosphorylation on Ser-1027 inhibits PXN binding.,similarity:Belongs to the integrin alpha chain family.,similarity:Contains 7 FG-GAP repeats.,subunit:Heterodimer of an alpha and a beta subunit. The alpha subunit can sometimes be cleaved into two non-covalently associated fragments. Alpha-4 associates with either beta-1 or beta-7. Alpha-4 interacts with PXN, LPXN, and TGFB1I1/HIC5. Interacts with CSPG4 through CSPG4 chondroitin sulfate glycosaminoglycan.,

---

## | Validation Data



Immunohistochemical analysis of paraffin-embedded Human brain. Antibody was diluted at 1:100 (4°C overnight). High-pressure and temperature Tris-EDTA,pH8.0 was used for antigen retrieval. Negative contrl (right) obtained from antibody was pre-absorbed by immunogen peptide.

## | Contact information

Orders: order@immunoway.com  
Support: tech@immunoway.com  
Telephone: 877-594-3616 (Toll Free), 408-747-0185  
Website: <http://www.immunoway.com>  
Address: 2200 Ringwood Ave San Jose, CA 95131 USA



Please scan the QR code to access additional product information:  
**Integrin  $\alpha$ 4**  
**(Phospho Ser1027)**  
**Rabbit pAb**

---

For Research Use Only. Not for Use in Diagnostic Procedures.

[Antibody](#) | [ELISA Kits](#) | [Protein](#) | [Reagents](#)