

## HMG-14 (Phospho Ser21) Rabbit pAb

CatalogNo: YP1153

### Key Features

#### Host Species

- Rabbit

#### Reactivity

- Human, Mouse, Rat

#### Applications

- IHC, IF, ELISA

#### MW

- 11kD (Calculated)

#### Isotype

- IgG

### Storage

**Storage\*** -15°C to -25°C/1 year (Do not lower than -25°C)

**Formulation** Liquid in PBS containing 50% glycerol, 0.5% BSA and 0.02% sodium azide.

### Recommended Dilution Ratios

**IHC 1:100-1:300**

**IF 1:200-1:1000**

**ELISA 1:10000**

**Not yet tested in other applications.**

### Basic Information

**Clonality** Polyclonal

### Immunogen Information

**Immunogen** The antiserum was produced against synthesized peptide derived from human HMG14 around the phosphorylation site of Ser21. AA range:10-59

**Specificity** Phospho-HMG-14 (S21) Polyclonal Antibody detects endogenous levels of HMG-14 protein only when phosphorylated at S21. The name of modified sites may be influenced by many factors, such as species (the modified site was not originally found in human samples) and the change of protein sequence (the previous protein sequence is incomplete, and the protein sequence may be prolonged with the development of protein sequencing technology). When naming, we will use the "numbers" in historical reference to keep the sites consistent with the reports. The antibody binds to the following modification sequence (lowercase letters are modification sites):RRsAR

## Target Information

**Gene name** HMGN1

**Protein Name** Non-histone chromosomal protein HMG-14

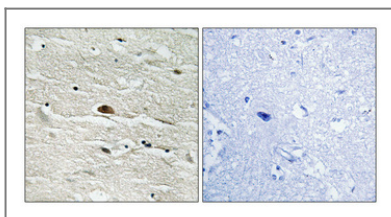
Organism	Gene ID	UniProt ID
Human	<a href="#">3150</a> ;	<a href="#">P05114</a> ;
Mouse	<a href="#">15312</a> ;	<a href="#">P18608</a> ;

**Cellular Localization** Nucleus. Cytoplasm. Cytoplasmic enrichment upon phosphorylation. The RNA edited version localizes to the nucleus.

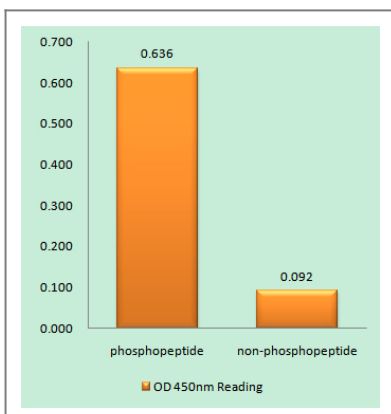
**Tissue specificity** Bone marrow,Brain,Epithelium,Liver,Ovary,Pooled,Skin,

**Function** Function: Binds to the inner side of the nucleosomal DNA thus altering the interaction between the DNA and the histone octamer. May be involved in the process which maintains transcribable genes in an unique chromatin conformation. Inhibits the phosphorylation of nucleosomal histones H3 and H2A by RPS6KA5/MSK1 and RPS6KA3/RSK2.,mass spectrometry: PubMed:10739259,PTM:Phosphorylation on Ser-21 and Ser-25 weakens binding to nucleosomes and increases the rate of H3 phosphorylation (By similarity). Phosphorylation favors cytoplasmic localization.,RNA editing:Partially edited. A new initiator methionine may be created by a single uridine insertion in the 5'-UTR, causing an N-terminal extension of 45 amino acids. The existence of the RNA edited version is supported by direct protein sequencing by MS/MS of the following peptides specific to that version: 23-31 and 40-48. The RNA edited version is called ET-HMGN1.,similarity:Belongs to the HMGN family.,subcellular location:Cytoplasmic enrichment upon phosphorylation. The RNA edited version localizes to the nucleus.,

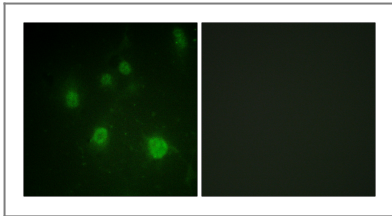
## Validation Data



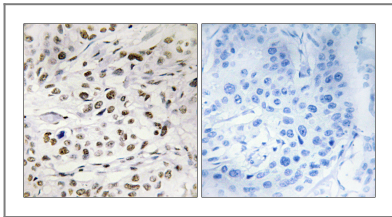
Immunohistochemical analysis of paraffin-embedded Human brain. Antibody was diluted at 1:100(4° overnight). High-pressure and temperature Tris-EDTA,pH8.0 was used for antigen retrieval. Negative control (right) obtained from antibody was pre-absorbed by immunogen peptide.



Enzyme-Linked Immunosorbent Assay (Phospho-ELISA) for Immunogen Phosphopeptide (Phospho-left) and Non-Phosphopeptide (Phospho-right), using HMG14 (Phospho-Ser21) Antibody



Immunofluorescence analysis of COS7 cells, using HMG14 (Phospho-Ser21) Antibody. The picture on the right is blocked with the phospho peptide.



Immunohistochemistry analysis of paraffin-embedded human breast carcinoma, using HMG14 (Phospho-Ser21) Antibody. The picture on the right is blocked with the phospho peptide.

## Contact information

Orders: [order@immunoway.com](mailto:order@immunoway.com)  
Support: [tech@immunoway.com](mailto:tech@immunoway.com)  
Telephone: 877-594-3616 (Toll Free), 408-747-0185  
Website: <http://www.immunoway.com>  
Address: 2200 Ringwood Ave San Jose, CA 95131 USA



Please scan the QR code to access additional product information:  
**HMG-14 (Phospho Ser21) Rabbit pAb**

For Research Use Only. Not for Use in Diagnostic Procedures.

[Antibody](#) | [ELISA Kits](#) | [Protein](#) | [Reagents](#)