

APC1 (Phospho Ser688) Rabbit pAb

CatalogNo: YP1152

Key Features

Host Species

- Rabbit

Reactivity

- Human, Mouse, Rat

Applications

- WB, IHC, IF, ELISA

MW

- 217kD (Calculated)

Isotype

- IgG

Storage

Storage* -15°C to -25°C/1 year (Do not lower than -25°C)

Formulation Liquid in PBS containing 50% glycerol, 0.5% BSA and 0.02% sodium azide.

Recommended Dilution Ratios

WB 1:500-2000

IHC 1:100-1:300

IF 1:200-1:1000

ELISA 1:10000

Not yet tested in other applications.

Basic Information

Clonality Polyclonal

Immunogen Information

Immunogen The antiserum was produced against synthesized peptide derived from human APC1 around the phosphorylation site of Ser688. AA range: 654-703

Specificity

Phospho-APC1 (S688) Polyclonal Antibody detects endogenous levels of APC1 protein only when phosphorylated at S688. The name of modified sites may be influenced by many factors, such as species (the modified site was not originally found in human samples) and the change of protein sequence (the previous protein sequence is incomplete, and the protein sequence may be prolonged with the development of protein sequencing technology). When naming, we will use the "numbers" in historical reference to keep the sites consistent with the reports. The antibody binds to the following modification sequence (lowercase letters are modification sites):SLSPV

Target Information

Gene name ANAPC1

Protein Name Anaphase-promoting complex subunit 1

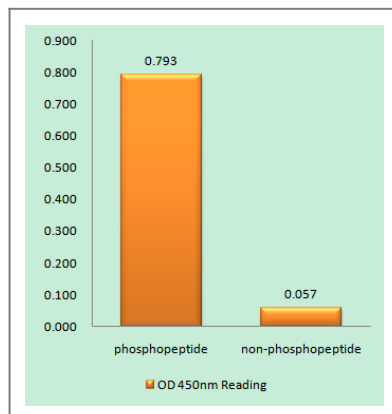
Organism	Gene ID	UniProt ID
Human	64682 ;	Q9H1A4 ;
Mouse	17222 ;	P53995 ;

Cellular Localization nucleoplasm,anaphase-promoting complex,cytosol,

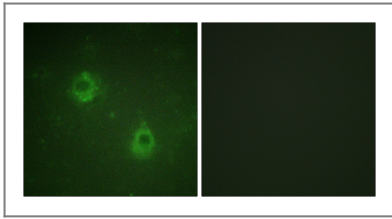
Tissue specificity Colon,Epithelium,Ovary,Placenta,

Function Function:Component of the anaphase promoting complex/cyclosome (APC/C), a cell cycle-regulated E3 ubiquitin ligase that controls progression through mitosis and the G1 phase of the cell cycle.,pathway:Protein modification; protein ubiquitination.,PTM:Phosphorylated. Phosphorylation on Ser-355 occurs specifically during mitosis.,similarity:Belongs to the APC1 family.,similarity:Contains 4 PC repeats.,subunit:The APC/C is composed of at least 11 subunits.,

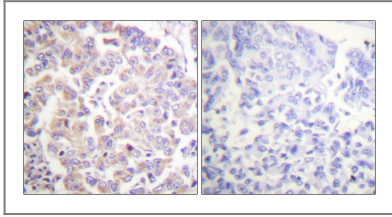
Validation Data



Enzyme-Linked Immunosorbent Assay (Phospho-ELISA) for Immunogen Phosphopeptide (Phospho-left) and Non-Phosphopeptide (Phospho-right), using APC1 (Phospho-Ser688) Antibody



Immunofluorescence analysis of COS7 cells, using APC1 (Phospho-Ser688) Antibody. The picture on the right is blocked with the phospho peptide.



Immunohistochemistry analysis of paraffin-embedded human breast carcinoma, using APC1 (Phospho-Ser688) Antibody. The picture on the right is blocked with the phospho peptide.

Contact information

Orders: order@immunoway.com
Support: tech@immunoway.com
Telephone: 877-594-3616 (Toll Free), 408-747-0185
Website: <http://www.immunoway.com>
Address: 2200 Ringwood Ave San Jose, CA 95131 USA



Please scan the QR code to access additional product information:
APC1 (Phospho Ser688) Rabbit pAb

For Research Use Only. Not for Use in Diagnostic Procedures.

[Antibody](#) | [ELISA Kits](#) | [Protein](#) | [Reagents](#)