

Vinculin (Phospho Tyr821) Rabbit pAb

CatalogNo: YP1151

Orthogonal Validated 

Key Features

Host Species

- Rabbit

Reactivity

- Human, Mouse, Rat

Applications

- WB, IHC, IF, ELISA

MW

- 124kD (Calculated)

Isotype

- IgG

Recommended Dilution Ratios

WB 1:500-2000**IHC 1:100-1:300****IF 1:200-1:1000****ELISA 1:20000****Not yet tested in other applications.**

Storage

Storage* -15°C to -25°C/1 year (Do not lower than -25°C)**Formulation** Liquid in PBS containing 50% glycerol, 0.5% BSA and 0.02% sodium azide.

Basic Information

Clonality Polyclonal

Immunogen Information

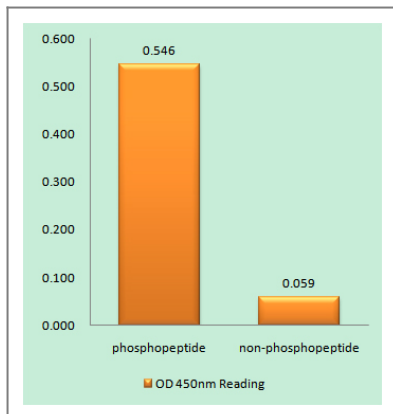
Immunogen The antiserum was produced against synthesized peptide derived from human Vinculin around the phosphorylation site of Tyr821. AA range: 786-835

Specificity Phospho-Vinculin (Y821) Polyclonal Antibody detects endogenous levels of Vinculin protein only when phosphorylated at Y821. The name of modified sites may be influenced by many factors, such as species (the modified site was not originally found in human samples) and the change of protein sequence (the previous protein sequence is incomplete, and the protein sequence may be prolonged with the development of protein sequencing technology). When naming, we will use the "numbers" in historical reference to keep the sites consistent with the reports. The antibody binds to the following modification sequence (lowercase letters are modification sites):SGyRI

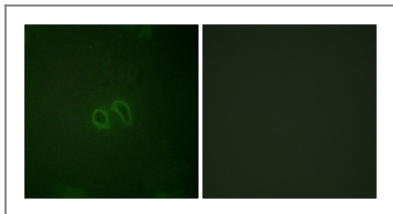
Target Information

Gene name	VCL												
Protein Name	Vinculin												
	<table><tr><th>Organism</th><th>Gene ID</th><th>UniProt ID</th></tr><tr><td>Human</td><td>7414;</td><td>P18206;</td></tr><tr><td>Mouse</td><td>22330;</td><td>Q64727;</td></tr><tr><td>Rat</td><td>305679;</td><td>P85972;</td></tr></table>	Organism	Gene ID	UniProt ID	Human	7414 ;	P18206 ;	Mouse	22330 ;	Q64727 ;	Rat	305679 ;	P85972 ;
Organism	Gene ID	UniProt ID											
Human	7414 ;	P18206 ;											
Mouse	22330 ;	Q64727 ;											
Rat	305679 ;	P85972 ;											
Cellular Localization	Cell membrane ; Peripheral membrane protein ; Cytoplasmic side . Cell junction, adherens junction . Cell junction, focal adhesion . Cytoplasm, cytoskeleton . Cell membrane, sarcolemma ; Peripheral membrane protein ; Cytoplasmic side . Recruitment to cell-cell junctions occurs in a myosin II-dependent manner. Interaction with CTNNB1 is necessary for its localization to the cell-cell junctions. .												
Tissue specificity	Metavinculin is muscle-specific.												
Function	Disease:Defects in VCL are the cause of cardiomyopathy dilated type 1W (CMD1W) [MIM:611407]. Dilated cardiomyopathy is a disorder characterized by ventricular dilation and impaired systolic function, resulting in congestive heart failure and arrhythmia. Patients are at risk of premature death.,Function:Involved in cell adhesion. May be involved in the attachment of the actin-based microfilaments to the plasma membrane. May also play important roles in cell morphology and locomotion.,online information:Vinculin entry,PTM:Aceylated; mainly by myristic acid but also small amount of palmitic acid.,PTM:Phosphorylated; on serines, threonines and tyrosines. Phosphorylation on Tyr-1133 in activated platelets affects head-tail interactions and cell spreading but has no effect on actin binding nor on localization to focal adhesion plaques.,similarity:Belongs to the vinculin/alpha-catenin family.,subcellular location:Cytoplasmic face of adhesion plaques.,subunit:Exhibits self-association properties. Interacts with NRAP and SORBS1 (By similarity). Interacts with TLN1. Interacts with SYNM.,tissue specificity:Metavinculin is muscle-specific.,												

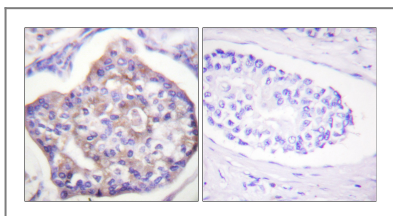
Validation Data



Enzyme-Linked Immunosorbent Assay (Phospho-ELISA) for Immunogen Phosphopeptide (Phospho-left) and Non-Phosphopeptide (Phospho-right), using Vinculin (Phospho-Tyr821) Antibody



Immunofluorescence analysis of HepG2 cells, using Vinculin (Phospho-Tyr821) Antibody. The picture on the right is blocked with the phosphopeptide.



Immunohistochemistry analysis of paraffin-embedded human breast carcinoma, using Vinculin (Phospho-Tyr821) Antibody. The picture on the right is blocked with the phosphopeptide.

Contact information

Orders: order@immunoway.com
 Support: tech@immunoway.com
 Telephone: 877-594-3616 (Toll Free), 408-747-0185
 Website: <http://www.immunoway.com>
 Address: 2200 Ringwood Ave San Jose, CA 95131 USA



Please scan the QR code to access additional product information:
Vinculin (Phospho Tyr821) Rabbit pAb

For Research Use Only. Not for Use in Diagnostic Procedures.

[Antibody](#) | [ELISA Kits](#) | [Protein](#) | [Reagents](#)