

## NMDAε1/2 (Phospho Tyr1246/1252) Rabbit pAb

CatalogNo: YP1147

### Key Features

#### Host Species

- Rabbit

#### Reactivity

- Human, Mouse, Rat

#### Applications

- WB, IHC, IF, ELISA

#### MW

- 170kD (Calculated)

#### Isotype

- IgG

### Recommended Dilution Ratios

**WB 1:500-2000**

**IHC 1:100-1:300**

**IF 1:200-1:1000**

**ELISA 1:10000**

**Not yet tested in other applications.**

### Storage

#### Storage\*

-15°C to -25°C/1 year (Do not lower than -25°C)

#### Formulation

Liquid in PBS containing 50% glycerol, 0.5% BSA and 0.02% sodium azide.

### Basic Information

#### Clonality

Polyclonal

### Immunogen Information

#### Immunogen

The antiserum was produced against synthesized peptide derived from human NMDAR2A/B around the phosphorylation site of Tyr1246/1252. AA range: 1216-1265

**Specificity** This antibody detects endogenous levels of NMDAε1/2 only when phosphorylated at Human:Y1246/Y1252, Mouse:Y1246/Y1252, Rat:Y1246/Y1252..The name of modified sites may be influenced by many factors, such as species (the modified site was not originally found in human samples) and the change of protein sequence (the previous protein sequence is incomplete, and the protein sequence may be prolonged with the development of protein sequencing technology). When naming, we will use the "numbers" in historical reference to keep the sites consistent with the reports. The antibody binds to the following modification sequence (lowercase letters are modification sites):NLyDI

| Target Information

**Gene name** GRIN2A/GRIN2B

**Protein Name** Glutamate [NMDA] receptor subunit epsilon-1/2

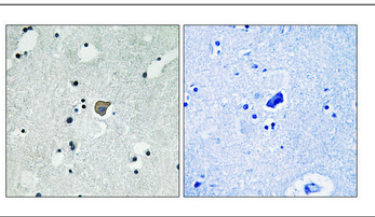
Organism	Gene ID	UniProt ID
Human	<a href="#">2903</a> ; <a href="#">2904</a> ;	<a href="#">Q12879</a> ; <a href="#">Q13224</a> ;
Mouse	<a href="#">14811</a> ; <a href="#">14812</a> ;	
Rat	<a href="#">24409</a> ; <a href="#">24410</a> ;	<a href="#">Q00959</a> ; <a href="#">Q00960</a> ;

**Cellular Localization** Cell projection, dendritic spine . Cell membrane ; Multi-pass membrane protein . Cell junction, synapse . Cell junction, synapse, postsynaptic cell membrane ; Multi-pass membrane protein . Cytoplasmic vesicle membrane . Expression at the dendrite cell membrane and at synapses is regulated by SORCS2 and the retromer complex. .

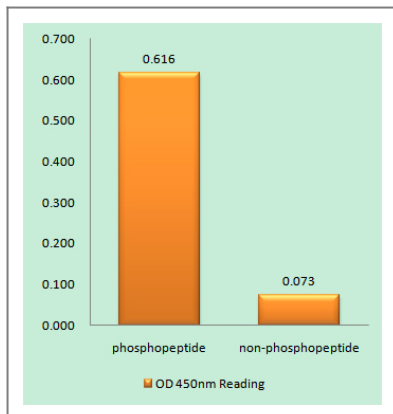
**Tissue specificity** Brain,Cerebellum,Epithelium,Hippocampus,

**Function** Function:NMDA receptor subtype of glutamate-gated ion channels possesses high calcium permeability and voltage-dependent sensitivity to magnesium. Activation requires binding of agonist to both types of subunits.,similarity:Belongs to the glutamate-gated ion channel (TC 1.A.10) family.,subunit:Forms heteromeric channel of a zeta subunit (GRIN1), a epsilon subunit (GRIN2A, GRIN2B, GRIN2C or GRIN2D) and a third subunit (GRIN3A or GRIN3B). Found in a complex with GRIN1 and GRIN3B. Found in a complex with GRIN1, GRIN3A and PPP2CB. Interacts with PDZ domains of AIP1, INADL and DLG4. Interacts with HIP1.,

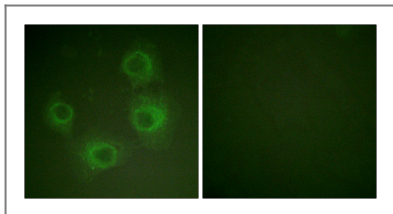
| Validation Data



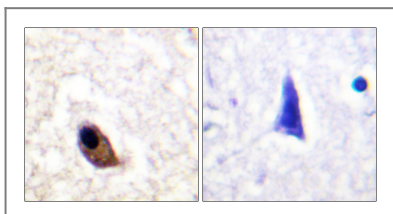
Immunohistochemical analysis of paraffin-embedded Human brain. Antibody was diluted at 1:100(4° overnight). High-pressure and temperature Tris-EDTA,pH8.0 was used for antigen retrieval. Negative contrl (right) obtained from antibody was pre-absorbed by immunogen peptide.



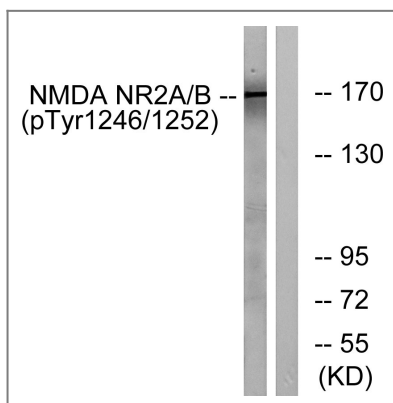
Enzyme-Linked Immunosorbent Assay (Phospho-ELISA) for Immunogen Phosphopeptide (Phospho-left) and Non-Phosphopeptide (Phospho-right), using NMDAR2A/B (Phospho-Tyr1246/1252) Antibody



Immunofluorescence analysis of HUVEC cells, using NMDAR2A/B (Phospho-Tyr1246/1252) Antibody. The picture on the right is blocked with the phosphopeptide.



Immunohistochemistry analysis of paraffin-embedded human brain, using NMDAR2A/B (Phospho-Tyr1246/1252) Antibody. The picture on the right is blocked with the phosphopeptide.



Western blot analysis of NMDAR2A/B (Phospho-Tyr1246/1252) Antibody. The lane on the right is blocked with the NMDAR2A/B (Phospho-Tyr1246/1252) peptide.

## Contact information

Orders: order@immunoway.com  
 Support: tech@immunoway.com  
 Telephone: 877-594-3616 (Toll Free), 408-747-0185  
 Website: <http://www.immunoway.com>  
 Address: 2200 Ringwood Ave San Jose, CA 95131 USA



Please scan the QR code to access additional product information:  
**NMDAε1/2 (Phospho Tyr1246/1252) Rabbit pAb**