

## HSP20 (Phospho Ser16) Rabbit pAb

CatalogNo: YP1130

### Key Features

#### Host Species

- Rabbit

#### Reactivity

- Human, Mouse, Rat

#### Applications

- IHC, IF, ELISA

#### MW

- 17kD (Calculated)

#### Isotype

- IgG

### Storage

**Storage\*** -15°C to -25°C/1 year (Do not lower than -25°C)

**Formulation** Liquid in PBS containing 50% glycerol, 0.5% BSA and 0.02% sodium azide.

### Recommended Dilution Ratios

**IHC 1:100-1:300**

**IF 1:200-1:1000**

**ELISA 1:5000**

**Not yet tested in other applications.**

### Basic Information

**Clonality** Polyclonal

### Immunogen Information

**Immunogen** The antiserum was produced against synthesized peptide derived from human HSP20 around the phosphorylation site of Ser16. AA range:5-54

**Specificity** Phospho-HSP20 (S16) Polyclonal Antibody detects endogenous levels of HSP20 protein only when phosphorylated at S16. The name of modified sites may be influenced by many factors, such as species (the modified site was not originally found in human samples) and the change of protein sequence (the previous protein sequence is incomplete, and the protein sequence may be prolonged with the development of protein sequencing technology). When naming, we will use the "numbers" in historical reference to keep the sites consistent with the reports. The antibody binds to the following modification sequence (lowercase letters are modification sites):RASAP

## Target Information

**Gene name** HSPB6

**Protein Name** Heat shock protein beta-6

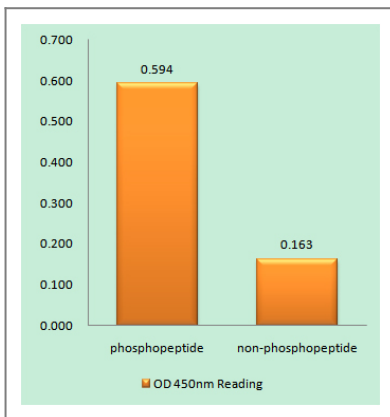
Organism	Gene ID	UniProt ID
Human	<a href="#">126393</a> ;	<a href="#">O14558</a> ;
Mouse	<a href="#">243912</a> ;	<a href="#">Q5EBG6</a> ;
Rat	<a href="#">192245</a> ;	<a href="#">P97541</a> ;

**Cellular Localization** Cytoplasm . Nucleus . Secreted . Translocates to nuclear foci during heat shock. .

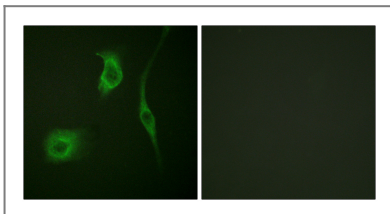
**Tissue specificity** Muscle,Skeletal muscle,Skin,

**Function** PTM:The N-terminus is blocked.,similarity:Belongs to the small heat shock protein (HSP20) family.,subunit:May exist as disulfide-linked dimer and monomer.,

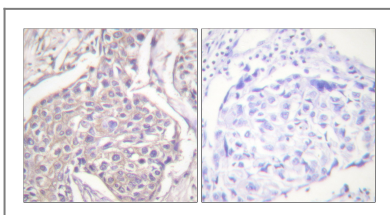
## Validation Data



Enzyme-Linked Immunosorbent Assay (Phospho-ELISA) for Immunogen Phosphopeptide (Phospho-left) and Non-Phosphopeptide (Phospho-right), using HSP20 (Phospho-Ser16) Antibody



Immunofluorescence analysis of HeLa cells, using HSP20 (Phospho-Ser16) Antibody. The picture on the right is blocked with the phospho peptide.



Immunohistochemistry analysis of paraffin-embedded human breast carcinoma, using HSP20 (Phospho-Ser16) Antibody. The picture on the right is blocked with the phospho peptide.

## | Contact information

Orders: order@immunoway.com  
Support: tech@immunoway.com  
Telephone: 877-594-3616 (Toll Free), 408-747-0185  
Website: <http://www.immunoway.com>  
Address: 2200 Ringwood Ave San Jose, CA 95131 USA



Please scan the QR code to access additional product information:  
**HSP20 (Phospho Ser16) Rabbit pAb**

---

For Research Use Only. Not for Use in Diagnostic Procedures.

[Antibody](#) | [ELISA Kits](#) | [Protein](#) | [Reagents](#)