

ERF (Phospho Thr526) Rabbit pAb

CatalogNo: YP1129

Key Features

Host Species

- Rabbit

Reactivity

- Human, Mouse

Applications

- WB, IHC, IF, ELISA

MW

- 58kD (Observed)

Isotype

- IgG

Storage

Storage* -15°C to -25°C/1 year (Do not lower than -25°C)

Formulation Liquid in PBS containing 50% glycerol, 0.5% BSA and 0.02% sodium azide.

Recommended Dilution Ratios

WB 1:500-1:2000

IHC 1:100-1:300

IF 1:200-1:1000

ELISA 1:20000

Not yet tested in other applications.

Basic Information

Clonality Polyclonal

Immunogen Information

Immunogen The antiserum was produced against synthesized peptide derived from human ERF around the phosphorylation site of Thr526. AA range: 492-541

Specificity

Phospho-ERF (T526) Polyclonal Antibody detects endogenous levels of ERF protein only when phosphorylated at T526. The name of modified sites may be influenced by many factors, such as species (the modified site was not originally found in human samples) and the change of protein sequence (the previous protein sequence is incomplete, and the protein sequence may be prolonged with the development of protein sequencing technology). When naming, we will use the "numbers" in historical reference to keep the sites consistent with the reports. The antibody binds to the following modification sequence (lowercase letters are modification sites):PLTPR

| Target Information

Gene name ERF

Protein Name ETS domain-containing transcription factor ERF

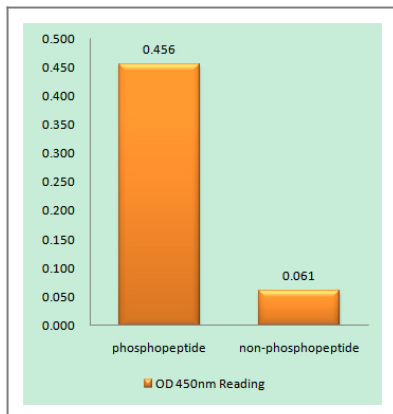
Organism	Gene ID	UniProt ID
Human	2077;	P50548;
Mouse	13875;	P70459;

Cellular Localization Nucleus.

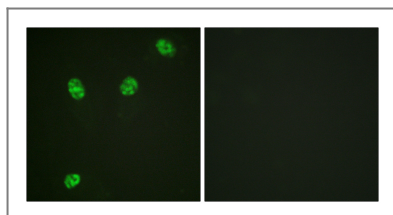
Tissue specificity Highest levels in testis, ovary, pancreas, and heart.

Function Function: Potent transcriptional repressor that binds to the H1 element of the Ets2 promoter. May regulate other genes involved in cellular proliferation. Required for extraembryonic ectoderm differentiation, ectoplacental cone cavity closure, and chorioallantoic attachment (By similarity). May be important for regulating trophoblast stem cell differentiation.,PTM: Phosphorylated by multiple kinases including probably ERK2. Phosphorylation regulates the activity of ERF.,sequence Caution: The sequence differs from that shown because it seems to be derived from a pre-mRNA.,similarity: Belongs to the ETS family.,similarity: Contains 1 ETS DNA-binding domain.,tissue specificity: Highest levels in testis, ovary, pancreas, and heart.,

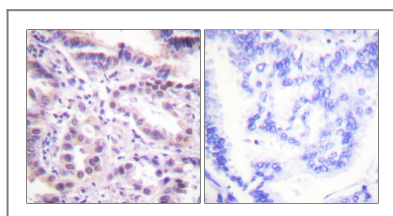
| Validation Data



Enzyme-Linked Immunosorbent Assay (Phospho-ELISA) for Immunogen Phosphopeptide (Phospho-left) and Non-Phosphopeptide (Phospho-right), using ERF (Phospho-Thr526) Antibody



Immunofluorescence analysis of HeLa cells, using ERF (Phospho-Thr526) Antibody. The picture on the right is blocked with the phospho peptide.



Immunohistochemistry analysis of paraffin-embedded human lung carcinoma, using ERF (Phospho-Thr526) Antibody. The picture on the right is blocked with the phospho peptide.

Contact information

Orders: order@immunoway.com
 Support: tech@immunoway.com
 Telephone: 877-594-3616 (Toll Free), 408-747-0185
 Website: <http://www.immunoway.com>
 Address: 2200 Ringwood Ave San Jose, CA 95131 USA



Please scan the QR code to access additional product information:
ERF (Phospho Thr526) Rabbit pAb

For Research Use Only. Not for Use in Diagnostic Procedures.

[Antibody](#) | [ELISA Kits](#) | [Protein](#) | [Reagents](#)