

MARCKS (Phospho Ser163) Rabbit pAb

CatalogNo: YP1127

Key Features

Host Species

- Rabbit

Reactivity

- Human, Mouse, Rat

Applications

- IHC, IF, ELISA

MW

- 32kD (Calculated)

Isotype

- IgG

Recommended Dilution Ratios

IHC 1:100-1:300**ELISA 1:10000****IF 1:50-200**

Storage

Storage*

-15°C to -25°C/1 year(Do not lower than -25°C)

Formulation

Liquid in PBS containing 50% glycerol, 0.5% BSA and 0.02% sodium azide.

Basic Information

Clonality

Polyclonal

Immunogen Information

Immunogen

The antiserum was produced against synthesized peptide derived from human MARCKS around the phosphorylation site of Ser163. AA range:136-185

Specificity

Phospho-MARCKS (S163) Polyclonal Antibody detects endogenous levels of MARCKS protein only when phosphorylated at S163. The name of modified sites may be influenced by many factors, such as species (the modified site was not originally found in human samples) and the change of protein sequence (the previous protein sequence is incomplete, and the protein sequence may be prolonged with the development of protein sequencing technology). When naming, we will use the "numbers" in historical reference to keep the sites consistent with the reports. The antibody binds to the following modification sequence (lowercase letters are modification sites):KKsFK

| Target Information

Gene name MARCKS

Protein Name Myristoylated alanine-rich C-kinase substrate

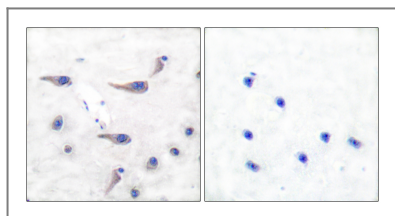
Organism	Gene ID	UniProt ID
Human	4082;	P29966;
Mouse	17118;	P26645;
Rat		P30009;

Cellular Localization Cytoplasm, cytoskeleton . Membrane ; Lipid-anchor .

Tissue specificity Blood,Brain,Epithelium,Muscle,Skin,

Function Function:MARCKS is the most prominent cellular substrate for protein kinase C. This protein binds calmodulin, actin, and synapsin. MARCKS is a filamentous (F) actin cross-linking protein.,PTM:Phosphorylation by PKC displaces MARCKS from the membrane. It also inhibits the F-actin cross-linking activity.,similarity:Belongs to the MARCKS family.,

| Validation Data



Immunohistochemistry analysis of paraffin-embedded human brain, using MARCKS (Phospho-Ser163) Antibody. The picture on the right is blocked with the phospho peptide.

| Contact information

Orders: order@immunoway.com
Support: tech@immunoway.com
Telephone: 877-594-3616 (Toll Free), 408-747-0185
Website: <http://www.immunoway.com>
Address: 2200 Ringwood Ave San Jose, CA 95131 USA



Please scan the QR code to access additional product information:
MARCKS (Phospho Ser163) Rabbit pAb