

# TIRAP (Phospho Tyr86) Rabbit pAb

CatalogNo: YP1112

## Key Features

### Host Species

- Rabbit

### Reactivity

- Human, Mouse

### Applications

- WB, IHC, IF, ELISA

### MW

- 24kD (Calculated)

### Isotype

- IgG

## Storage

**Storage\*** -15°C to -25°C/1 year (Do not lower than -25°C)

**Formulation** Liquid in PBS containing 50% glycerol, 0.5% BSA and 0.02% sodium azide.

## Recommended Dilution Ratios

**WB 1:500-2000**

**IHC 1:100-1:300**

**ELISA 1:5000**

**IF 1:50-200**

## Basic Information

**Clonality** Polyclonal

## Immunogen Information

**Immunogen** The antiserum was produced against synthesized peptide derived from human TIRAP around the phosphorylation site of Tyr86. AA range:52-101

**Specificity** Phospho-TIRAP (Y86) Polyclonal Antibody detects endogenous levels of TIRAP protein only when phosphorylated at Y86. The name of modified sites may be influenced by many factors, such as species (the modified site was not originally found in human samples) and the change of protein sequence (the previous protein sequence is incomplete, and the protein sequence may be prolonged with the development of protein sequencing technology). When naming, we will use the "numbers" in historical reference to keep the sites consistent with the reports. The antibody binds to the following modification sequence (lowercase letters are modification sites):KDYDV

## Target Information

**Gene name** TIRAP

**Protein Name** Toll/interleukin-1 receptor domain-containing adapter protein

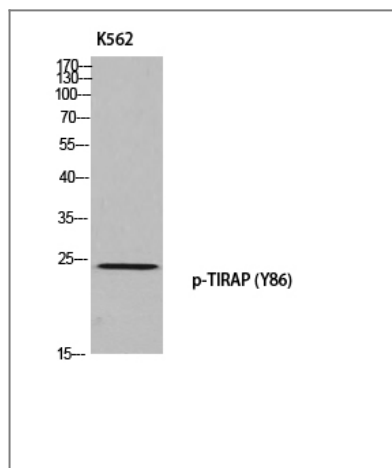
| Organism | Gene ID                  | UniProt ID               |
|----------|--------------------------|--------------------------|
| Human    | <a href="#">114609</a> ; | <a href="#">P58753</a> ; |
| Mouse    | <a href="#">117149</a> ; | <a href="#">Q99JY1</a> ; |

**Cellular Localization** Cytoplasm . Cell membrane . Membrane . Colocalizes with DAB2IP at the plasma membrane.

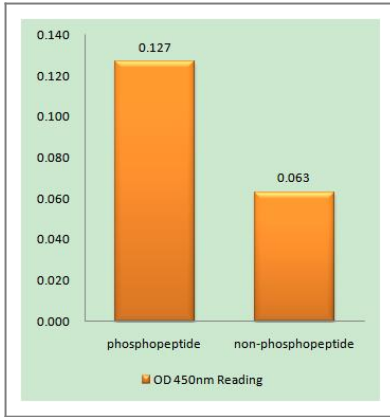
**Tissue specificity** Highly expressed in liver, kidney, spleen, skeletal muscle and heart. Also detected in peripheral blood leukocytes, lung, placenta, small intestine, thymus, colon and brain.

**Function** Function:Adapter involved in the TLR4 signaling pathway in the innate immune response. Acts via IRAK2 and TRAF-6, leading to the activation of NF-kappa-B, MAPK1, MAPK3 and JNK, resulting in cytokine secretion and the inflammatory response.,polymorphism:Genetic variation in TIRAP can influence susceptibility or resistance to invasive pneumococcal disease, bacteremia, malaria and tuberculosi.,similarity:Contains 1 TIR domain.,subunit:Homodimer. Also forms heterodimers with MyD88. Binds to TLR4 and IRAK2 via their respective TIR domains. Binds to PKR and TBK1. Does not interact with IRAK1, nor TLR9.,tissue specificity:Highly expressed in liver, kidney, spleen, skeletal muscle and heart. Also detected in peripheral blood leukocytes, lung, placenta, small intestine, thymus, colon and brain.,

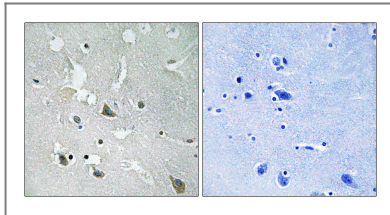
## Validation Data



Western blot analysis of K562 using p-TIRAP (Y86) antibody.



Enzyme-Linked Immunosorbent Assay (Phospho-ELISA) for Immunogen Phosphopeptide (Phospho-left) and Non-Phosphopeptide (Phospho-right), using TIRAP (Phospho-Tyr86) Antibody



Immunohistochemistry analysis of paraffin-embedded human brain, using TIRAP (Phospho-Tyr86) Antibody. The picture on the right is blocked with the phospho peptide.

## Contact information

Orders: [order@immunoway.com](mailto:order@immunoway.com)  
 Support: [tech@immunoway.com](mailto:tech@immunoway.com)  
 Telephone: 877-594-3616 (Toll Free), 408-747-0185  
 Website: <http://www.immunoway.com>  
 Address: 2200 Ringwood Ave San Jose, CA 95131 USA



Please scan the QR code to access additional product information:  
**TIRAP (Phospho Tyr86) Rabbit pAb**

For Research Use Only. Not for Use in Diagnostic Procedures.

[Antibody](#) | [ELISA Kits](#) | [Protein](#) | [Reagents](#)