

# SphK2 (Phospho Thr614) Rabbit pAb

CatalogNo: YP1108

## Key Features

### Host Species

- Rabbit

### Reactivity

- Human, Mouse, Rat

### Applications

- IHC, IF, WB, ELISA

### MW

- 69kD (Calculated)

### Isotype

- IgG

## Storage

**Storage\*** -15°C to -25°C/1 year (Do not lower than -25°C)

**Formulation** Liquid in PBS containing 50% glycerol, 0.5% BSA and 0.02% sodium azide.

## Recommended Dilution Ratios

**WB 1:500-2000**

**IHC 1:100-1:300**

**ELISA 1:5000**

**IF 1:50-200**

## Basic Information

**Clonality** Polyclonal

## Immunogen Information

**Immunogen** The antiserum was produced against synthesized peptide derived from human SPHK2 around the phosphorylation site of Thr614. AA range:580-629

**Specificity** Phospho-SphK2 (T614) Polyclonal Antibody detects endogenous levels of SphK2 protein only when phosphorylated at T614. The name of modified sites may be influenced by many factors, such as species (the modified site was not originally found in human samples) and the change of protein sequence (the previous protein sequence is incomplete, and the protein sequence may be prolonged with the development of protein sequencing technology). When naming, we will use the "numbers" in historical reference to keep the sites consistent with the reports. The antibody binds to the following modification sequence (lowercase letters are modification sites): PLtPR

## Target Information

**Gene name** SPHK2

**Protein Name** Sphingosine kinase 2

Organism	Gene ID	UniProt ID
Human	<a href="#">56848</a> ;	<a href="#">Q9NRA0</a> ;
Mouse	<a href="#">56632</a> ;	<a href="#">Q9JIA7</a> ;

### Cellular Localization

Cytoplasm . Nucleus . Endoplasmic reticulum . Mitochondrion inner membrane . In nucleus, located in nucleosomes where it associates with core histone proteins such as histone 3 (PubMed:19729656). In brains of patients with Alzheimer's disease, may be preferentially localized in the nucleus. Cytosolic expression decrease correlates with the density of amyloid deposits (PubMed:29615132). In apoptotic cells, colocalizes with CASP1 in cell membrane where is cleaved and released from cells in an active form (PubMed:20197547). .; [Isoform 2]: Lysosome membrane .

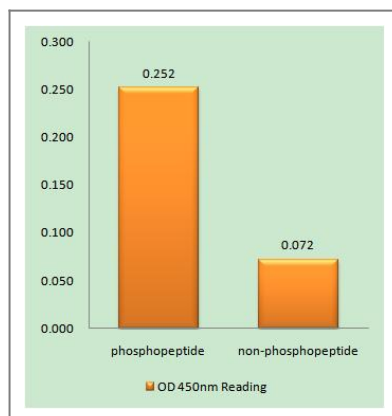
### Tissue specificity

Mainly expressed in adult kidney, liver, and brain (PubMed:10751414). Expressed in cerebral cortex and hippocampus (at protein level) (PubMed:29615132). Isoform 1 is the predominant form expressed in most tissues (PubMed:16103110).

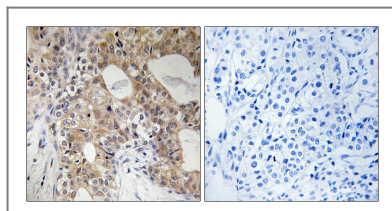
### Function

Alternative products:Experimental confirmation may be lacking for some isoforms,Catalytic activity:ATP + sphinganine = ADP + sphinganine 1-phosphate.,Catalytic activity:ATP + sphingosine = ADP + sphingosine 1-phosphate.,cofactor:Magnesium.,Function:Catalyzes the phosphorylation of sphingosine to form sphingosine 1-phosphate (SPP), a lipid mediator with both intra-and extracellular functions. Also acts on D-erythro-dihydrosphingosine, D-erythro-sphingosine and L-threo-dihydrosphingosine.,similarity:Contains 1 DAGKc domain.,

## Validation Data



Enzyme-Linked Immunosorbent Assay (Phospho-ELISA) for Immunogen Phosphopeptide (Phospho-left) and Non-Phosphopeptide (Phospho-right), using SPHK2 (Phospho-Thr614) Antibody



Immunohistochemistry analysis of paraffin-embedded human breast carcinoma, using SPHK2 (Phospho-Thr614) Antibody. The picture on the right is blocked with the phospho peptide.

## | Contact information

Orders: order@immunoway.com  
Support: tech@immunoway.com  
Telephone: 877-594-3616 (Toll Free), 408-747-0185  
Website: <http://www.immunoway.com>  
Address: 2200 Ringwood Ave San Jose, CA 95131 USA



Please scan the QR code to access additional product information:  
**SphK2 (Phospho Thr614) Rabbit pAb**

---

For Research Use Only. Not for Use in Diagnostic Procedures.

[Antibody](#) | [ELISA Kits](#) | [Protein](#) | [Reagents](#)