

c-Myb (Phospho Ser532) Rabbit pAb

CatalogNo: YP1102

Key Features

Host Species

- Rabbit

Reactivity

- Human, Mouse

Applications

- IHC, IF, ELISA

MW

- 72kD (Calculated)

Isotype

- IgG

Storage

Storage* -15°C to -25°C/1 year (Do not lower than -25°C)

Formulation Liquid in PBS containing 50% glycerol, 0.5% BSA and 0.02% sodium azide.

Recommended Dilution Ratios

IHC 1:100-1:300

ELISA 1:5000

IF 1:50-200

Basic Information

Clonality Polyclonal

Immunogen Information

Immunogen The antiserum was produced against synthesized peptide derived from human Myb around the phosphorylation site of Ser532. AA range: 496-545

Specificity Phospho-c-Myb (S532) Polyclonal Antibody detects endogenous levels of c-Myb protein only when phosphorylated at S532. The name of modified sites may be influenced by many factors, such as species (the modified site was not originally found in human samples) and the change of protein sequence (the previous protein sequence is incomplete, and the protein sequence may be prolonged with the development of protein sequencing technology). When naming, we will use the "numbers" in historical reference to keep the sites consistent with the reports. The antibody binds to the following modification sequence (lowercase letters are modification sites): VESPT

Target Information

Gene name MYB

Protein Name Transcriptional activator Myb

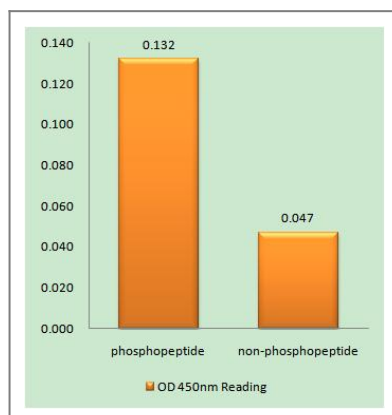
Organism	Gene ID	UniProt ID
Human	4602 ;	P10242 ;
Mouse	17863 ;	P06876 ;

Cellular Localization Nucleus .

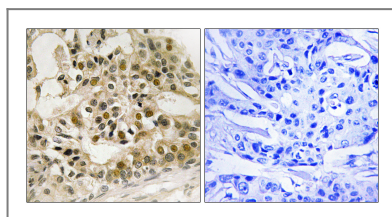
Tissue specificity Liver,Placenta,Testis,

Function Domain:Comprised of 3 domains; an N-terminal DNA-binding domain, a centrally located transcriptional activation domain and a C-terminal domain involved in transcriptional repression.,Function:Transcriptional activator; DNA-binding protein that specifically recognize the sequence 5'-YAAC[GT]G-3'. Plays an important role in the control of proliferation and differentiation of hematopoietic progenitor cells.,PTM:Phosphorylated by NLK on multiple sites, which induces proteasomal degradation.,PTM:Ubiquitinated; mediated by SIAH1 and leading to its subsequent proteasomal degradation.,similarity:Contains 3 HTH myb-type DNA-binding domains.,subunit:Binds MYBBP1A. Interacts with HIPK2, MAF and NLK.,

Validation Data



Enzyme-Linked Immunosorbent Assay (Phospho-ELISA) for Immunogen Phosphopeptide (Phospho-left) and Non-Phosphopeptide (Phospho-right), using Myb (Phospho-Ser532) Antibody



Immunohistochemistry analysis of paraffin-embedded human breast carcinoma, using Myb (Phospho-Ser532) Antibody. The picture on the right is blocked with the phospho peptide.

| Contact information

Orders: order@immunoway.com
Support: tech@immunoway.com
Telephone: 877-594-3616 (Toll Free), 408-747-0185
Website: <http://www.immunoway.com>
Address: 2200 Ringwood Ave San Jose, CA 95131 USA



Please scan the QR code to access additional product information:
c-Myb (Phospho Ser532) Rabbit pAb

For Research Use Only. Not for Use in Diagnostic Procedures.

[Antibody](#) | [ELISA Kits](#) | [Protein](#) | [Reagents](#)