

Girdin (Phospho Ser1417) Rabbit pAb

CatalogNo: YP1096

Key Features

Host Species

- Rabbit

Reactivity

- Human, Mouse

Applications

- IHC, IF, ELISA

MW

- 216kD (Calculated)

Isotype

- IgG

Storage

Storage* -15°C to -25°C/1 year (Do not lower than -25°C)

Formulation Liquid in PBS containing 50% glycerol, 0.5% BSA and 0.02% sodium azide.

Recommended Dilution Ratios

IHC 1:100-1:300

ELISA 1:5000

IF 1:50-200

Basic Information

Clonality Polyclonal

Immunogen Information

Immunogen The antiserum was produced against synthesized peptide derived from human Girdin around the phosphorylation site of Ser1417. AA range: 1383-1432

Specificity Phospho-Girdin (S1417) Polyclonal Antibody detects endogenous levels of Girdin protein only when phosphorylated at S1417. The name of modified sites may be influenced by many factors, such as species (the modified site was not originally found in human samples) and the change of protein sequence (the previous protein sequence is incomplete, and the protein sequence may be prolonged with the development of protein sequencing technology). When naming, we will use the "numbers" in historical reference to keep the sites consistent with the reports. The antibody binds to the following modification sequence (lowercase letters are modification sites): QKsLT

Target Information

Gene name CCDC88A

Protein Name Girdin

Organism	Gene ID	UniProt ID
Human	55704 ;	Q3V6T2 ;
Mouse	108686 ;	Q5SNZ0 ;

Cellular Localization

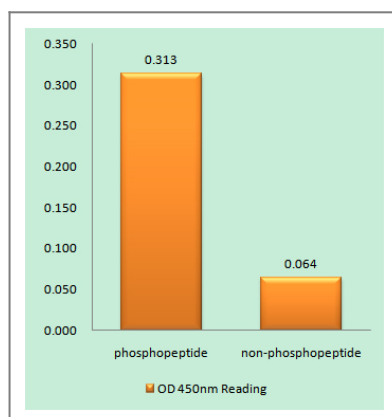
Cell membrane ; Peripheral membrane protein . Cytoplasm, cytosol . Cytoplasmic vesicle . Cell projection, lamellipodium . Cytoplasm, cytoskeleton, cilium basal body . Cytoplasm, cytoskeleton, microtubule organizing center, centrosome, centriole . Localizes to the cytosol in unstimulated cells while EGF stimulation promotes membrane localization and guanine nucleotide exchange factor activity (PubMed:27864364). Localizes to the cell membrane through interaction with phosphoinositides (PubMed:16139227, PubMed:15882442). .

Tissue specificity Expressed ubiquitously.

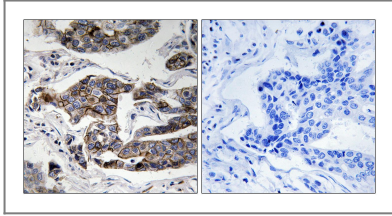
Function

Function:Enhances phosphoinositide 3-kinase (PI3K)-dependent phosphorylation and kinase activity of AKT1/PKB, but does not possess kinase activity itself. Phosphorylation of AKT1/PKB thereby induces the phosphorylation of downstream effectors GSK3 and FOXO1/FKHR, and regulates DNA replication and cell proliferation (By similarity). Essential for the integrity of the actin cytoskeleton and for cell migration. Required for formation of actin stress fibers and lamellipodia. May be involved in membrane sorting in the early endosome.,PTM:Phosphorylation is induced by epidermal growth factor (EGF) in a phosphoinositide 3-kinase (PI3K)-dependent manner. Phosphorylation by AKT1/PKB is necessary for the delocalization from the cell membrane and for cell migration.,sequence Caution:Intron retention at the C-terminus.,similarity:Belongs to the CCDC88 family.,subcellular location:Localizes to the cell membrane through interaction with phosphoinositides.,subunit:Homodimer. The non-phosphorylated form interacts with phosphatidylinositol 4-phosphate [PI(4)P] and weakly with phosphatidylinositol 3-phosphate [PI(3)P]. Interacts with microtubules. Interacts with actin through its C-terminal domain. Interacts with the C-terminus of AKT1/PKB.,tissue specificity:Expressed ubiquitously.,

Validation Data



Enzyme-Linked Immunosorbent Assay (Phospho-ELISA) for Immunogen Phosphopeptide (Phospho-left) and Non-Phosphopeptide (Phospho-right), using Girdin (Phospho-Ser1417) Antibody



Immunohistochemistry analysis of paraffin-embedded human breast carcinoma, using Girdin (Phospho-Ser1417) Antibody. The picture on the right is blocked with the phospho peptide.

Contact information

Orders: order@immunoway.com
Support: tech@immunoway.com
Telephone: 877-594-3616 (Toll Free), 408-747-0185
Website: <http://www.immunoway.com>
Address: 2200 Ringwood Ave San Jose, CA 95131 USA



Please scan the QR code to access additional product information:
Girdin (Phospho Ser1417) Rabbit pAb

For Research Use Only. Not for Use in Diagnostic Procedures.

[Antibody](#) | [ELISA Kits](#) | [Protein](#) | [Reagents](#)