

## eEF2K (Phospho Ser359) Rabbit pAb

CatalogNo: YP1093

### Key Features

**Host Species**

- Rabbit

**Reactivity**

- Human, Mouse, Rat

**Applications**

- IHC, IF, ELISA

**MW**

- 82kD (Calculated)

**Isotype**

- IgG

### Recommended Dilution Ratios

**IHC 1:100-1:300****ELISA 1:20000****IF 1:50-200**

### Storage

**Storage\***

-15°C to -25°C/1 year(Do not lower than -25°C)

**Formulation**

Liquid in PBS containing 50% glycerol, 0.5% BSA and 0.02% sodium azide.

### Basic Information

**Clonality**

Polyclonal

### Immunogen Information

**Immunogen**

The antiserum was produced against synthesized peptide derived from human eEF2K around the phosphorylation site of Ser359. AA range:336-385

**Specificity**

Phospho-eEF2K (S359) Polyclonal Antibody detects endogenous levels of eEF2K protein only when phosphorylated at S359. The name of modified sites may be influenced by many factors, such as species (the modified site was not originally found in human samples) and the change of protein sequence (the previous protein sequence is incomplete, and the protein sequence may be prolonged with the development of protein sequencing technology). When naming, we will use the "numbers" in historical reference to keep the sites consistent with the reports. The antibody binds to the following modification sequence (lowercase letters are modification sites):GsPRV

## | Target Information

**Gene name**           EEF2K

**Protein Name**       Eukaryotic elongation factor 2 kinase

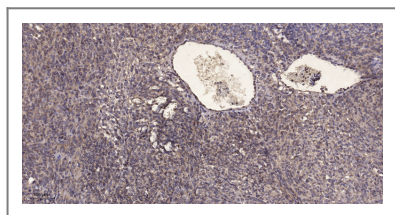
Organism	Gene ID	UniProt ID
Human	<a href="#">29904;</a>	<a href="#">O00418;</a>
Mouse	<a href="#">13631;</a>	<a href="#">O08796;</a>
Rat	<a href="#">25435;</a>	<a href="#">P70531;</a>

**Cellular Localization**       cytoplasm,cytosol,postsynaptic density,

**Tissue specificity** Epithelium,Glial tumor,Lymph,T-cell,

**Function**           Catalytic activity:ATP + [elongation factor 2] = ADP + [elongation factor 2] phosphate.,enzyme regulation:Undergoes calcium/calmodulin-dependent intramolecular autophosphorylation, and this results in it becoming partially calcium/calmodulin-independent.,Function:Phosphorylates eukaryotic elongation factor-2. Binds calmodulin.,similarity:Belongs to the protein kinase superfamily. Alpha-type protein kinase family.,similarity:Contains 1 alpha-type protein kinase domain.,subunit:Monomer or homodimer .,

## | Validation Data



Immunohistochemical analysis of paraffin-embedded human Colon cancer. 1, Antibody was diluted at 1:200(4° overnight). 2, Tris-EDTA,pH9.0 was used for antigen retrieval. 3,Secondary antibody was diluted at 1:200(room temperature, 45min).

## | Contact information

Orders:           order@immunoway.com  
Support:          tech@immunoway.com  
Telephone:       877-594-3616 (Toll Free), 408-747-0185  
Website:          http://www.immunoway.com  
Address:          2200 Ringwood Ave San Jose, CA 95131 USA



Please scan the QR code to access additional product information:  
**eEF2K (Phospho Ser359) Rabbit pAb**

