

CAD (Phospho Thr456) Rabbit pAb

CatalogNo: YP1083

Key Features

Host Species

- Rabbit

Reactivity

- Human, Mouse

Applications

- IHC, IF, ELISA

MW

- 243kD (Calculated)

Isotype

- IgG

Recommended Dilution Ratios

IHC 1:100-1:300**ELISA 1:5000****IF 1:50-200**

Storage

Storage*

-15°C to -25°C/1 year(Do not lower than -25°C)

Formulation

Liquid in PBS containing 50% glycerol, 0.5% BSA and 0.02% sodium azide.

Basic Information

Clonality

Polyclonal

Immunogen Information

Immunogen

The antiserum was produced against synthesized peptide derived from human CAD around the phosphorylation site of Thr456. AA range:422-471

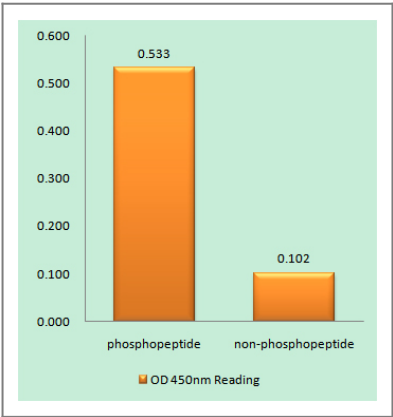
Specificity

Phospho-CAD (T456) Polyclonal Antibody detects endogenous levels of CAD protein only when phosphorylated at T456. The name of modified sites may be influenced by many factors, such as species (the modified site was not originally found in human samples) and the change of protein sequence (the previous protein sequence is incomplete, and the protein sequence may be prolonged with the development of protein sequencing technology). When naming, we will use the "numbers" in historical reference to keep the sites consistent with the reports. The antibody binds to the following modification sequence (lowercase letters are modification sites):PltPH

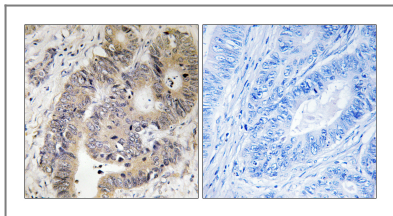
Target Information

Gene name	CAD		
Protein Name	CAD protein		
	Organism	Gene ID	UniProt ID
	Human	790 ;	P27708 ;
Cellular Localization	Cytoplasm . Nucleus . Cytosolic and unphosphorylated in resting cells, translocates to the nucleus in response to EGF stimulation, nuclear import promotes optimal cell growth.		
Tissue specificity	Colon adenocarcinoma,Epithe		
Function	Catalytic activity:(S)-dihydroorotate + H(2)O = N-carbamoyl-L-aspartate.,Catalytic activity:2 ATP + L-glutamine + HCO(3)(-) + H(2)O = 2 ADP + phosphate + L-glutamate + carbamoyl phosphate.,Catalytic activity:Carbamoyl phosphate + L-aspartate = phosphate + N-carbamoyl-L-aspartate.,cofactor:Binds 1 zinc ion per subunit (for dihydroorotase activity) .,enzyme regulation:Allosterically regulated and controlled by phosphorylation. 5-phosphoribose 1-diphosphate is an activator while UMP is an inhibitor of the CPSase reaction.,Function:This protein is a "fusion" protein encoding four enzymatic activities of the pyrimidine pathway (GATase, CPSase, ATCase and DHOase).,miscellaneous:GATase (glutamine amidotransferase) and CPSase (carbamoyl phosphate synthase) form together the glutamine-dependent CPSase (GD-CPSase) (EC 6.3.5.5).,online information:Aspartate carbamoyltransferase entry,pathway:Pyrimidine metabolism; UMP biosynthesis via de novo pathway; UMP from HCO(3)(-): step 1/6.,pathway:Pyrimidine metabolism; UMP biosynthesis via de novo pathway; UMP from HCO(3)(-): step 2/6.,pathway:Pyrimidine metabolism; UMP biosynthesis via de novo pathway; UMP from HCO(3)(-): step 3/6.,similarity:Belongs to the ATCase/OTCase family.,similarity:Contains 1 glutamine amidotransferase type-1 domain.,similarity:Contains 2 ATP-grasp domains.,similarity:In the central section; belongs to the DHOase family.,subunit:Homohexamer.,		

Validation Data



Enzyme-Linked Immunosorbent Assay (Phospho-ELISA) for Immunogen Phosphopeptide (Phospho-left) and Non-Phosphopeptide (Phospho-right), using CAD (Phospho-Thr456) Antibody



Immunohistochemistry analysis of paraffin-embedded human colon carcinoma, using CAD (Phospho-Thr456) Antibody. The picture on the right is blocked with the phospho peptide.

| Contact information

Orders: order@immunoway.com
Support: tech@immunoway.com
Telephone: 877-594-3616 (Toll Free), 408-747-0185
Website: <http://www.immunoway.com>
Address: 2200 Ringwood Ave San Jose, CA 95131 USA



Please scan the QR code to access additional product information:

CAD (Phospho Thr456) Rabbit pAb

For Research Use Only. Not for Use in Diagnostic Procedures.

[Antibody](#) | [ELISA Kits](#) | [Protein](#) | [Reagents](#)