

# APLP2 (Phospho Tyr755) Rabbit pAb

CatalogNo: YP1079

## Key Features

### Host Species

- Rabbit

### Reactivity

- Human, Mouse, Rat

### Applications

- IHC, IF, ELISA

### MW

- 87kD (Calculated)

### Isotype

- IgG

## Storage

**Storage\*** -15°C to -25°C/1 year (Do not lower than -25°C)

**Formulation** Liquid in PBS containing 50% glycerol, 0.5% BSA and 0.02% sodium azide.

## Recommended Dilution Ratios

IHC 1:100-1:300

ELISA 1:20000

IF 1:50-200

## Basic Information

**Clonality** Polyclonal

## Immunogen Information

**Immunogen** The antiserum was produced against synthesized peptide derived from human APLP2 around the phosphorylation site of Tyr755. AA range: 714-763

**Specificity** Phospho-APLP2 (Y755) Polyclonal Antibody detects endogenous levels of APLP2 protein only when phosphorylated at Y755. The name of modified sites may be influenced by many factors, such as species (the modified site was not originally found in human samples) and the change of protein sequence (the previous protein sequence is incomplete, and the protein sequence may be prolonged with the development of protein sequencing technology). When naming, we will use the "numbers" in historical reference to keep the sites consistent with the reports. The antibody binds to the following modification sequence (lowercase letters are modification sites): PTyKY

## Target Information

**Gene name** APLP2

**Protein Name** Amyloid-like protein 2

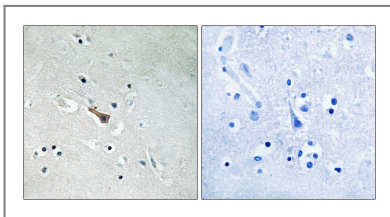
Organism	Gene ID	UniProt ID
Human	<a href="#">334</a> ;	<a href="#">Q06481</a> ;
Mouse	<a href="#">11804</a> ;	<a href="#">Q06335</a> ;
Rat		<a href="#">P15943</a> ;

**Cellular Localization** Cell membrane ; Single-pass type I membrane protein . Nucleus .

**Tissue specificity** Expressed in placenta, brain, heart, lung, liver, kidney and endothelial tissues.

**Function** Alternative products:Additional isoforms seem to exist,Function:May play a role in the regulation of hemostasis. The soluble form may have inhibitory properties towards coagulation factors. May interact with cellular G-protein signaling pathways. May bind to the DNA 5'-GTCACATG-3'(CDEI box). Inhibits trypsin, chymotrypsin, plasmin, factor XIA and plasma and glandular kallikrein.,PTM:The BPTI/Kunitz inhibitor domain is O-glycosylated.,similarity:Belongs to the APP family.,similarity:Contains 1 BPTI/Kunitz inhibitor domain.,subunit:Interacts with CPEB1.,tissue specificity:In placenta, brain, heart, lung, liver, kidney and endothelial tissues.,

## Validation Data



Immunohistochemistry analysis of paraffin-embedded human brain, using APLP2 (Phospho-Tyr755) Antibody. The picture on the right is blocked with the phospho peptide.

## Contact information

Orders: [order@immunoway.com](mailto:order@immunoway.com)  
Support: [tech@immunoway.com](mailto:tech@immunoway.com)  
Telephone: 877-594-3616 (Toll Free), 408-747-0185  
Website: <http://www.immunoway.com>  
Address: 2200 Ringwood Ave San Jose, CA 95131 USA



Please scan the QR code to access additional product information:  
**APLP2 (Phospho Tyr755) Rabbit pAb**

