

APLF (Phospho Ser116) Rabbit pAb

CatalogNo: YP1078

Key Features

Host Species

- Rabbit

Reactivity

- Human, Mouse

Applications

- IHC, IF, ELISA

MW

- 57kD (Calculated)

Isotype

- IgG

Storage

Storage* -15°C to -25°C/1 year (Do not lower than -25°C)

Formulation Liquid in PBS containing 50% glycerol, 0.5% BSA and 0.02% sodium azide.

Recommended Dilution Ratios

IHC 1:100-1:300

ELISA 1:5000

IF 1:50-200

Basic Information

Clonality Polyclonal

Immunogen Information

Immunogen The antiserum was produced against synthesized peptide derived from human APLF around the phosphorylation site of Ser116. AA range:82-131

Specificity Phospho-APLF (S116) Polyclonal Antibody detects endogenous levels of APLF protein only when phosphorylated at S116. The name of modified sites may be influenced by many factors, such as species (the modified site was not originally found in human samples) and the change of protein sequence (the previous protein sequence is incomplete, and the protein sequence may be prolonged with the development of protein sequencing technology). When naming, we will use the "numbers" in historical reference to keep the sites consistent with the reports. The antibody binds to the following modification sequence (lowercase letters are modification sites):RNsQV

Target Information

Gene name APLF

Protein Name Aprataxin and PNK-like factor

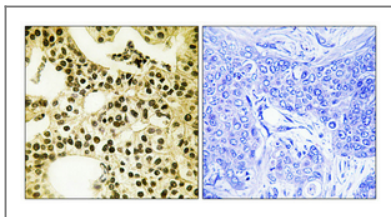
Organism	Gene ID	UniProt ID
Human	200558 ;	Q8IW19 ;
Mouse	72103 ;	Q9D842 ;

Cellular Localization Nucleus . Chromosome . Cytoplasm, cytosol . Localizes to DNA damage sites (PubMed:18474613, PubMed:18172500, PubMed:21211721, PubMed:23689425). Accumulates at single-strand breaks and double-strand breaks via the PBZ-type zinc fingers (PubMed:18172500). .

Tissue specificity Testis,

Function Domain:The FHA-like domain mediates interaction with XRCC1 and XRCC4.,Function:Involved in single-strand and double-strand DNA break repair.,PTM:Phosphorylated in an ATM-dependent manner upon double-strand DNA break.,similarity:Contains 1 FHA-like domain.,similarity:Contains 2 C2H2-type zinc fingers.,subcellular location:Colocalizes with XRCC1 at sites of DNA damage.,subunit:Interacts with XRCC1. May also interact with XRCC4 and XRCC5.,

Validation Data



Immunohistochemical analysis of paraffin-embedded Human breast cancer. Antibody was diluted at 1:100(4° overnight). High-pressure and temperature Tris-EDTA,pH8.0 was used for antigen retrieval. Negative contrl (right) obtained from antibody was pre-absorbed by immunogen peptide.

Contact information

Orders: order@immunoway.com
Support: tech@immunoway.com
Telephone: 877-594-3616 (Toll Free), 408-747-0185
Website: <http://www.immunoway.com>
Address: 2200 Ringwood Ave San Jose, CA 95131 USA



Please scan the QR code to access additional product information:
APLF (Phospho Ser116) Rabbit pAb