

## AIP4 (Phospho Tyr420) Rabbit pAb

CatalogNo: YP1072

### Key Features

#### Host Species

- Rabbit

#### Reactivity

- Human, Mouse

#### Applications

- IHC, IF, ELISA

#### MW

- 103kD (Calculated)

#### Isotype

- IgG

### Storage

**Storage\*** -15°C to -25°C/1 year (Do not lower than -25°C)

**Formulation** Liquid in PBS containing 50% glycerol, 0.5% BSA and 0.02% sodium azide.

### Recommended Dilution Ratios

**IHC 1:100-1:300**

**ELISA 1:20000**

**IF 1:50-200**

### Basic Information

**Clonality** Polyclonal

### Immunogen Information

**Immunogen** The antiserum was produced against synthesized peptide derived from human ITCH around the phosphorylation site of Tyr420. AA range:386-435

**Specificity** Phospho-AIP4 (Y420) Polyclonal Antibody detects endogenous levels of AIP4 protein only when phosphorylated at Y420. The name of modified sites may be influenced by many factors, such as species (the modified site was not originally found in human samples) and the change of protein sequence (the previous protein sequence is incomplete, and the protein sequence may be prolonged with the development of protein sequencing technology). When naming, we will use the "numbers" in historical reference to keep the sites consistent with the reports. The antibody binds to the following modification sequence (lowercase letters are modification sites): FlyGN

## Target Information

**Gene name** ITCH

**Protein Name** E3 ubiquitin-protein ligase Itchy homolog

Organism	Gene ID	UniProt ID
Human	<a href="#">83737</a> ;	<a href="#">Q96J02</a> ;
Mouse	<a href="#">16396</a> ;	<a href="#">Q8C863</a> ;

### Cellular Localization

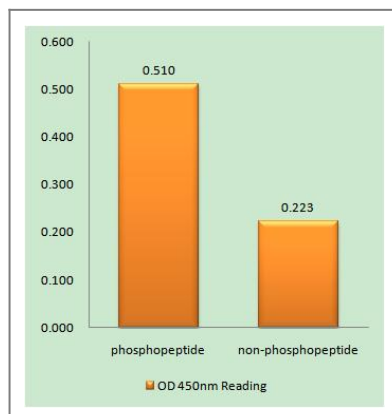
Cell membrane ; Peripheral membrane protein ; Cytoplasmic side . Cytoplasm . Nucleus . Early endosome membrane ; Peripheral membrane protein ; Cytoplasmic side . Endosome membrane ; Peripheral membrane protein ; Cytoplasmic side . May be recruited to exosomes by NDFIP1 (PubMed:18819914). Localizes to plasma membrane upon CXCL12 stimulation where it co-localizes with CXCL4 (PubMed:14602072). Localization to early endosomes is increased upon CXCL12 stimulation where it co-localizes with DTX3L and CXCL4 (PubMed:24790097). .

**Tissue specificity** Widely expressed.

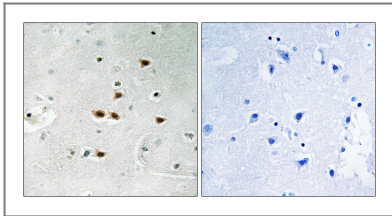
### Function

Function:E3 ubiquitin-protein ligase which accepts ubiquitin from an E2 ubiquitin-conjugating enzyme in the form of a thioester and then directly transfers the ubiquitin to targeted substrates. Regulates the transcriptional activity of several transcription factors, and probably plays an important role in the regulation of immune response.,pathway:Protein modification; protein ubiquitination.,PTM:Phosphorylated on tyrosine residues.,similarity:Contains 1 C2 domain.,similarity:Contains 1 HECT (E6AP-type E3 ubiquitin-protein ligase) domain.,similarity:Contains 4 WW domains.,subunit:Interacts via its WW domains with DRPLA, NFE2 and CBLC. Interacts with Epstein-Barr virus LMP2A. Interacts with NOTCH1, OCLN, JUN and JUNB. Interacts with NDFIP1 in vitro (By similarity). Interacts with ARHGEF7.,tissue specificity:Widely expressed.,

## Validation Data



Enzyme-Linked Immunosorbent Assay (Phospho-ELISA) for Immunogen Phosphopeptide (Phospho-left) and Non-Phosphopeptide (Phospho-right), using ITCH (Phospho-Tyr420) Antibody



Immunohistochemistry analysis of paraffin-embedded human brain, using ITCH (Phospho-Tyr420) Antibody. The picture on the right is blocked with the phospho peptide.

## Contact information

Orders: [order@immunoway.com](mailto:order@immunoway.com)  
Support: [tech@immunoway.com](mailto:tech@immunoway.com)  
Telephone: 877-594-3616 (Toll Free), 408-747-0185  
Website: <http://www.immunoway.com>  
Address: 2200 Ringwood Ave San Jose, CA 95131 USA



Please scan the QR code to access additional product information:  
**AIP4 (Phospho Tyr420) Rabbit pAb**

For Research Use Only. Not for Use in Diagnostic Procedures.

[Antibody](#) | [ELISA Kits](#) | [Protein](#) | [Reagents](#)