

TTK (Phospho Thr676) Rabbit pAb

CatalogNo: YP1062

Key Features

Host Species

- Rabbit

Reactivity

- Human, Mouse

Applications

- IHC, IF, ELISA

MW

- 97kD (Calculated)

Isotype

- IgG

Storage

Storage* -15°C to -25°C/1 year (Do not lower than -25°C)

Formulation Liquid in PBS containing 50% glycerol, 0.5% BSA and 0.02% sodium azide.

Recommended Dilution Ratios

IHC 1:100-1:300

ELISA 1:20000

IF 1:50-200

Basic Information

Clonality Polyclonal

Immunogen Information

Immunogen The antiserum was produced against synthesized peptide derived from human TTK around the phosphorylation site of Thr676. AA range:642-691

Specificity Phospho-TTK (T676) Polyclonal Antibody detects endogenous levels of TTK protein only when phosphorylated at T676. The name of modified sites may be influenced by many factors, such as species (the modified site was not originally found in human samples) and the change of protein sequence (the previous protein sequence is incomplete, and the protein sequence may be prolonged with the development of protein sequencing technology). When naming, we will use the "numbers" in historical reference to keep the sites consistent with the reports. The antibody binds to the following modification sequence (lowercase letters are modification sites):DTtSV

Target Information

Gene name TTK

Protein Name Dual specificity protein kinase TTK

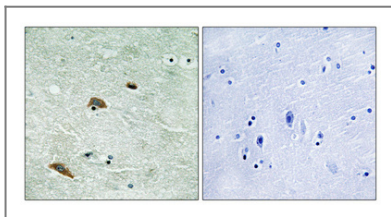
Organism	Gene ID	UniProt ID
Human	7272 ;	P33981 ;
Mouse		P35761 ;

Cellular Localization kinetochore,cytoplasm,spindle,membrane,

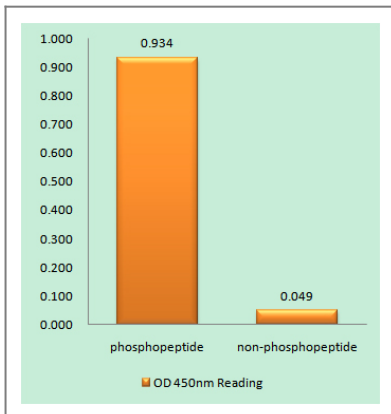
Tissue specificity Present in rapidly proliferating cell lines.

Function Catalytic activity:ATP + a protein = ADP + a phosphoprotein.,Function:Phosphorylates proteins on serine, threonine, and tyrosine. Probably associated with cell proliferation.,similarity:Belongs to the protein kinase superfamily.,similarity:Belongs to the protein kinase superfamily. Ser/Thr protein kinase family.,similarity:Contains 1 protein kinase domain.,tissue specificity:Present in rapidly proliferating cell lines.,

Validation Data



Immunohistochemical analysis of paraffin-embedded Human brain. Antibody was diluted at 1:100(4° overnight). High-pressure and temperature Tris-EDTA,pH8.0 was used for antigen retrieval. Negative contrl (right) obtained from antibody was pre-absorbed by immunogen peptide.



Enzyme-Linked Immunosorbent Assay (Phospho-ELISA) for Immunogen Phosphopeptide (Phospho-left) and Non-Phosphopeptide (Phospho-right), using TTK (Phospho-Thr676) Antibody

Contact information

Orders: order@immunoway.com
Support: tech@immunoway.com
Telephone: 877-594-3616 (Toll Free), 408-747-0185
Website: http://www.immunoway.com
Address: 2200 Ringwood Ave San Jose, CA 95131 USA



Please scan the QR code
to access additional
product information:
**TTK (Phospho
Thr676) Rabbit pAb**

For Research Use Only. Not for Use in Diagnostic Procedures.

[Antibody](#) | [ELISA Kits](#) | [Protein](#) | [Reagents](#)