

## PAK $\gamma$ (Phospho Ser197) Rabbit pAb

CatalogNo: YP1054

### Key Features

#### Host Species

- Rabbit

#### Reactivity

- Human, Mouse, Rat

#### Applications

- IHC, IF, ELISA

#### MW

- 58kD (Calculated)

#### Isotype

- IgG

### Storage

**Storage\*** -15°C to -25°C/1 year (Do not lower than -25°C)

**Formulation** Liquid in PBS containing 50% glycerol, 0.5% BSA and 0.02% sodium azide.

### Recommended Dilution Ratios

**IHC 1:100-1:300**

**ELISA 1:5000**

**IF 1:50-200**

### Basic Information

**Clonality** Polyclonal

### Immunogen Information

**Immunogen** The antiserum was produced against synthesized peptide derived from human PAK2 around the phosphorylation site of Ser197. AA range:163-212

**Specificity** Phospho-PAK $\gamma$  (S197) Polyclonal Antibody detects endogenous levels of PAK $\gamma$  protein only when phosphorylated at S197. The name of modified sites may be influenced by many factors, such as species (the modified site was not originally found in human samples) and the change of protein sequence (the previous protein sequence is incomplete, and the protein sequence may be prolonged with the development of protein sequencing technology). When naming, we will use the "numbers" in historical reference to keep the sites consistent with the reports. The antibody binds to the following modification sequence (lowercase letters are modification sites): TRSVI

---

## | Target Information

**Gene name** PAK2

**Protein Name** Serine/threonine-protein kinase PAK 2

Organism	Gene ID	UniProt ID
Human	<a href="#">5062</a> ;	<a href="#">Q13177</a> ;
Mouse	<a href="#">224105</a> ;	<a href="#">Q8CIN4</a> ;
Rat	<a href="#">29432</a> ;	<a href="#">Q64303</a> ;

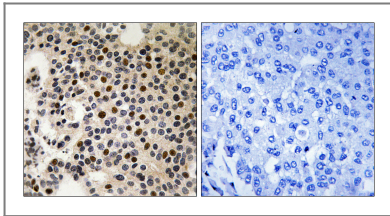
**Cellular Localization** [Serine/threonine-protein kinase PAK 2]: Cytoplasm. MYO18A mediates the cellular distribution of the PAK2-ARHGEF7-GIT1 complex to the inner surface of the cell membrane.; [PAK-2p34]: Nucleus. Cytoplasm, perinuclear region. Membrane; Lipid-anchor. Interaction with ARHGAP10 probably changes PAK-2p34 location to cytoplasmic perinuclear region. Myristoylation changes PAK-2p34 location to the membrane.

**Tissue specificity** Ubiquitously expressed. Higher levels seen in skeletal muscle, ovary, thymus and spleen.

**Function** Catalytic activity:ATP + a protein = ADP + a phosphoprotein.,enzyme regulation:Activated by binding small G proteins. Binding of GTP-bound CDC42 or RAC1 to the autoregulatory region releases monomers from the autoinhibited dimer, enables phosphorylation of Thr-402 and allows the kinase domain to adopt an active structure (By similarity). Following caspase cleavage, autophosphorylated PAK-2p34 is constitutively active.,Function:The activated kinase acts on a variety of targets. Phosphorylates ribosomal protein S6, histone H4 and myelin basic protein. Full length PAK 2 stimulates cell survival and cell growth. The process is, at least in part, mediated by phosphorylation and inhibition of pro-apoptotic BAD. Caspase-activated PAK-2p34 is involved in cell death response, probably involving the JNK signaling pathway. Cleaved PAK-2p34 seems to have a higher activity than the CDC42-activated form.,PTM:During apoptosis proteolytically cleaved by caspase-3 or caspase-3-like proteases to yield active PAK-2p34.,PTM:Full length PAK 2 is autophosphorylated when activated by CDC42/p21. Following cleavage, both peptides, PAK-2p27 and PAK-2p34, become highly autophosphorylated, with PAK-2p27 being phosphorylated on serine and PAK-2p34 on threonine residues, respectively. Autophosphorylation of PAK-2p27 can occur in the absence of any effectors and is dependent on phosphorylation of Thr-402, because PAK-2p27 is acting as an exogenous substrate.,PTM:PAK-2p34 is myristoylated.,PTM:Ubiquitinated, leading to its proteosomal degradation.,similarity:Belongs to the protein kinase superfamily.,similarity:Belongs to the protein kinase superfamily. STE Ser/Thr protein kinase family. STE20 subfamily.,similarity:Contains 1 CRIB domain.,similarity:Contains 1 protein kinase domain.,subcellular location:Interaction with ARHGAP10 probably changes PAK-2p34 location to cytoplasmic perinuclear region. Myristoylation changes PAK-2p34 location to the membrane.,subunit:Interacts tightly with GTP-bound but not GDP-bound CDC42/p21 and RAC1. Interacts with SH3MD4. Interacts with and activated by HIV-1 Nef. PAK-2p34 interacts with ARHGAP10.,tissue specificity:Ubiquitously expressed. Higher levels seen in skeletal muscle, ovary, thymus and spleen.,

---

## | Validation Data



Immunohistochemistry analysis of paraffin-embedded human breast carcinoma, using PAK2 (Phospho-Ser197) Antibody. The picture on the right is blocked with the phospho peptide.

## Contact information

Orders: [order@immunoway.com](mailto:order@immunoway.com)  
Support: [tech@immunoway.com](mailto:tech@immunoway.com)  
Telephone: 877-594-3616 (Toll Free), 408-747-0185  
Website: <http://www.immunoway.com>  
Address: 2200 Ringwood Ave San Jose, CA 95131 USA



Please scan the QR code to access additional product information:  
**PAK $\gamma$  (Phospho Ser197) Rabbit pAb**

For Research Use Only. Not for Use in Diagnostic Procedures.

[Antibody](#) | [ELISA Kits](#) | [Protein](#) | [Reagents](#)