

## MLK1/2 (Phospho Thr312/266) Rabbit pAb

CatalogNo: YP1050

### Key Features

#### Host Species

- Rabbit

#### Reactivity

- Human, Mouse

#### Applications

- IHC, IF, ELISA

#### MW

- 100-120kD (Calculated)

#### Isotype

- IgG

### Storage

**Storage\*** -15°C to -25°C/1 year (Do not lower than -25°C)

**Formulation** Liquid in PBS containing 50% glycerol, 0.5% BSA and 0.02% sodium azide.

### Recommended Dilution Ratios

**IHC 1:100-1:300**

**ELISA 1:5000**

**IF 1:50-200**

### Basic Information

**Clonality** Polyclonal

### Immunogen Information

**Immunogen** The antiserum was produced against synthesized peptide derived from human MLK1/2 around the phosphorylation site of Thr312/266. AA range:281-330

**Specificity** This antibody detects endogenous levels of MLK1/2 only when phosphorylated at Human:T312/266, Mouse:T305/266..The name of modified sites may be influenced by many factors, such as species (the modified site was not originally found in human samples) and the change of protein sequence (the previous protein sequence is incomplete, and the protein sequence may be prolonged with the development of protein sequencing technology). When naming, we will use the "numbers" in historical reference to keep the sites consistent with the reports. The antibody binds to the following modification sequence (lowercase letters are modification sites):AGtYA

## Target Information

**Gene name** MAP3K9/MAP3K10

**Protein Name** Mitogen-activated protein kinase kinase kinase 9/10

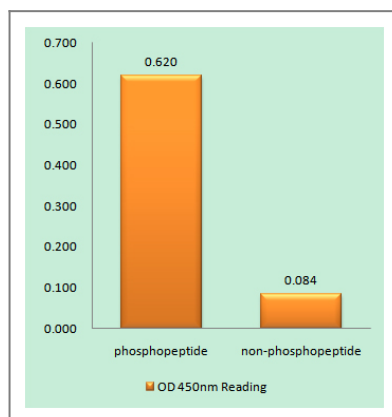
Organism	Gene ID	UniProt ID
Human	<a href="#">4293</a> ; <a href="#">4294</a> ;	<a href="#">P80192</a> ; <a href="#">Q02779</a> ;
Mouse	<a href="#">338372</a> ;	

**Cellular Localization** intracellular,integral component of membrane,

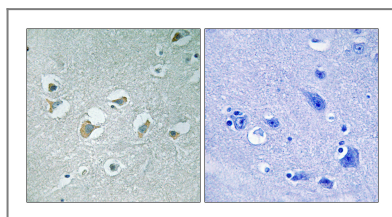
**Tissue specificity** Expressed in epithelial tumor cell lines of colonic, breast and esophageal origin.

**Function** Catalytic activity:ATP + a protein = ADP + a phosphoprotein.,cofactor:Magnesium.,enzyme regulation:Homodimerization via the leucine zipper domains is required for autophosphorylation and subsequent activation.,Function:Activates the JUN N-terminal pathway.,PTM:Autophosphorylation on serine and threonine residues within the activation loop plays a role in enzyme activation. Thr-312 is likely to be the main autophosphorylation site.,similarity:Belongs to the protein kinase superfamily. STE Ser/Thr protein kinase family. MAP kinase kinase kinase subfamily.,similarity:Contains 1 protein kinase domain.,similarity:Contains 1 SH3 domain.,subunit:Homodimer.,tissue specificity:Expressed in epithelial tumor cell lines of colonic, breast and esophageal origin.,

## Validation Data



Enzyme-Linked Immunosorbent Assay (Phospho-ELISA) for Immunogen Phosphopeptide (Phospho-left) and Non-Phosphopeptide (Phospho-right), using MLK1/2 (Phospho-Thr312/266) Antibody



Immunohistochemistry analysis of paraffin-embedded human brain, using MLK1/2 (Phospho-Thr312/266) Antibody. The picture on the right is blocked with the phospho peptide.

## | Contact information

Orders: order@immunoway.com  
Support: tech@immunoway.com  
Telephone: 877-594-3616 (Toll Free), 408-747-0185  
Website: <http://www.immunoway.com>  
Address: 2200 Ringwood Ave San Jose, CA 95131 USA



Please scan the QR code to access additional product information:  
**MLK1/2 (Phospho Thr312/266) Rabbit pAb**

---

For Research Use Only. Not for Use in Diagnostic Procedures.

[Antibody](#) | [ELISA Kits](#) | [Protein](#) | [Reagents](#)