

# LKB1 (Phospho Ser334) Rabbit pAb

CatalogNo: YP1048 **Orthogonal Validated** 

## Key Features

### Host Species

- Rabbit

### Reactivity

- Human, Mouse

### Applications

- WB, IHC, IF, ELISA

### MW

- 49kD (Calculated)

### Isotype

- IgG

## Storage

**Storage\*** -15°C to -25°C/1 year (Do not lower than -25°C)**Formulation** Liquid in PBS containing 50% glycerol, 0.5% BSA and 0.02% sodium azide.

## Recommended Dilution Ratios

**IHC 1:100-1:300****WB 1:1000-1:5000****ELISA 1:10000****IF 1:50-200**

## Basic Information

**Clonality** Polyclonal

## Immunogen Information

**Immunogen** The antiserum was produced against synthesized peptide derived from human LKB1 around the phosphorylation site of Ser334. AA range: 300-349

**Specificity**

Phospho-LKB1 (S334) Polyclonal Antibody detects endogenous levels of LKB1 protein only when phosphorylated at S334. The name of modified sites may be influenced by many factors, such as species (the modified site was not originally found in human samples) and the change of protein sequence (the previous protein sequence is incomplete, and the protein sequence may be prolonged with the development of protein sequencing technology). When naming, we will use the "numbers" in historical reference to keep the sites consistent with the reports. The antibody binds to the following modification sequence (lowercase letters are modification sites):WRsMT

**| Target Information**

**Gene name** STK11

**Protein Name** Serine/threonine-protein kinase STK11

Organism	Gene ID	UniProt ID
Human	<a href="#">6794;</a>	<a href="#">Q15831;</a>
Mouse	<a href="#">20869;</a>	<a href="#">Q9WTK7;</a>

**Cellular Localization**

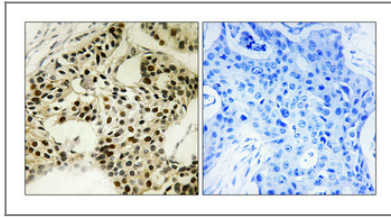
Nucleus. Cytoplasm. Membrane . Mitochondrion. A small fraction localizes at membranes (By similarity). Relocates to the cytoplasm when bound to STRAD (STRADA or STRADB) and CAB39/MO25 (CAB39/MO25alpha or CAB39L/MO25beta). Translocates to the mitochondrion during apoptosis. PTEN promotes cytoplasmic localization. .; [Isoform 2]: Nucleus . Cytoplasm . Predominantly nuclear, but translocates to the cytoplasm in response to metformin or peroxynitrite treatment.

**Tissue specificity** Ubiquitously expressed. Strongest expression in testis and fetal liver.

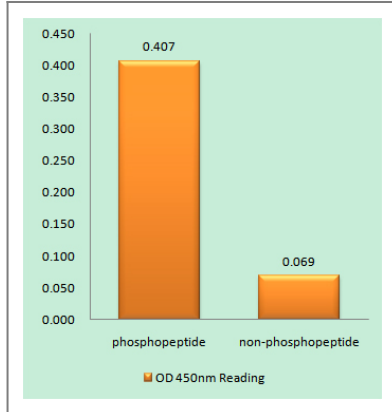
**Function**

Catalytic activity:ATP + a protein = ADP + a phosphoprotein.,cofactor:Magnesium or manganese.,Disease:Defects in STK11 are a cause of Peutz-Jeghers syndrome (PJS) [MIM:175200]. PJS is a rare hereditary disease in which there is predisposition to benign and malignant tumors of many organ systems. PJS is an autosomal dominant disorder characterized by melanocytic macules of the lips, multiple gastrointestinal hamartomatous polyps and an increased risk for various neoplasms, including gastrointestinal cancer.,Disease:Defects in STK11 have been associated with testicular tumors [MIM:273300]. It includes germ cell tumor (GCT) or testicular germ cell tumor (TGCT).,enzyme regulation:Activated by binding of a complex consisting of CAB39 and STRAD or CAB39 and ALS2CR2.,Function:Essential role in G1 cell cycle arrest. Phosphorylates and activates members of the AMPK-related subfamily of protein kinases. Tumor suppressor.,online information:PJS entry,PTM:Phosphorylated by a cAMP-dependent protein kinase.,similarity:Belongs to the protein kinase superfamily.,similarity:Belongs to the protein kinase superfamily. CAMK Ser/Thr protein kinase family. LKB1 subfamily.,similarity:Contains 1 protein kinase domain.,subcellular location:Relocates to the cytoplasm when bound to CAB39 and STRAD or CAB39 and ALS2CR2.,subunit:Found in a ternary complex composed of SMAD4, STK11 and STK11IP. Interacts with SMAD4 and STK11IP.,tissue specificity:Ubiquitously expressed. Strongest expression in testis and fetal liver.,

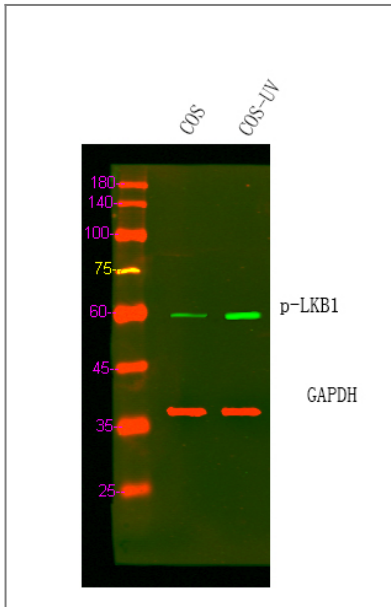
## Validation Data



Immunohistochemical analysis of paraffin-embedded Human breast cancer. Antibody was diluted at 1:100(4° overnight). High-pressure and temperature Tris-EDTA,pH8.0 was used for antigen retrieval. Negative contrl (right) obtained from antibody was pre-absorbed by immunogen peptide.



Enzyme-Linked Immunosorbent Assay (Phospho-ELISA) for Immunogen Phosphopeptide (Phospho-left) and Non-Phosphopeptide (Phospho-right), using LKB1 (Phospho-Ser334) Antibody



Western Blot analysis of COS cell lysis treated by UV. Primary Antibody was diluted at 1:1000. Secondary antibody(catalog#:RS23920) was diluted at 1:10000

## Contact information

Orders: [order@immunoway.com](mailto:order@immunoway.com)  
Support: [tech@immunoway.com](mailto:tech@immunoway.com)  
Telephone: 877-594-3616 (Toll Free), 408-747-0185  
Website: <http://www.immunoway.com>  
Address: 2200 Ringwood Ave San Jose, CA 95131 USA



Please scan the QR code to access additional product information:  
**LKB1 (Phospho Ser334) Rabbit pAb**