

ILK (Phospho Ser246) Rabbit pAb

CatalogNo: YP1044

Key Features

Host Species

- Rabbit

Reactivity

- Human, Mouse, Rat

Applications

- IHC, IF, ELISA

MW

- 51kD (Calculated)

Isotype

- IgG

Storage

Storage* -15°C to -25°C/1 year (Do not lower than -25°C)

Formulation Liquid in PBS containing 50% glycerol, 0.5% BSA and 0.02% sodium azide.

Recommended Dilution Ratios

IHC 1:100-1:300

ELISA 1:5000

IF 1:50-200

Basic Information

Clonality Polyclonal

Immunogen Information

Immunogen The antiserum was produced against synthesized peptide derived from human ILK around the phosphorylation site of Ser246. AA range: 212-261

Specificity Phospho-ILK (S246) Polyclonal Antibody detects endogenous levels of ILK protein only when phosphorylated at S246. The name of modified sites may be influenced by many factors, such as species (the modified site was not originally found in human samples) and the change of protein sequence (the previous protein sequence is incomplete, and the protein sequence may be prolonged with the development of protein sequencing technology). When naming, we will use the "numbers" in historical reference to keep the sites consistent with the reports. The antibody binds to the following modification sequence (lowercase letters are modification sites): IFsHP

| Target Information

Gene name ILK ILK1 ILK2

Protein Name Integrin-linked protein kinase

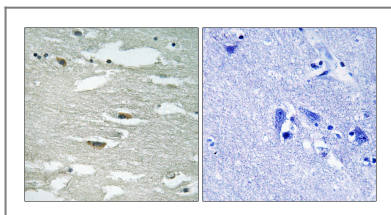
Organism	Gene ID	UniProt ID
Human	3611 ;	Q13418 ;
Mouse	16202 ;	O55222 ;
Rat	170922 ;	Q99J82 ;

Cellular Localization Cell junction, focal adhesion . Cell membrane; Peripheral membrane protein; Cytoplasmic side . Cell projection, lamellipodium . Cytoplasm, myofibril, sarcomere .

Tissue specificity Highly expressed in heart followed by skeletal muscle, pancreas and kidney. Weakly expressed in placenta, lung and liver.

Function Catalytic activity:ATP + a protein = ADP + a phosphoprotein.,Domain:A PH-like domain is involved in phosphatidylinositol phosphate binding.,enzyme regulation:Stimulated rapidly but transiently by both cell fibronectin interactions, as well as by insulin, in a PI3-K-dependent manner, likely via the binding of PtdIns(3,4,5)P3 with a PH-like domain of ILK.,Function:Receptor-proximal protein kinase regulating integrin-mediated signal transduction. May act as a mediator of inside-out integrin signaling. Focal adhesion protein part of the complex ILK-PINCH. This complex is considered to be one of the convergence points of integrin- and growth factor-signaling pathway. Could be implicated in mediating cell architecture, adhesion to integrin substrates and anchorage-dependent growth in epithelial cells. Phosphorylates beta-1 and beta-3 integrin subunit on serine and threonine residues, but also AKT1 and GSK3B.,PTM:Autophosphorylated on serine residues.,similarity:Belongs to the protein kinase superfamily. TKL Ser/Thr protein kinase family.,similarity:Contains 1 protein kinase domain.,similarity:Contains 5 ANK repeats.,subunit:Interacts with cytoplasmic domain of beta 1 subunit of integrin. Could also interact with beta 2, beta 3 and/or beta 5 subunit of integrin. Interacts (via ANK repeats) with LIMS1 and LIMS2. Interacts with parvins and probably TGFB1I1.,tissue specificity:Highly expressed in heart followed by skeletal muscle, pancreas and kidney. Weakly expressed in placenta, lung and liver.,

| Validation Data



Immunohistochemistry analysis of paraffin-embedded human brain, using ILK (Phospho-Ser246) Antibody. The picture on the right is blocked with the phospho peptide.

| Contact information

Orders: order@immunoway.com
Support: tech@immunoway.com
Telephone: 877-594-3616 (Toll Free), 408-747-0185
Website: http://www.immunoway.com
Address: 2200 Ringwood Ave San Jose, CA 95131 USA



Please scan the QR code
to access additional
product information:
**ILK (Phospho
Ser246) Rabbit pAb**

For Research Use Only. Not for Use in Diagnostic Procedures.

[Antibody](#) | [ELISA Kits](#) | [Protein](#) | [Reagents](#)