

GCN2 (Phospho Thr899) Rabbit pAb

CatalogNo: YP1042

Key Features

Host Species

- Rabbit

Reactivity

- Human, Mouse

Applications

- IHC, IF, ELISA

MW

- 187kD (Calculated)

Isotype

- IgG

Recommended Dilution Ratios

IHC 1:100-1:300**ELISA 1:5000****IF 1:50-200**

Storage

Storage*

-15°C to -25°C/1 year (Do not lower than -25°C)

Formulation

Liquid in PBS containing 50% glycerol, 0.5% BSA and 0.02% sodium azide.

Basic Information

Clonality

Polyclonal

Immunogen Information

Immunogen

The antiserum was produced against synthesized peptide derived from human GCN2 around the phosphorylation site of Thr899. AA range: 865-914

Specificity

Phospho-GCN2 (T899) Polyclonal Antibody detects endogenous levels of GCN2 protein only when phosphorylated at T899. The name of modified sites may be influenced by many factors, such as species (the modified site was not originally found in human samples) and the change of protein sequence (the previous protein sequence is incomplete, and the protein sequence may be prolonged with the development of protein sequencing technology). When naming, we will use the "numbers" in historical reference to keep the sites consistent with the reports. The antibody binds to the following modification sequence (lowercase letters are modification sites): HLTGM

| Target Information

Gene name EIF2AK4

Protein Name Eukaryotic translation initiation factor 2-alpha kinase 4

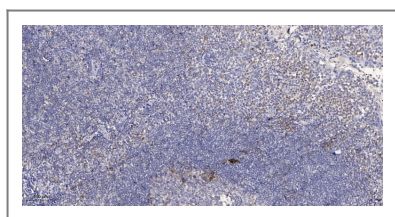
Organism	Gene ID	UniProt ID
Human	440275 ;	Q9P2K8 ;
Mouse	27103 ;	Q9QZ05 ;

Cellular Localization Cytoplasm .

Tissue specificity Widely expressed (PubMed:10504407). Expressed in lung, smooth muscle cells and macrophages (PubMed:24292273).

Function Catalytic activity:ATP + a protein = ADP + a phosphoprotein.,Domain:Kinase domain 1 is a degenerate kinase domain.,Domain:RWD domain is reported to interact with GCN1L1.,Function:Can phosphorylate the alpha subunit of EIF2 and may mediate translational control.,PTM:Autophosphorylated on threonine residues.,similarity:Belongs to the protein kinase superfamily. Ser/Thr protein kinase family. GCN2 subfamily.,similarity:Contains 1 RWD domain.,similarity:Contains 2 protein kinase domains.,tissue specificity:Widely expressed.,

| Validation Data



Immunohistochemical analysis of paraffin-embedded human tonsil. 1, Antibody was diluted at 1:200(4° overnight). 2, Tris-EDTA,pH9.0 was used for antigen retrieval. 3,Secondary antibody was diluted at 1:200(room temperature, 30min).

| Contact information

Orders: order@immunoway.com
Support: tech@immunoway.com
Telephone: 877-594-3616 (Toll Free), 408-747-0185
Website: <http://www.immunoway.com>
Address: 2200 Ringwood Ave San Jose, CA 95131 USA



Please scan the QR code to access additional product information:
GCN2 (Phospho Thr899) Rabbit pAb