

# Casein Kinase I $\gamma$ 1/2/3 (Phospho Tyr263) Rabbit pAb

CatalogNo: YP1040

## Key Features

### Host Species

- Rabbit

### Reactivity

- Human, Mouse, Rat

### Applications

- IHC, IF, ELISA

### MW

- 50kD (Calculated)

### Isotype

- IgG

## Storage

**Storage\*** -15°C to -25°C/1 year (Do not lower than -25°C)

**Formulation** Liquid in PBS containing 50% glycerol, 0.5% BSA and 0.02% sodium azide.

## Recommended Dilution Ratios

**IHC 1:100-1:300**

**ELISA 1:20000**

**IF 1:50-200**

## Basic Information

**Clonality** Polyclonal

## Immunogen Information

**Immunogen** The antiserum was produced against synthesized peptide derived from human CK-1 gamma1/2/3 around the phosphorylation site of Tyr263. AA range:229-278

**Specificity** Phospho-Casein Kinase I $\gamma$ 1/2/3 (Y263) Polyclonal Antibody detects endogenous levels of Casein Kinase I $\gamma$ 1/2/3 protein only when phosphorylated at Y263. The name of modified sites may be influenced by many factors, such as species (the modified site was not originally found in human samples) and the change of protein sequence (the previous protein sequence is incomplete, and the protein sequence may be prolonged with the development of protein sequencing technology). When naming, we will use the "numbers" in historical reference to keep the sites consistent with the reports. The antibody binds to the following modification sequence (lowercase letters are modification sites):ERYQK

## Target Information

**Gene name** CSNK1G1/CSNK1G2/CSNK1G3

**Protein Name** Casein kinase I isoform gamma-1/2/3

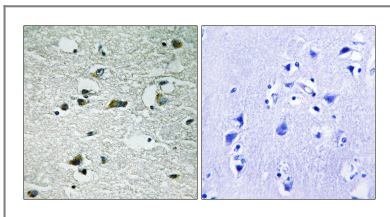
Organism	Gene ID	UniProt ID
Human	<a href="#">53944</a> ; <a href="#">1455</a> ; <a href="#">1456</a> ;	<a href="#">Q9HCP0</a> ; <a href="#">P78368</a> ; <a href="#">Q9Y6M4</a> ;
Mouse	<a href="#">214897</a> ; <a href="#">103236</a> ; <a href="#">70425</a> ;	
Rat	<a href="#">64086</a> ; <a href="#">65278</a> ; <a href="#">64823</a> ;	<a href="#">Q62761</a> ; <a href="#">Q62762</a> ; <a href="#">Q62763</a> ;

**Cellular Localization** Cytoplasm.

**Tissue specificity** Brain,Muscle,Pooled,

**Function** Catalytic activity:ATP + a protein = ADP + a phosphoprotein.,Function:Casein kinases are operationally defined by their preferential utilization of acidic proteins such as caseins as substrates. It can phosphorylate a large number of proteins. Participates in Wnt signaling.,PTM:Autophosphorylated.,similarity:Belongs to the protein kinase superfamily.,similarity:Belongs to the protein kinase superfamily. CK1 Ser/Thr protein kinase family. Casein kinase I subfamily.,similarity:Contains 1 protein kinase domain.,subunit:Monomer.,

## Validation Data



Immunohistochemistry analysis of paraffin-embedded human brain, using CK-1 gamma1/2/3 (Phospho-Tyr263) Antibody. The picture on the right is blocked with the phospho peptide.

## Contact information

Orders: [order@immunoway.com](mailto:order@immunoway.com)  
Support: [tech@immunoway.com](mailto:tech@immunoway.com)  
Telephone: 877-594-3616 (Toll Free), 408-747-0185  
Website: <http://www.immunoway.com>  
Address: 2200 Ringwood Ave San Jose, CA 95131 USA



Please scan the QR code to access additional product information:  
**Casein Kinase Iy1/2/3 (Phospho Tyr263) Rabbit pAb**

