

## Blk (Phospho Tyr501) Rabbit pAb

CatalogNo: YP1038

### Key Features

#### Host Species

- Rabbit

#### Reactivity

- Human, Mouse, Rat

#### Applications

- IHC, IF, ELISA

#### MW

- 58kD (Calculated)

#### Isotype

- IgG

### Recommended Dilution Ratios

IHC 1:100-1:300

ELISA 1:20000

IF 1:50-200

### Storage

**Storage\*** -15°C to -25°C/1 year (Do not lower than -25°C)

**Formulation** Liquid in PBS containing 50% glycerol, 0.5% BSA and 0.02% sodium azide.

### Basic Information

**Clonality** Polyclonal

### Immunogen Information

**Immunogen** The antiserum was produced against synthesized peptide derived from human BLK around the phosphorylation site of Tyr501. AA range:456-505

**Specificity** Phospho-Blk (Y501) Polyclonal Antibody detects endogenous levels of Blk protein only when phosphorylated at Y501. The name of modified sites may be influenced by many factors, such as species (the modified site was not originally found in human samples) and the change of protein sequence (the previous protein sequence is incomplete, and the protein sequence may be prolonged with the development of protein sequencing technology). When naming, we will use the "numbers" in historical reference to keep the sites consistent with the reports. The antibody binds to the following modification sequence (lowercase letters are modification sites):RQyEL

## | Target Information

**Gene name** BLK

**Protein Name** Tyrosine-protein kinase Blk

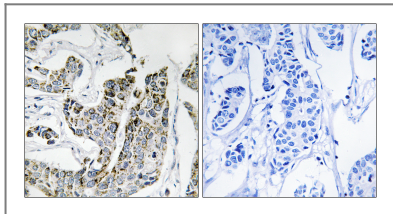
Organism	Gene ID	UniProt ID
Human	<a href="#">640</a> ;	<a href="#">P51451</a> ;
Mouse	<a href="#">12143</a> ;	<a href="#">P16277</a> ;

**Cellular Localization** Cell membrane ; Lipid-anchor . Present and active in lipid rafts. Membrane location is required for the phosphorylation of CD79A and CD79B (By similarity). .

**Tissue specificity** Expressed in lymphatic organs, pancreatic islets, Leydig cells, striate ducts of salivary glands and hair follicles.

**Function** Catalytic activity:ATP + a [protein]-L-tyrosine = ADP + a [protein]-L-tyrosine phosphate.,Function:May function in a signal transduction pathway that is restricted to B-lymphoid cells.,similarity:Belongs to the protein kinase superfamily. Tyr protein kinase family. SRC subfamily.,similarity:Contains 1 protein kinase domain.,similarity:Contains 1 SH2 domain.,similarity:Contains 1 SH3 domain.,

## | Validation Data



Immunohistochemistry analysis of paraffin-embedded human breast carcinoma, using BLK (Phospho-Tyr501) Antibody. The picture on the right is blocked with the phospho peptide.

## | Contact information

Orders: [order@immunoway.com](mailto:order@immunoway.com)  
Support: [tech@immunoway.com](mailto:tech@immunoway.com)  
Telephone: 877-594-3616 (Toll Free), 408-747-0185  
Website: <http://www.immunoway.com>  
Address: 2200 Ringwood Ave San Jose, CA 95131 USA



Please scan the QR code to access additional product information:  
**Blk (Phospho Tyr501) Rabbit pAb**