

## A-Raf (Phospho Ser299) Rabbit pAb

CatalogNo: YP1037

### | Key Features

#### Host Species

- Rabbit

#### Reactivity

- Human, Mouse, Rat

#### Applications

- IHC, IF, ELISA

#### MW

- 68kD (Calculated)

#### Isotype

- IgG

### | Recommended Dilution Ratios

IHC 1:100-1:300

ELISA 1:5000

IF 1:50-200

### | Storage

#### Storage\*

-15°C to -25°C/1 year(Do not lower than -25°C)

#### Formulation

Liquid in PBS containing 50% glycerol, 0.5% BSA and 0.02% sodium azide.

### | Basic Information

#### Clonality

Polyclonal

### | Immunogen Information

#### Immunogen

The antiserum was produced against synthesized peptide derived from human A-RAF around the phosphorylation site of Ser299. AA range:266-315

#### Specificity

Phospho-A-Raf (S299) Polyclonal Antibody detects endogenous levels of A-Raf protein only when phosphorylated at S299. The name of modified sites may be influenced by many factors, such as species (the modified site was not originally found in human samples) and the change of protein sequence (the previous protein sequence is incomplete, and the protein sequence may be prolonged with the development of protein sequencing technology). When naming, we will use the "numbers" in historical reference to keep the sites consistent with the reports. The antibody binds to the following modification sequence (lowercase letters are modification sites):RDSGY

## | Target Information

**Gene name** ARAF

**Protein Name** Serine/threonine-protein kinase A-Raf

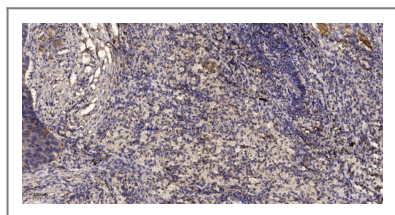
Organism	Gene ID	UniProt ID
Human	<a href="#">369</a> ;	<a href="#">P10398</a> ;
Mouse	<a href="#">11836</a> ;	<a href="#">P04627</a> ;
Rat	<a href="#">64363</a> ;	<a href="#">P14056</a> ;

**Cellular Localization** intracellular,mitochondrion,cytosol,

**Tissue specificity** Predominantly in urogenital tissues.

**Function** Catalytic activity:ATP + a protein = ADP + a phosphoprotein.,cofactor:Binds 2 zinc ions per subunit.,Function:Involved in the transduction of mitogenic signals from the cell membrane to the nucleus.,similarity:Belongs to the protein kinase superfamily.,similarity:Belongs to the protein kinase superfamily. TKL Ser/Thr protein kinase family. RAF subfamily.,similarity:Contains 1 phorbol-ester/DAG-type zinc finger.,similarity:Contains 1 protein kinase domain.,similarity:Contains 1 RBD (Ras-binding) domain.,subunit:Interacts with TH1L/NELFD.,tissue specificity:Predominantly in urogenital tissues.,

## | Validation Data



Immunohistochemical analysis of paraffin-embedded human Squamous cell carcinoma of lung. 1, Antibody was diluted at 1:200(4° overnight). 2, Tris-EDTA,pH9.0 was used for antigen retrieval. 3,Secondary antibody was diluted at 1:200(room temperature, 45min).

## | Contact information

Orders: order@immunoway.com  
Support: tech@immunoway.com  
Telephone: 877-594-3616 (Toll Free), 408-747-0185  
Website: <http://www.immunoway.com>  
Address: 2200 Ringwood Ave San Jose, CA 95131 USA



Please scan the QR code to access additional product information:  
**A-Raf (Phospho Ser299) Rabbit pAb**

