

## Oct-1 (Phospho Ser385) Rabbit pAb

CatalogNo: YP1021

### Key Features

#### Host Species

- Rabbit

#### Reactivity

- Human, Mouse, Rat

#### Applications

- IHC, IF, ELISA

#### MW

- 76kD (Calculated)

#### Isotype

- IgG

### Storage

**Storage\*** -15°C to -25°C/1 year (Do not lower than -25°C)

**Formulation** Liquid in PBS containing 50% glycerol, 0.5% BSA and 0.02% sodium azide.

### Recommended Dilution Ratios

IHC 1:100-1:300

ELISA 1:20000

IF 1:50-200

### Basic Information

**Clonality** Polyclonal

### Immunogen Information

**Immunogen** The antiserum was produced against synthesized peptide derived from human POU2F1/OCT1 around the phosphorylation site of Ser385. AA range:361-410

**Specificity** Phospho-Oct-1 (S385) Polyclonal Antibody detects endogenous levels of 41183 protein only when phosphorylated at S385. The name of modified sites may be influenced by many factors, such as species (the modified site was not originally found in human samples) and the change of protein sequence (the previous protein sequence is incomplete, and the protein sequence may be prolonged with the development of protein sequencing technology). When naming, we will use the "numbers" in historical reference to keep the sites consistent with the reports. The antibody binds to the following modification sequence (lowercase letters are modification sites):RTsIE

## Target Information

**Gene name** POU2F1

**Protein Name** POU domain class 2 transcription factor

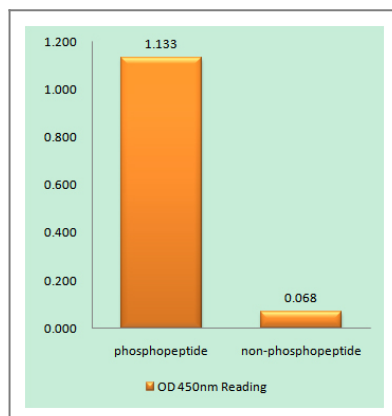
Organism	Gene ID	UniProt ID
Human	<a href="#">5451</a> ; <a href="#">5452</a> ;	<a href="#">P14859</a> ; <a href="#">P09086</a> ;
Mouse	<a href="#">18986</a> ; <a href="#">18987</a> ;	
Rat	<a href="#">171068</a> ;	<a href="#">P31503</a> ;

**Cellular Localization** Nucleus.

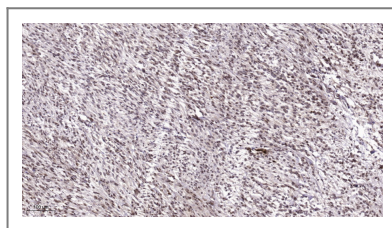
**Tissue specificity** Ubiquitous. Isoform 2 is lymphocyte-specific.

**Function** Function:Transcription factor that binds to the octamer motif (5'-ATTTGCAT-3') and activates the promoters of the genes for some small nuclear RNAs (snRNA) and of genes such as those for histone H2B and immunoglobulins. Modulates transcription transactivation by NR3C1, AR and PGR.,PTM:Phosphorylated by PRKDC.,similarity:Belongs to the POU transcription factor family. Class-2 subfamily.,similarity:Contains 1 homeobox DNA-binding domain.,similarity:Contains 1 POU-specific domain.,subunit:Interacts with NR3C1, AR, PGR and HCFC1.,tissue specificity:Ubiquitous. Isoform 2 is lymphocyte-specific.,

## Validation Data



Enzyme-Linked Immunosorbent Assay (Phospho-ELISA) for Immunogen Phosphopeptide (Phospho-left) and Non-Phosphopeptide (Phospho-right), using POU2F1/OCT1 (Phospho-Ser385) Antibody



Immunohistochemical analysis of paraffin-embedded human Colon cancer. 1, Antibody was diluted at 1:200(4° overnight). 2, Tris-EDTA,pH9.0 was used for antigen retrieval. 3,Secondary antibody was diluted at 1:200(room temperature, 45min).

## | Contact information

Orders: order@immunoway.com  
Support: tech@immunoway.com  
Telephone: 877-594-3616 (Toll Free), 408-747-0185  
Website: <http://www.immunoway.com>  
Address: 2200 Ringwood Ave San Jose, CA 95131 USA



Please scan the QR code to access additional product information:  
**Oct-1 (Phospho Ser385) Rabbit pAb**

---

For Research Use Only. Not for Use in Diagnostic Procedures.

[Antibody](#) | [ELISA Kits](#) | [Protein](#) | [Reagents](#)