

IPP-2 (Phospho Ser120/121) Rabbit pAb

CatalogNo: YP1011

Key Features

Host Species

- Rabbit

Reactivity

- Human, Mouse, Rat

Applications

- IHC, IF, ELISA

MW

- 23kD (Calculated)

Isotype

- IgG

Storage

Storage* -15°C to -25°C/1 year (Do not lower than -25°C)

Formulation Liquid in PBS containing 50% glycerol, 0.5% BSA and 0.02% sodium azide.

Recommended Dilution Ratios

IHC 1:100-1:300

ELISA 1:5000

IF 1:50-200

Basic Information

Clonality Polyclonal

Immunogen Information

Immunogen The antiserum was produced against synthesized peptide derived from human PPP1R2 around the phosphorylation site of Ser120 and Ser121. AA range:86-135

Specificity This antibody detects endogenous levels of IPP-2 only when phosphorylated at Ser120 or Ser121, and dually phosphorylated at two sites. The name of modified sites may be influenced by many factors, such as species (the modified site was not originally found in human samples) and the change of protein sequence (the previous protein sequence is incomplete, and the protein sequence may be prolonged with the development of protein sequencing technology). When naming, we will use the "numbers" in historical reference to keep the sites consistent with the reports. The antibody binds to the following modification sequence (lowercase letters are modification sites): EssGE

Target Information

Gene name PPP1R2

Protein Name Protein phosphatase inhibitor 2

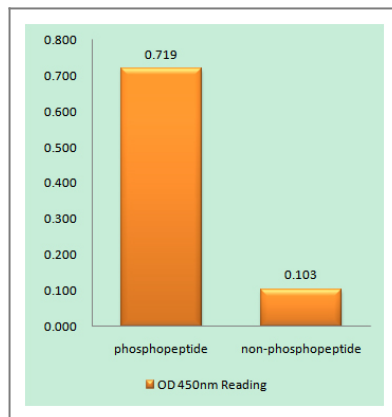
Organism	Gene ID	UniProt ID
Human	5504;	P41236;
Mouse	66849;	Q9DCL8;
Rat	192361;	P50411;

Cellular Localization protein phosphatase type 1 complex,

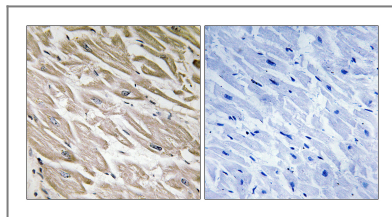
Tissue specificity Epithelium,Heart,Platelet,Skin,Testis,

Function Function:Inhibitor of protein-phosphatase 1.,PTM:Phosphorylation on Thr-73 by GSK3 activates PP1 by dissociating the PP1-PPP1R2 complex (By similarity). Phosphorylation on Ser-44 by ATM activates PP1 by dissociating the PP1-PPP1R2 complex.,similarity:Belongs to the protein phosphatase inhibitor 2 family.,subunit:Heterodimer with PP1.,

Validation Data



Enzyme-Linked Immunosorbent Assay (Phospho-ELISA) for Immunogen Phosphopeptide (Phospho-left) and Non-Phosphopeptide (Phospho-right), using PPP1R2 (Phospho-Ser120+Ser121) Antibody



Immunohistochemistry analysis of paraffin-embedded human heart, using PPP1R2 (Phospho-Ser120+Ser121) Antibody. The picture on the right is blocked with the phospho peptide.

Contact information

Orders: order@immunoway.com
Support: tech@immunoway.com
Telephone: 877-594-3616 (Toll Free), 408-747-0185
Website: http://www.immunoway.com
Address: 2200 Ringwood Ave San Jose, CA 95131 USA



Please scan the QR code
to access additional
product information:
**IPP-2 (Phospho
Ser120/121) Rabbit
pAb**

For Research Use Only. Not for Use in Diagnostic Procedures.

[Antibody](#) | [ELISA Kits](#) | [Protein](#) | [Reagents](#)