

MARK1/2/3/4 (Phospho Thr215) Rabbit pAb

CatalogNo: YP1008

Key Features

Host Species

- Rabbit

Reactivity

- Human, Mouse, Rat

Applications

- IHC, IF, ELISA

MW

- 89kD (Calculated)

Isotype

- IgG

Storage

Storage* -15°C to -25°C/1 year (Do not lower than -25°C)

Formulation Liquid in PBS containing 50% glycerol, 0.5% BSA and 0.02% sodium azide.

Recommended Dilution Ratios

IHC 1:100-1:300

ELISA 1:5000

IF 1:50-200

Basic Information

Clonality Polyclonal

Immunogen Information

Immunogen The antiserum was produced against synthesized peptide derived from human MARK1/2/3/4 around the phosphorylation site of Thr215. AA range:181-230

Specificity Phospho-MARK1/2/3/4 (T215) Polyclonal Antibody detects endogenous levels of MARK1/2/3/4 protein only when phosphorylated at T215. The name of modified sites may be influenced by many factors, such as species (the modified site was not originally found in human samples) and the change of protein sequence (the previous protein sequence is incomplete, and the protein sequence may be prolonged with the development of protein sequencing technology). When naming, we will use the "numbers" in historical reference to keep the sites consistent with the reports. The antibody binds to the following modification sequence (lowercase letters are modification sites):LDtFC

Target Information

Gene name MARK1/2/3/4

Protein Name Serine/threonine-protein kinase MARK1/2/3/4

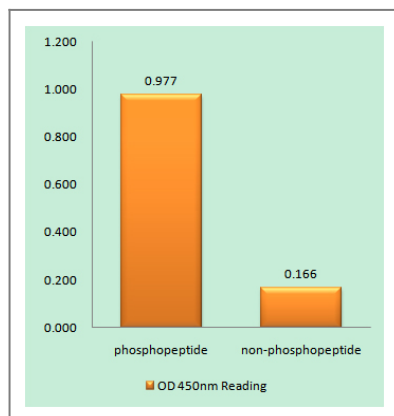
Organism	Gene ID	UniProt ID
Human	4139 ; 2011 ; 4140 ; 57787 ;	Q9P0L2 ; Q7KZ17 ; P27448 ; Q96L34 ;
Mouse	226778 ; 13728 ; 17169 ; 232944 ;	
Rat	117016 ; 60328 ; 170577 ;	O08678 ; O08679 ; Q8VHF0 ;

Cellular Localization Cell membrane ; Peripheral membrane protein . Cytoplasm, cytoskeleton . Cytoplasm . Cell projection, dendrite . Appears to localize to an intracellular network. .

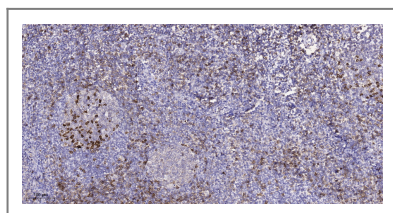
Tissue specificity Highly expressed in heart, skeletal muscle, brain, fetal brain and fetal kidney.

Function Catalytic activity:ATP + a protein = ADP + a phosphoprotein.,cofactor:Magnesium.,enzyme regulation:Activated by phosphorylation on Thr-215 by STK11 in complex with STE20-related adapter-alpha (STRAD alpha) pseudo kinase and CAB39.,Function:May play a role in cytoskeletal stability.,similarity:Belongs to the protein kinase superfamily. CAMK Ser/Thr protein kinase family. MARK subfamily.,similarity:Contains 1 KA1 (kinase-associated) domain.,similarity:Contains 1 protein kinase domain.,similarity:Contains 1 UBA domain.,subcellular location:Appears to localize to an intracellular network.,tissue specificity:Highly expressed in heart, skeletal muscle, brain, fetal brain and fetal kidney.,

Validation Data



Enzyme-Linked Immunosorbent Assay (Phospho-ELISA) for Immunogen Phosphopeptide (Phospho-left) and Non-Phosphopeptide (Phospho-right), using MARK1/2/3/4 (Phospho-Thr215) Antibody



Immunohistochemical analysis of paraffin-embedded human tonsil. 1, Antibody was diluted at 1:200(4° overnight). 2, Tris-EDTA,pH9.0 was used for antigen retrieval. 3,Secondary antibody was diluted at 1:200(room temperature, 45min).

| Contact information

Orders: order@immunoway.com
Support: tech@immunoway.com
Telephone: 877-594-3616 (Toll Free), 408-747-0185
Website: <http://www.immunoway.com>
Address: 2200 Ringwood Ave San Jose, CA 95131 USA



Please scan the QR code
to access additional
product information:
MARK1/2/3/4
(Phospho Thr215)
Rabbit pAb

For Research Use Only. Not for Use in Diagnostic Procedures.

[Antibody](#) | [ELISA Kits](#) | [Protein](#) | [Reagents](#)