

## IL-1RI (Phospho Tyr496) Rabbit pAb

CatalogNo: YP1002

### Key Features

**Host Species**

- Rabbit

**Reactivity**

- Human, Mouse, Rat

**Applications**

- WB, IHC, IF, ELISA

**MW**

- 65kD (Observed)

**Isotype**

- IgG

### Storage

**Storage\*** -15°C to -25°C/1 year (Do not lower than -25°C)**Formulation** Liquid in PBS containing 50% glycerol, 0.5% BSA and 0.02% sodium azide.

### Recommended Dilution Ratios

**WB 1:500-1:2000****IHC 1:100-1:300****ELISA 1:10000****IF 1:50-200**

### Basic Information

**Clonality** Polyclonal

### Immunogen Information

**Immunogen** The antiserum was produced against synthesized peptide derived from human IL-1R $\alpha$ /CD121 $\alpha$  around the phosphorylation site of Tyr496. AA range: 471-520**Specificity** Phospho-IL-1RI (Y496) Polyclonal Antibody detects endogenous levels of IL-1RI protein only when phosphorylated at Y496. The name of modified sites may be influenced by many factors, such as species (the modified site was not originally found in human samples) and the change of protein sequence (the previous protein sequence is incomplete, and the protein sequence may be prolonged with the development of protein sequencing technology). When naming, we will use the "numbers" in historical reference to keep the sites consistent with the reports. The antibody binds to the following modification sequence (lowercase letters are modification sites): QDyEK

## Target Information

**Gene name** IL1R1

**Protein Name** Interleukin-1 receptor type 1

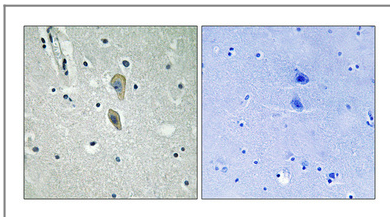
| Organism | Gene ID                 | UniProt ID               |
|----------|-------------------------|--------------------------|
| Human    | <a href="#">3554</a> ;  | <a href="#">P14778</a> ; |
| Mouse    | <a href="#">16177</a> ; | <a href="#">P13504</a> ; |
| Rat      |                         | <a href="#">Q02955</a> ; |

**Cellular Localization** Membrane ; Single-pass type I membrane protein . Cell membrane . Secreted .

**Tissue specificity** Expressed in T-helper cell subsets. Preferentially expressed in T-helper 1 (Th1) cells.

**Function** Function:Receptor for interleukin-1 alpha (IL-1A), beta (IL-1B), and interleukin-1 receptor antagonist protein (IL-1RA). Binding to the agonist leads to the activation of NF-kappa-B. Signaling involves formation of a ternary complex containing IL1RAP, TOLLIP, MYD88, and IRAK1 or IRAK2.,similarity:Belongs to the interleukin-1 receptor family.,similarity:Contains 1 TIR domain.,similarity:Contains 3 Ig-like C2-type (immunoglobulin-like) domains.,subunit:Binds IL1RAP.,

## Validation Data



Immunohistochemical analysis of paraffin-embedded Human brain. Antibody was diluted at 1:100(4° overnight). High-pressure and temperature Tris-EDTA,pH8.0 was used for antigen retrieval. Negative contrl (right) obtained from antibody was pre-absorbed by immunogen peptide.

## Contact information

Orders: [order@immunoway.com](mailto:order@immunoway.com)  
Support: [tech@immunoway.com](mailto:tech@immunoway.com)  
Telephone: 877-594-3616 (Toll Free), 408-747-0185  
Website: <http://www.immunoway.com>  
Address: 2200 Ringwood Ave San Jose, CA 95131 USA



Please scan the QR code to access additional product information:  
**IL-1RI (Phospho Tyr496) Rabbit pAb**