

HAND1 (Phospho Ser98) Rabbit pAb

CatalogNo: YP0998

Key Features

Host Species

- Rabbit

Reactivity

- Human, Mouse, Rat

Applications

- IHC, IF, ELISA

MW

- 24kD (Calculated)

Isotype

- IgG

Storage

Storage* -15°C to -25°C/1 year (Do not lower than -25°C)

Formulation Liquid in PBS containing 50% glycerol, 0.5% BSA and 0.02% sodium azide.

Recommended Dilution Ratios

IHC 1:100-1:300

ELISA 1:10000

IF 1:50-200

Basic Information

Clonality Polyclonal

Immunogen Information

Immunogen The antiserum was produced against synthesized peptide derived from human HAND1 around the phosphorylation site of Ser98. AA range: 71-120

Specificity Phospho-HAND1 (S98) Polyclonal Antibody detects endogenous levels of HAND1 protein only when phosphorylated at S98. The name of modified sites may be influenced by many factors, such as species (the modified site was not originally found in human samples) and the change of protein sequence (the previous protein sequence is incomplete, and the protein sequence may be prolonged with the development of protein sequencing technology). When naming, we will use the "numbers" in historical reference to keep the sites consistent with the reports. The antibody binds to the following modification sequence (lowercase letters are modification sites): KGsGP

Target Information

Gene name HAND1

Protein Name Heart- and neural crest derivatives-expressed protein 1

Organism	Gene ID	UniProt ID
Human	9421 ;	O96004 ;
Mouse	15110 ;	Q64279 ;
Rat	59112 ;	P97832 ;

Cellular Localization

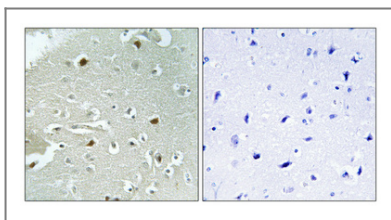
Nucleus, nucleoplasm . Nucleus, nucleolus . Interaction with MDFIC sequesters it into the nucleolus, preventing the transcription factor activity. Phosphorylation by PLK4 disrupts the interaction with MDFIC and releases it from the nucleolus, leading to transcription factor activity (By similarity). .

Tissue specificity Heart.

Function

Function:Plays an essential role in early trophoblast differentiation and in cardiac morphogenesis. In the adult, could be required for ongoing expression of cardiac-specific genes. Binds the DNA sequence 5'-NRTCTG-3' (non-canonical E-box).,similarity:Contains 1 basic helix-loop-helix (bHLH) domain.,subunit:Efficient DNA binding requires dimerization with another bHLH protein. Forms homodimers and heterodimers with TCF3 gene products E12 and E47, HAND2 and HEY1, HEY2 and HEYL (hairy-related transcription factors).,tissue specificity:Heart.,

Validation Data



Immunohistochemical analysis of paraffin-embedded Human brain. Antibody was diluted at 1:100(4° overnight). High-pressure and temperature Tris-EDTA,pH8.0 was used for antigen retrieval. Negative contrl (right) obtained from antibody was pre-absorbed by immunogen peptide.

Contact information

Orders: order@immunoway.com
Support: tech@immunoway.com
Telephone: 877-594-3616 (Toll Free), 408-747-0185
Website: <http://www.immunoway.com>
Address: 2200 Ringwood Ave San Jose, CA 95131 USA



Please scan the QR code to access additional product information:
HAND1 (Phospho Ser98) Rabbit pAb

