

CD88 (Phospho Ser338) Rabbit pAb

CatalogNo: YP0982

Key Features

Host Species

- Rabbit

Reactivity

- Human,Rat,Mouse,

Applications

- IHC,IF,ELISA

MW

- 39kD (Calculated)

Isotype

- IgG

Recommended Dilution Ratios

IHC 1:100-1:300

ELISA 1:40000

IF 1:50-200

Storage

Storage*

-15°C to -25°C/1 year(Do not lower than -25°C)

Formulation

Liquid in PBS containing 50% glycerol, 0.5% BSA and 0.02% sodium azide.

Basic Information

Clonality

Polyclonal

Immunogen Information

Immunogen

The antiserum was produced against synthesized peptide derived from human CD88/C5aR around the phosphorylation site of Ser338. AA range:301-350

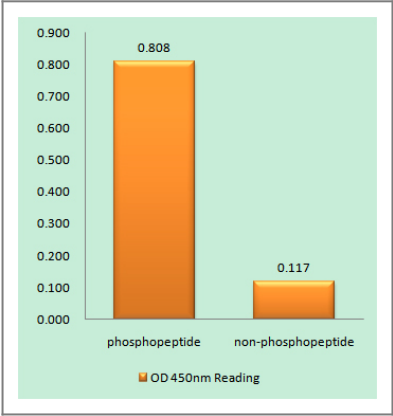
Specificity

Phospho-CD88 (S338) Polyclonal Antibody detects endogenous levels of CD88 protein only when phosphorylated at S338.The name of modified sites may be influenced by many factors, such as species (the modified site was not originally found in human samples) and the change of protein sequence (the previous protein sequence is incomplete, and the protein sequence may be prolonged with the development of protein sequencing technology). When naming, we will use the "numbers" in historical reference to keep the sites consistent with the reports. The antibody binds to the following modification sequence (lowercase letters are modification sites):TRsTV

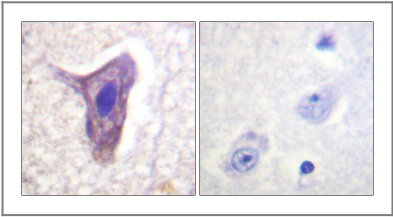
Target Information

Gene name	C5AR1		
Protein Name	C5a anaphylatoxin chemotactic receptor		
	Organism	Gene ID	UniProt ID
	Human	728 ;	P21730 ;
	Mouse		P30993 ;
Cellular Localization	Cell membrane ; Multi-pass membrane protein . Cytoplasmic vesicle . Phosphorylated C5aR colocalizes with ARRB1 and ARRB2 in cytoplasmic vesicles. .		
Tissue specificity	Brain,		
Function	Function:Receptor for the chemotactic and inflammatory peptide anaphylatoxin C5a. This receptor stimulates chemotaxis, granule enzyme release and superoxide anion production.,PTM:Sulfation plays a critical role in the association of the receptor with C5a, but no significant role in the ability of the receptor to transduce a signal and mobilize calcium in response to a small peptide agonist.,similarity:Belongs to the G-protein coupled receptor 1 family.,		

Validation Data



Enzyme-Linked Immunosorbent Assay (Phospho-ELISA) for Immunogen Phosphopeptide (Phospho-left) and Non-Phosphopeptide (Phospho-right), using CD88/C5aR (Phospho-Ser338) Antibody



Immunohistochemistry analysis of paraffin-embedded human brain, using CD88/C5aR (Phospho-Ser338) Antibody. The picture on the right is blocked with the phospho peptide.

Contact information

Orders: order@immunoway.com
Support: tech@immunoway.com
Telephone: 877-594-3616 (Toll Free), 408-747-0185
Website: <http://www.immunoway.com>
Address: 2200 Ringwood Ave San Jose, CA 95131 USA



Please scan the QR code
to access additional
product information:
**CD88 (Phospho
Ser338) Rabbit pAb**

For Research Use Only. Not for Use in Diagnostic Procedures.

[Antibody](#) | [ELISA Kits](#) | [Protein](#) | [Reagents](#)