

## VAV1 (Phospho Tyr160) Rabbit pAb

CatalogNo: YP0969

### Key Features

#### Host Species

- Rabbit

#### Reactivity

- Human, Mouse, Rat

#### Applications

- IHC, IF, ELISA

#### MW

- 98kD (Calculated)

#### Isotype

- IgG

### Storage

**Storage\*** -15°C to -25°C/1 year (Do not lower than -25°C)

**Formulation** Liquid in PBS containing 50% glycerol, 0.5% BSA and 0.02% sodium azide.

### Recommended Dilution Ratios

**IHC 1:100-1:300**

**ELISA 1:5000**

**IF 1:50-200**

### Basic Information

**Clonality** Polyclonal

### Immunogen Information

**Immunogen** The antiserum was produced against synthesized peptide derived from human VAV1 around the phosphorylation site of Tyr160. AA range:131-180

**Specificity** Phospho-Vav (Y160) Polyclonal Antibody detects endogenous levels of Vav protein only when phosphorylated at Y160. The name of modified sites may be influenced by many factors, such as species (the modified site was not originally found in human samples) and the change of protein sequence (the previous protein sequence is incomplete, and the protein sequence may be prolonged with the development of protein sequencing technology). When naming, we will use the "numbers" in historical reference to keep the sites consistent with the reports. The antibody binds to the following modification sequence (lowercase letters are modification sites):DLyDC

---

## | Target Information

**Gene name** VAV1

**Protein Name** Proto-oncogene vav

Organism	Gene ID	UniProt ID
Human	<a href="#">7409;</a>	<a href="#">P15498;</a>
Mouse	<a href="#">22324;</a>	<a href="#">P27870;</a>
Rat		<a href="#">P54100;</a>

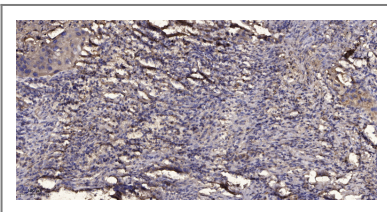
**Cellular Localization** intracellular,cytosol,plasma membrane,cell-cell junction,

**Tissue specificity** Widely expressed in hematopoietic cells but not in other cell types.

**Function** Domain:The DH domain is involved in interaction with CCPG1.,Function:Couples tyrosine kinase signals with the activation of the Rho/Rac GTPases, thus leading to cell differentiation and/or proliferation.,miscellaneous:'Vav' stands for the sixth letter of the Hebrew alphabet.,PTM:Phosphorylated on tyrosine residues.,similarity:Contains 1 CH (calponin-homology) domain.,similarity:Contains 1 DH (DBL-homology) domain.,similarity:Contains 1 PH domain.,similarity:Contains 1 phorbol-ester/DAG-type zinc finger.,similarity:Contains 1 SH2 domain.,similarity:Contains 2 SH3 domains.,subunit:May interact with CCPG1 (By similarity). Interacts with APS, DOCK2, GRB2, GRB3, DOCK2, SLA and ZNF655/VIK. Interacts with SIAH2; without leading to its degradation. Associates with BLNK, PLCG1, GRB2 and NCK1 in a B-cell antigen receptor-dependent fashion. Interacts with CBLB; which inhibits tyrosine phosphorylation and down-regulates activity. Interacts with SHB and CLNK.,tissue specificity:Widely expressed in hematopoietic cells but not in other cell types.,

---

## | Validation Data



Immunohistochemical analysis of paraffin-embedded human Squamous cell carcinoma of lung. 1, Antibody was diluted at 1:200(4° overnight). 2, Tris-EDTA,pH9.0 was used for antigen retrieval. 3,Secondary antibody was diluted at 1:200(room temperature, 45min).

## | Contact information

Orders: order@immunoway.com  
Support: tech@immunoway.com  
Telephone: 877-594-3616 (Toll Free), 408-747-0185  
Website: http://www.immunoway.com  
Address: 2200 Ringwood Ave San Jose, CA 95131 USA



Please scan the QR code  
to access additional  
product information:  
**VAV1 (Phospho  
Tyr160) Rabbit pAb**

---

For Research Use Only. Not for Use in Diagnostic Procedures.

[Antibody](#) | [ELISA Kits](#) | [Protein](#) | [Reagents](#)