

RyR-2 (Phospho Ser2808) Rabbit pAb

CatalogNo: YP0967

Key Features

Host Species

- Rabbit

Reactivity

- Human, Mouse, Rat

Applications

- IHC, IF, ELISA

MW

- 564kD (Calculated)

Isotype

- IgG

Storage

Storage* -15°C to -25°C/1 year (Do not lower than -25°C)

Formulation Liquid in PBS containing 50% glycerol, 0.5% BSA and 0.02% sodium azide.

Recommended Dilution Ratios

IHC 1:100-1:300

ELISA 1:10000

IF 1:50-200

Basic Information

Clonality Polyclonal

Immunogen Information

Immunogen The antiserum was produced against synthesized peptide derived from human RyR2 around the phosphorylation site of Ser2808. AA range: 2774-2823

Specificity Phospho-RyR-2 (S2808) Polyclonal Antibody detects endogenous levels of RyR-2 protein only when phosphorylated at S2808. The name of modified sites may be influenced by many factors, such as species (the modified site was not originally found in human samples) and the change of protein sequence (the previous protein sequence is incomplete, and the protein sequence may be prolonged with the development of protein sequencing technology). When naming, we will use the "numbers" in historical reference to keep the sites consistent with the reports. The antibody binds to the following modification sequence (lowercase letters are modification sites): RIsQT

| Target Information

Gene name RYR2

Protein Name Ryanodine receptor 2

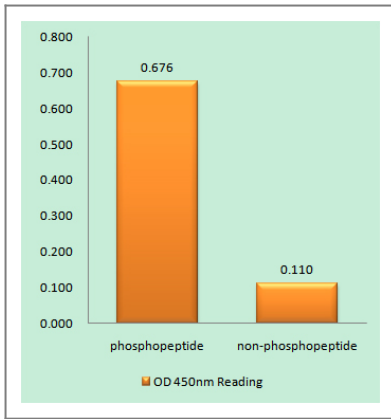
Organism	Gene ID	UniProt ID
Human	6262 ;	Q92736 ;
Mouse	20191 ;	E9Q401 ;
Rat	689560 ;	B0LPN4 ;

Cellular Localization Sarcoplasmic reticulum membrane ; Multi-pass membrane protein . Membrane ; Multi-pass membrane protein . Sarcoplasmic reticulum . The number of predicted transmembrane domains varies between orthologs, but both N-terminus and C-terminus seem to be cytoplasmic. .

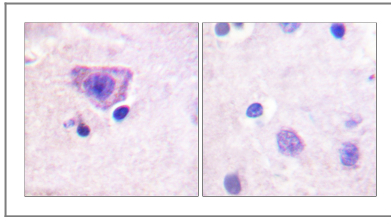
Tissue specificity Detected in heart muscle (at protein level). Heart muscle, brain (cerebellum and hippocampus) and placenta.

Function developmental stage:Expressed in myometrium during pregnancy.,Disease:Defects in RYR2 are the cause of catecholaminergic polymorphic ventricular tachycardia type 1 (CPVT1) [MIM:604772]; also known as stress-induced polymorphic ventricular tachycardia (VTSIP). CPVT1 is an autosomal dominant form of arrhythmogenic disorder characterized by stress-induced, bidirectional ventricular tachycardia that may degenerate into cardiac arrest and cause sudden death.,Disease:Defects in RYR2 are the cause of familial arrhythmogenic right ventricular dysplasia 2 (ARVD2) [MIM:600996]; also known as arrhythmogenic right ventricular cardiomyopathy 2 (ARVC2). ARVD is an autosomal dominant disease characterized by partial degeneration of the myocardium of the right ventricle, electrical instability, and sudden death. It is clinically defined by electrocardiographic and angiographic criteria; pathologic findings, replacement of ventricular myocardium with fatty and fibrous elements, preferentially involve the right ventricular free wall.,Function:Communication between transverse-tubules and sarcoplasmic reticulum. Contraction of cardiac muscle is triggered by release of calcium ions from SR following depolarization of T-tubules.,induction:By TGF-beta.,miscellaneous:Ryanodine is an alkaloid that binds to the Ca-release channel in junctional SR and modulates its activity.,miscellaneous:The calcium release channel activity resides in the C-terminal region while the remaining part of the protein constitutes the 'foot' structure spanning the junctional gap between the SR and the T-tubule. It is possible that the foot structure interacts with the cytoplasmic region of the dihydropyridine receptor.,miscellaneous:The calcium release channel is modulated by calcium ions, magnesium ions, ATP and calmodulin.,online information:Ryanodine receptor entry,online information:RYR2 entry,similarity:Belongs to the ryanodine receptor family.,similarity:Contains 2 EF-hand domains.,similarity:Contains 3 B30.2/SPRY domains.,similarity:Contains 5 MIR domains.,subunit:Homotetramer .,tissue specificity:Heart muscle, brain (cerebellum and hippocampus) and placenta.,

| Validation Data



Enzyme-Linked Immunosorbent Assay (Phospho-ELISA) for Immunogen Phosphopeptide (Phospho-left) and Non-Phosphopeptide (Phospho-right), using RyR2 (Phospho-Ser2808) Antibody



Immunohistochemistry analysis of paraffin-embedded human brain, using RyR2 (Phospho-Ser2808) Antibody. The picture on the right is blocked with the phospho peptide.

Contact information

Orders: order@immunoway.com
 Support: tech@immunoway.com
 Telephone: 877-594-3616 (Toll Free), 408-747-0185
 Website: <http://www.immunoway.com>
 Address: 2200 Ringwood Ave San Jose, CA 95131 USA



Please scan the QR code to access additional product information:
RyR-2 (Phospho Ser2808) Rabbit pAb

For Research Use Only. Not for Use in Diagnostic Procedures.

[Antibody](#) | [ELISA Kits](#) | [Protein](#) | [Reagents](#)