

CRMP-2 (Phospho Thr514) Rabbit pAb

CatalogNo: YP0947 **Orthogonal Validated** 

Key Features

Host Species

- Rabbit

Reactivity

- Human, Mouse, Rat

Applications

- WB, IHC, IF, ELISA

MW

- 65kD (Observed)

Isotype

- IgG

Storage

Storage* -15°C to -25°C/1 year (Do not lower than -25°C)**Formulation** Liquid in PBS containing 50% glycerol, 0.5% BSA and 0.02% sodium azide.

Recommended Dilution Ratios

WB 1:500-1:2000**IHC 1:100-1:300****IF 1:200-1:1000****ELISA 1:5000****Not yet tested in other applications.**

Basic Information

Clonality Polyclonal

Immunogen Information

Immunogen The antiserum was produced against synthesized peptide derived from human DRP-2 around the phosphorylation site of Thr514. AA range: 480-529

Specificity

Phospho-CRMP-2 (T514) Polyclonal Antibody detects endogenous levels of CRMP-2 protein only when phosphorylated at T514. The name of modified sites may be influenced by many factors, such as species (the modified site was not originally found in human samples) and the change of protein sequence (the previous protein sequence is incomplete, and the protein sequence may be prolonged with the development of protein sequencing technology). When naming, we will use the "numbers" in historical reference to keep the sites consistent with the reports. The antibody binds to the following modification sequence (lowercase letters are modification sites):TVtPA

| Target Information

Gene name DPYSL2

Protein Name Dihydropyrimidinase-related protein 2

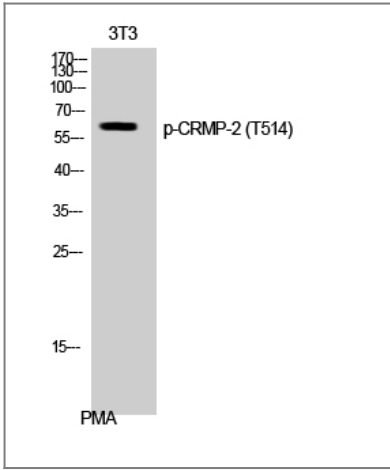
Organism	Gene ID	UniProt ID
Human	1808 ;	Q16555 ;
Mouse	12934 ;	O08553 ;
Rat	25416 ;	P47942 ;

Cellular Localization Cytoplasm, cytosol . Cytoplasm, cytoskeleton . Membrane . Tightly but non-covalently associated with membranes.

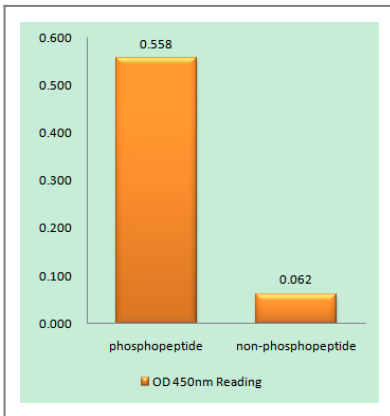
Tissue specificity Ubiquitous.

Function Function:Necessary for signaling by class 3 semaphorins and subsequent remodeling of the cytoskeleton. Plays a role in axon guidance, neuronal growth cone collapse and cell migration.,PTM:3F4, a monoclonal antibody which strongly stains neurofibrillary tangles in Alzheimer disease brains, specifically labels DPYSL2 when phosphorylated on Ser-518, Ser-522 and Thr-509.,similarity:Belongs to the DHOase family. Hydantoinase/dihydropyrimidinase subfamily.,subunit:Homotetramer, and heterotetramer with CRMP1, DPYSL3, DPYSL4 or DPYSL5 (By similarity). Interacts through its C-terminus with the C-terminus of CYFIP1/SRA1. Interacts with HTR4.,tissue specificity:Ubiquitous.,

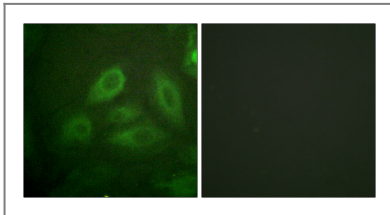
| Validation Data



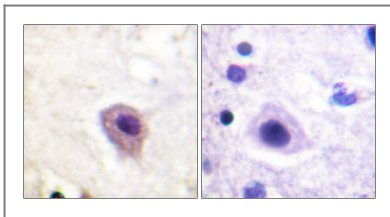
Western Blot analysis of 3T3 cells using Phospho-CRMP-2 (T514) Polyclonal Antibody



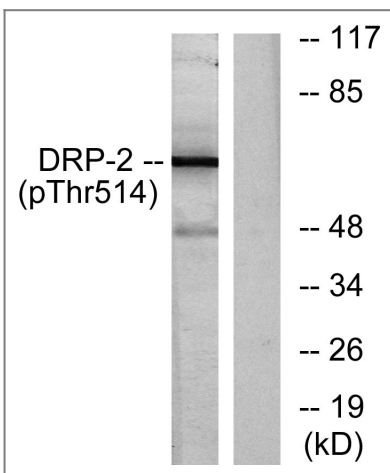
Enzyme-Linked Immunosorbent Assay (Phospho-ELISA) for Immunogen Phosphopeptide (Phospho-left) and Non-Phosphopeptide (Phospho-right), using DRP-2 (Phospho-Thr514) Antibody



Immunofluorescence analysis of HeLa cells, using DRP-2 (Phospho-Thr514) Antibody. The picture on the right is blocked with the phospho peptide.



Immunohistochemistry analysis of paraffin-embedded human brain, using DRP-2 (Phospho-Thr514) Antibody. The picture on the right is blocked with the phospho peptide.



Western blot analysis of lysates from NIH/3T3 cells treated with PMA 125ng/ml 30', using DRP-2 (Phospho-Thr514) Antibody. The lane on the right is blocked with the phospho peptide.

| Contact information

Orders: order@immunoway.com
Support: tech@immunoway.com
Telephone: 877-594-3616 (Toll Free), 408-747-0185
Website: <http://www.immunoway.com>
Address: 2200 Ringwood Ave San Jose, CA 95131 USA



Please scan the QR code to access additional product information:
CRMP-2 (Phospho Thr514) Rabbit pAb

For Research Use Only. Not for Use in Diagnostic Procedures.

[Antibody](#) | [ELISA Kits](#) | [Protein](#) | [Reagents](#)